



Bauh MUDRAN can be considered an intermediary for moments among SOUNDS AND LIGHTS not necessarily a priori, destined to meet. In Anlehnung an die ältere Landschaft von Gilles Clement...

Bauh GARDNER can be considered an intermediary for moments among SOUNDS not necessarily a priori, destined to meet. Die Stadtküche liegt die Analyse und Identifizierung...

Bauh ACHTERT can be considered an intermediary for moments among SPACIAL QUALITIES not necessarily a priori, destined to meet. Die Modulare Komposition von A&T werden zu...



- ENTWURFSSTANDORTE IN UND UM WEIMAR. 1 SOMMERZIT, 2 AUSGERÄUMTE KASERNE, 3 VERKAUFSTONNENALLE, 4 BANDSTADT, 5 RETROWEITE, 6 GÖTTENBANKOPF, 7 AN AMT, 8 ALBROCKEN, 9 Z-WIESE, 10 ALTE KASERNE, 11 COLA WÄLDCHEN, 12 WEGE IN DER ULM, 13 ALTE GARTENSTREIPE.

- GAST BETREUUNG: Martin Kohlstedt, Martin Schmidt, Laura Schütze. PROFESSUR: Bauformenlehre, Darstellungsmethodik. FAKULTÄT: Architektur und Urbanistik.



Autorin: Frieda Fischer, Martin Schmidt, Laura Schütze. Professur: Bauformenlehre, Darstellungsmethodik. Fakultät: Architektur und Urbanistik.

Bauh MUDRAN can be considered an intermediary for moments among SOUNDS AND LIGHTS not necessarily a priori, destined to meet.



Bauh MUDRAN can be considered an intermediary for moments among SOUNDS AND LIGHTS not necessarily a priori, destined to meet.

Bauh GARDNER can be considered an intermediary for moments among SOUNDS not necessarily a priori, destined to meet.

Bauh ACHTERT can be considered an intermediary for moments among SPACIAL QUALITIES not necessarily a priori, destined to meet.



- ENTWURFSSTANDORTE IN UND UM WEIMAR. 1 SOMMERZIT, 2 AUSGERÄUMTE KASERNE, 3 VERKAUFSTONNENALLE, 4 BANDSTADT, 5 RETROWEITE, 6 GÖTTENBANKOPF, 7 AN AMT, 8 ALBROCKEN, 9 Z-WIESE, 10 ALTE KASERNE, 11 COLA WÄLDCHEN, 12 WEGE IN DER ULM, 13 ALTE GARTENSTREIPE.

- GAST BETREUUNG: Martin Kohlstedt, Martin Schmidt, Laura Schütze. PROFESSUR: Bauformenlehre, Darstellungsmethodik. FAKULTÄT: Architektur und Urbanistik.



Autorin: Frieda Fischer, Martin Schmidt, Laura Schütze. Professur: Bauformenlehre, Darstellungsmethodik. Fakultät: Architektur und Urbanistik.

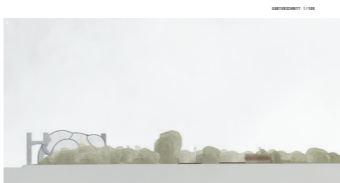
Bauh MUDRAN can be considered an intermediary for moments among SOUNDS AND LIGHTS not necessarily a priori, destined to meet.



Bauh MUDRAN can be considered an intermediary for moments among SOUNDS AND LIGHTS not necessarily a priori, destined to meet.

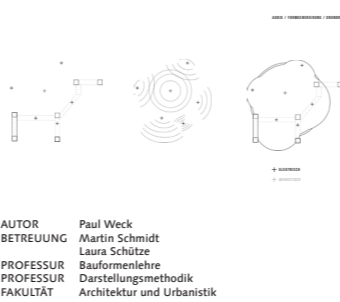
Bauh GARDNER can be considered an intermediary for moments among SOUNDS not necessarily a priori, destined to meet.

Bauh ACHTERT can be considered an intermediary for moments among SPACIAL QUALITIES not necessarily a priori, destined to meet.



- ENTWURFSSTANDORTE IN UND UM WEIMAR. 1 SOMMERZIT, 2 AUSGERÄUMTE KASERNE, 3 VERKAUFSTONNENALLE, 4 BANDSTADT, 5 RETROWEITE, 6 GÖTTENBANKOPF, 7 AN AMT, 8 ALBROCKEN, 9 Z-WIESE, 10 ALTE KASERNE, 11 COLA WÄLDCHEN, 12 WEGE IN DER ULM, 13 ALTE GARTENSTREIPE.

- GAST BETREUUNG: Martin Kohlstedt, Martin Schmidt, Laura Schütze. PROFESSUR: Bauformenlehre, Darstellungsmethodik. FAKULTÄT: Architektur und Urbanistik.



Autorin: Frieda Fischer, Martin Schmidt, Laura Schütze. Professur: Bauformenlehre, Darstellungsmethodik. Fakultät: Architektur und Urbanistik.

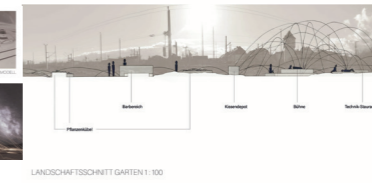
Bauh MUDRAN can be considered an intermediary for moments among SOUNDS AND LIGHTS not necessarily a priori, destined to meet.



Bauh MUDRAN can be considered an intermediary for moments among SOUNDS AND LIGHTS not necessarily a priori, destined to meet.

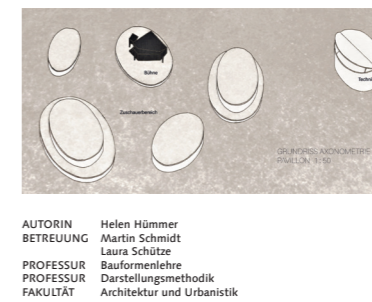
Bauh GARDNER can be considered an intermediary for moments among SOUNDS not necessarily a priori, destined to meet.

Bauh ACHTERT can be considered an intermediary for moments among SPACIAL QUALITIES not necessarily a priori, destined to meet.



- ENTWURFSSTANDORTE IN UND UM WEIMAR. 1 SOMMERZIT, 2 AUSGERÄUMTE KASERNE, 3 VERKAUFSTONNENALLE, 4 BANDSTADT, 5 RETROWEITE, 6 GÖTTENBANKOPF, 7 AN AMT, 8 ALBROCKEN, 9 Z-WIESE, 10 ALTE KASERNE, 11 COLA WÄLDCHEN, 12 WEGE IN DER ULM, 13 ALTE GARTENSTREIPE.

- GAST BETREUUNG: Martin Kohlstedt, Martin Schmidt, Laura Schütze. PROFESSUR: Bauformenlehre, Darstellungsmethodik. FAKULTÄT: Architektur und Urbanistik.



Autorin: Frieda Fischer, Martin Schmidt, Laura Schütze. Professur: Bauformenlehre, Darstellungsmethodik. Fakultät: Architektur und Urbanistik.

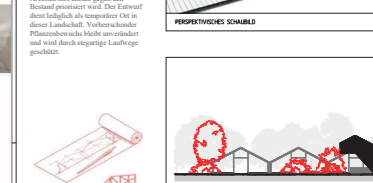
Bauh MUDRAN can be considered an intermediary for moments among SOUNDS AND LIGHTS not necessarily a priori, destined to meet.



Bauh MUDRAN can be considered an intermediary for moments among SOUNDS AND LIGHTS not necessarily a priori, destined to meet.

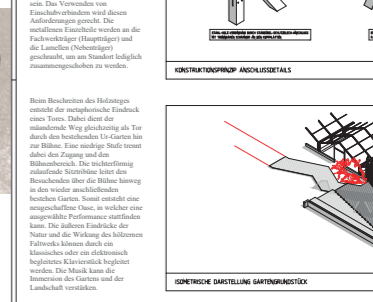
Bauh GARDNER can be considered an intermediary for moments among SOUNDS not necessarily a priori, destined to meet.

Bauh ACHTERT can be considered an intermediary for moments among SPACIAL QUALITIES not necessarily a priori, destined to meet.



- ENTWURFSSTANDORTE IN UND UM WEIMAR. 1 SOMMERZIT, 2 AUSGERÄUMTE KASERNE, 3 VERKAUFSTONNENALLE, 4 BANDSTADT, 5 RETROWEITE, 6 GÖTTENBANKOPF, 7 AN AMT, 8 ALBROCKEN, 9 Z-WIESE, 10 ALTE KASERNE, 11 COLA WÄLDCHEN, 12 WEGE IN DER ULM, 13 ALTE GARTENSTREIPE.

- GAST BETREUUNG: Martin Kohlstedt, Martin Schmidt, Laura Schütze. PROFESSUR: Bauformenlehre, Darstellungsmethodik. FAKULTÄT: Architektur und Urbanistik.



Autorin: Frieda Fischer, Martin Schmidt, Laura Schütze. Professur: Bauformenlehre, Darstellungsmethodik. Fakultät: Architektur und Urbanistik.

Bauh MUDRAN can be considered an intermediary for moments among SOUNDS AND LIGHTS not necessarily a priori, destined to meet.



Bauh MUDRAN can be considered an intermediary for moments among SOUNDS AND LIGHTS not necessarily a priori, destined to meet.

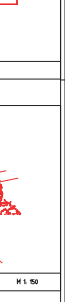
Bauh GARDNER can be considered an intermediary for moments among SOUNDS not necessarily a priori, destined to meet.

Bauh ACHTERT can be considered an intermediary for moments among SPACIAL QUALITIES not necessarily a priori, destined to meet.



- ENTWURFSSTANDORTE IN UND UM WEIMAR. 1 SOMMERZIT, 2 AUSGERÄUMTE KASERNE, 3 VERKAUFSTONNENALLE, 4 BANDSTADT, 5 RETROWEITE, 6 GÖTTENBANKOPF, 7 AN AMT, 8 ALBROCKEN, 9 Z-WIESE, 10 ALTE KASERNE, 11 COLA WÄLDCHEN, 12 WEGE IN DER ULM, 13 ALTE GARTENSTREIPE.

- GAST BETREUUNG: Martin Kohlstedt, Martin Schmidt, Laura Schütze. PROFESSUR: Bauformenlehre, Darstellungsmethodik. FAKULTÄT: Architektur und Urbanistik.



Autorin: Frieda Fischer, Martin Schmidt, Laura Schütze. Professur: Bauformenlehre, Darstellungsmethodik. Fakultät: Architektur und Urbanistik.

Bauh MUDRAN can be considered an intermediary for moments among SOUNDS AND LIGHTS not necessarily a priori, destined to meet.