

*«There are two Helsinkis, thy city that we all know, and another city underground.»*

---







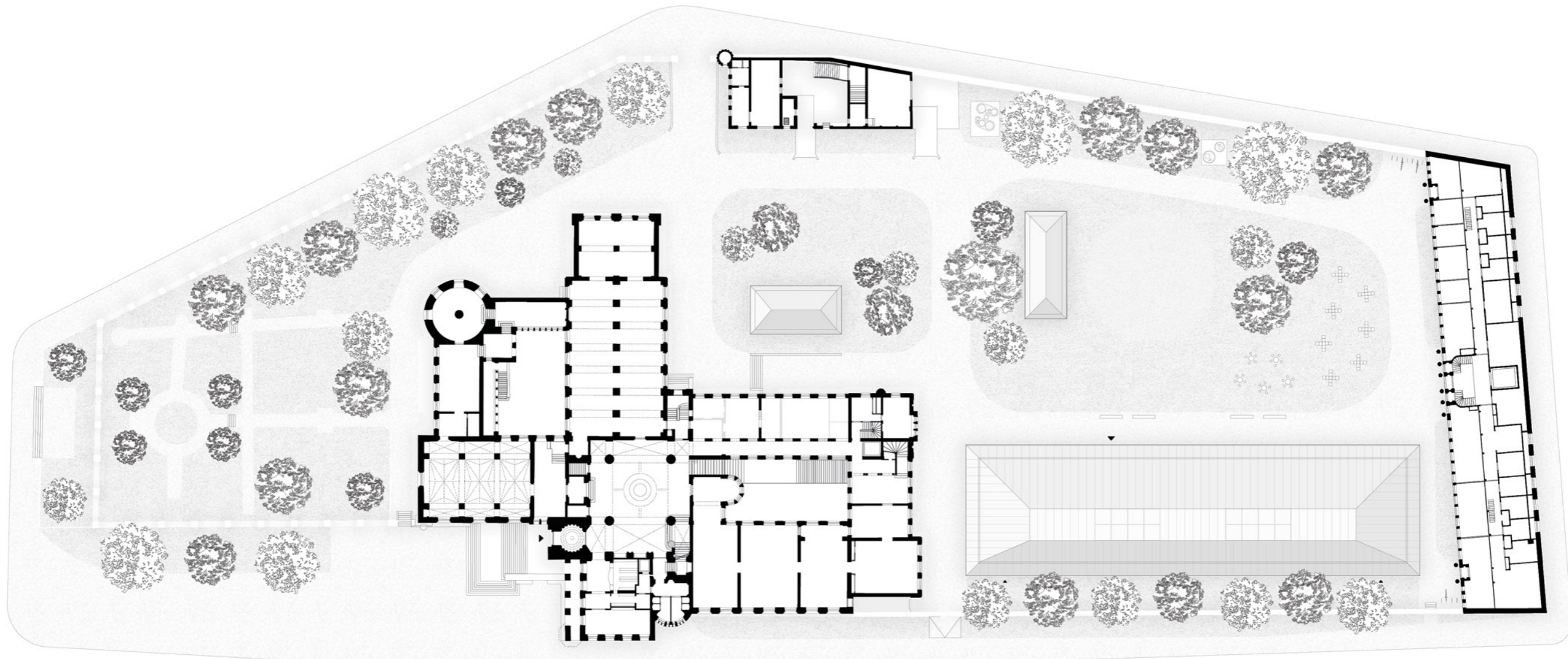


Situation

---

*Salah*

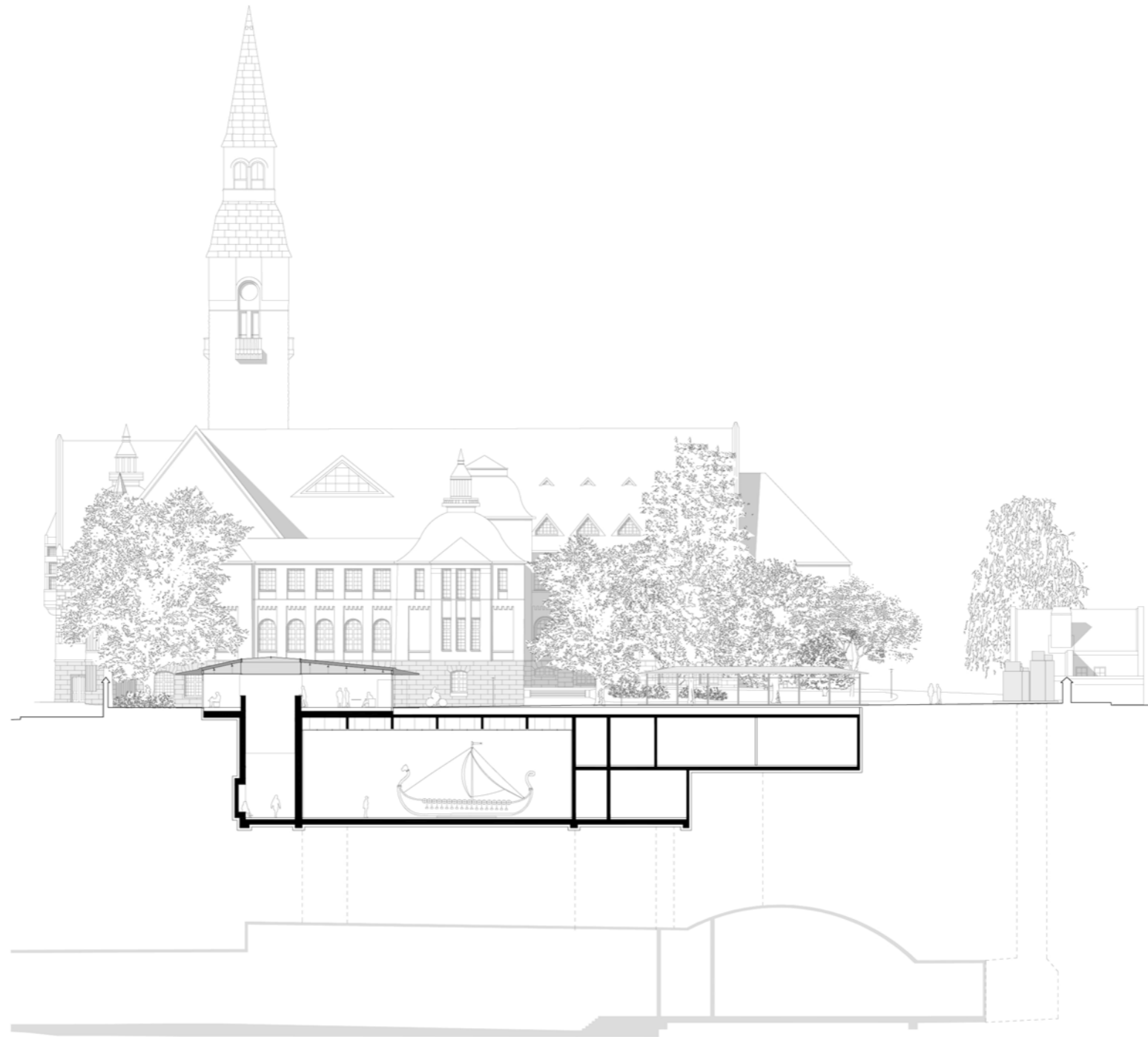




Upper Groundfloor

*Salah*

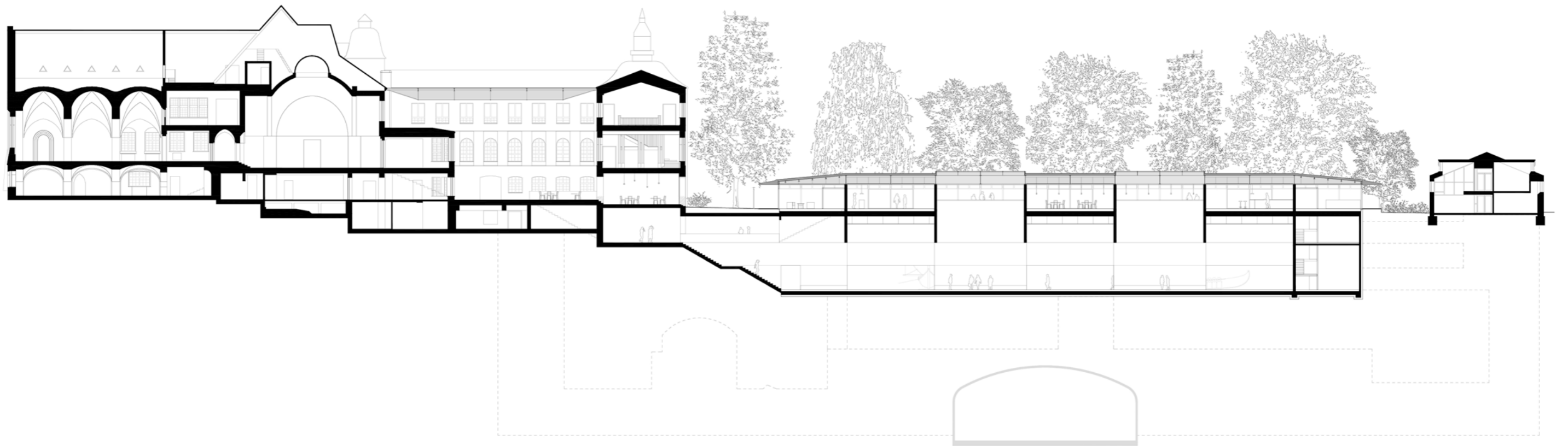




Cross Section I

*Salah*

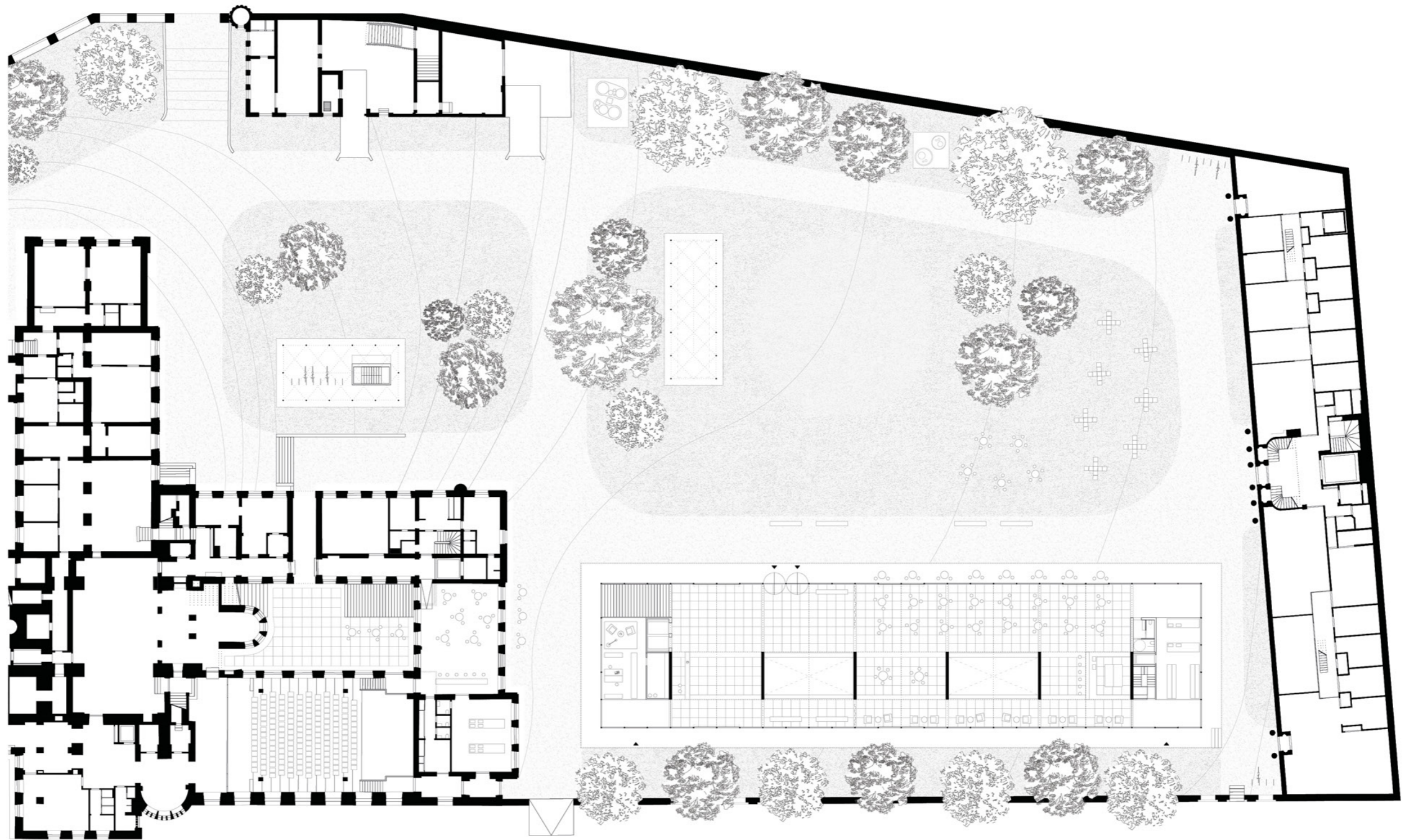




Longitudinal Section I

*Salah*





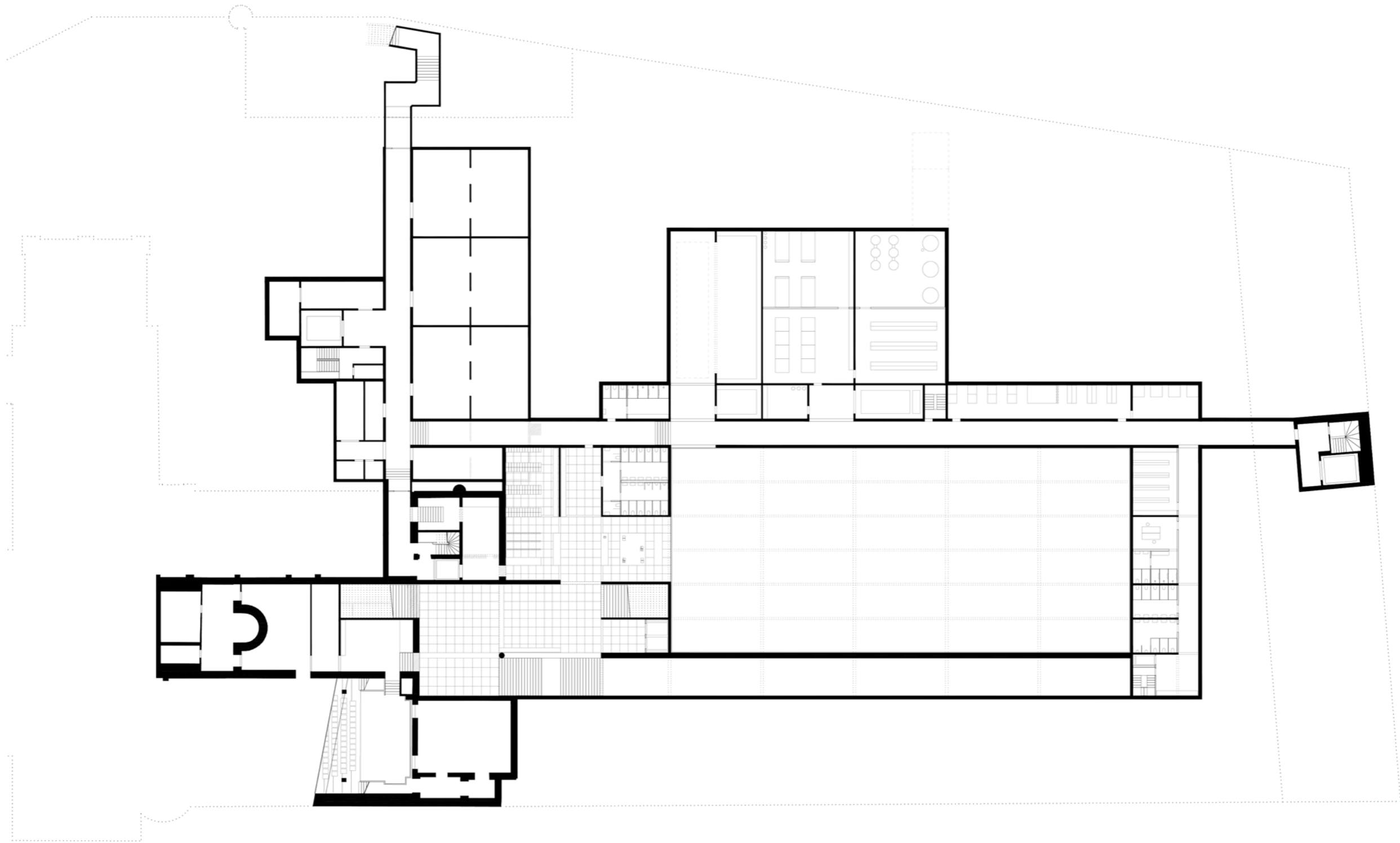
Groundfloor

*Salah*





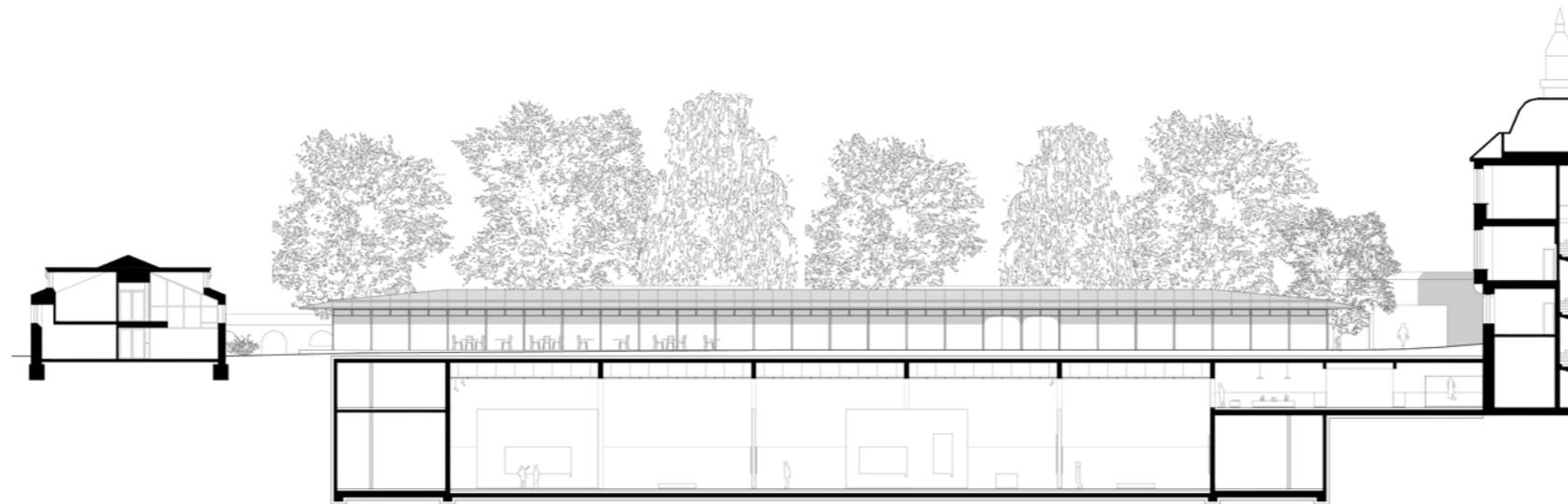




First Underground Level

*Salah*





Longitudinal Section II

*Salah*













CLOAKROOM

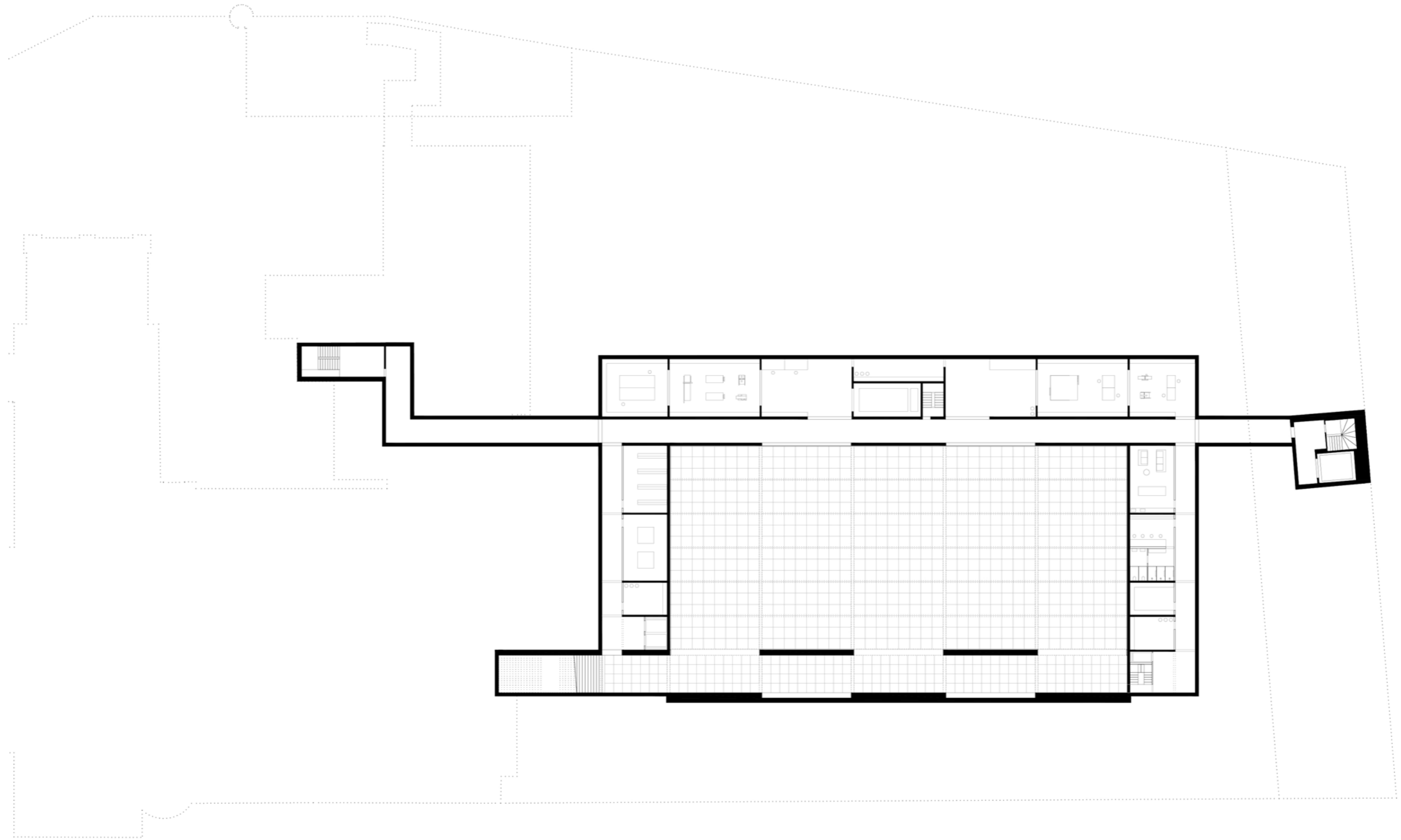
SHOP

RESTAURANT

LIFT

EXHIBITION

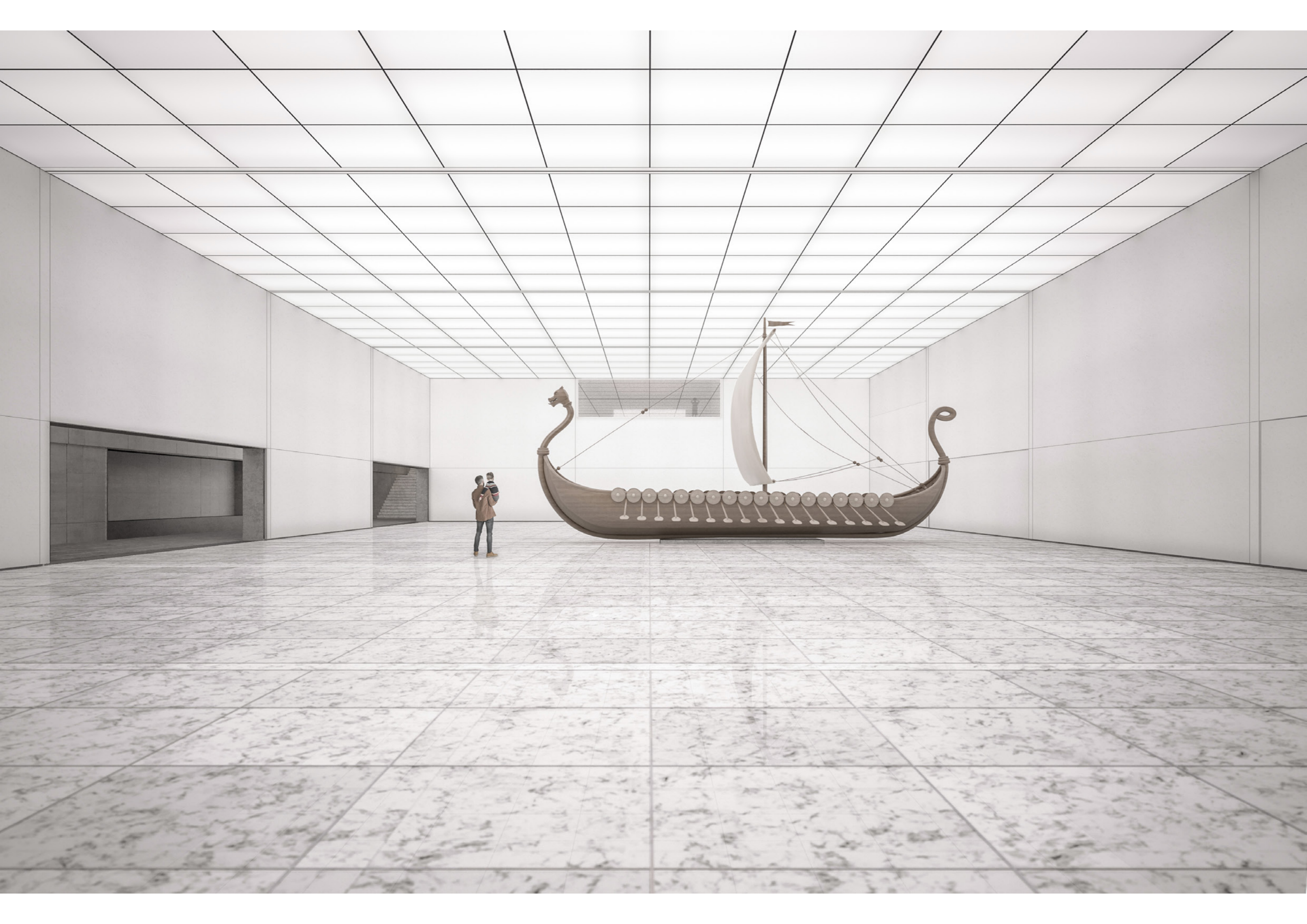




Second Underground Level

*Salah*









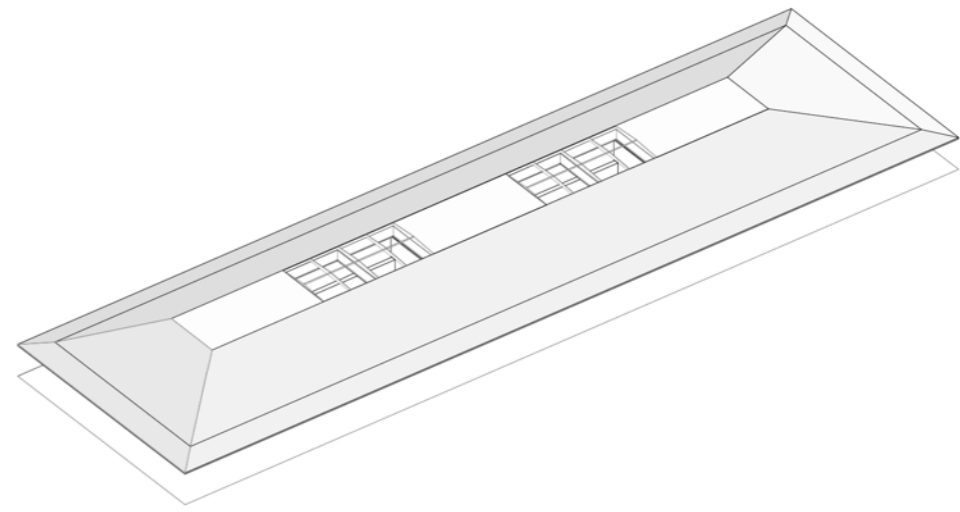
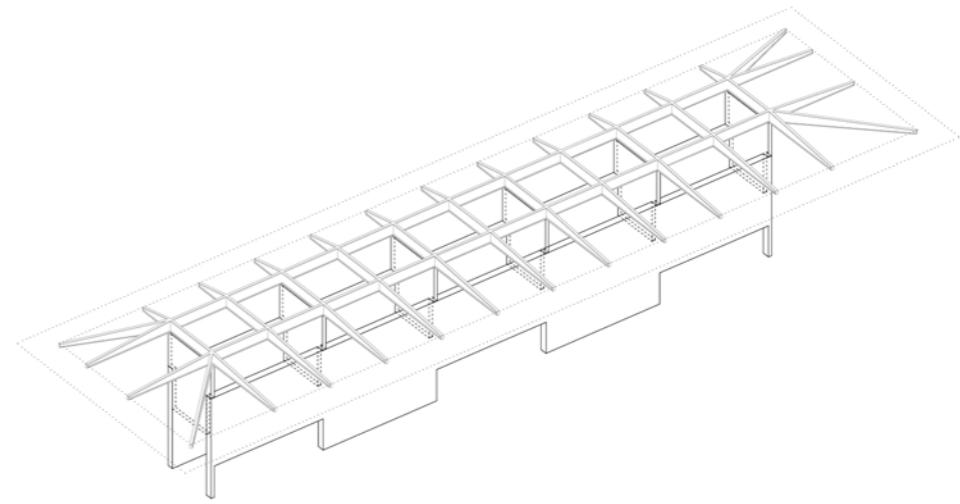
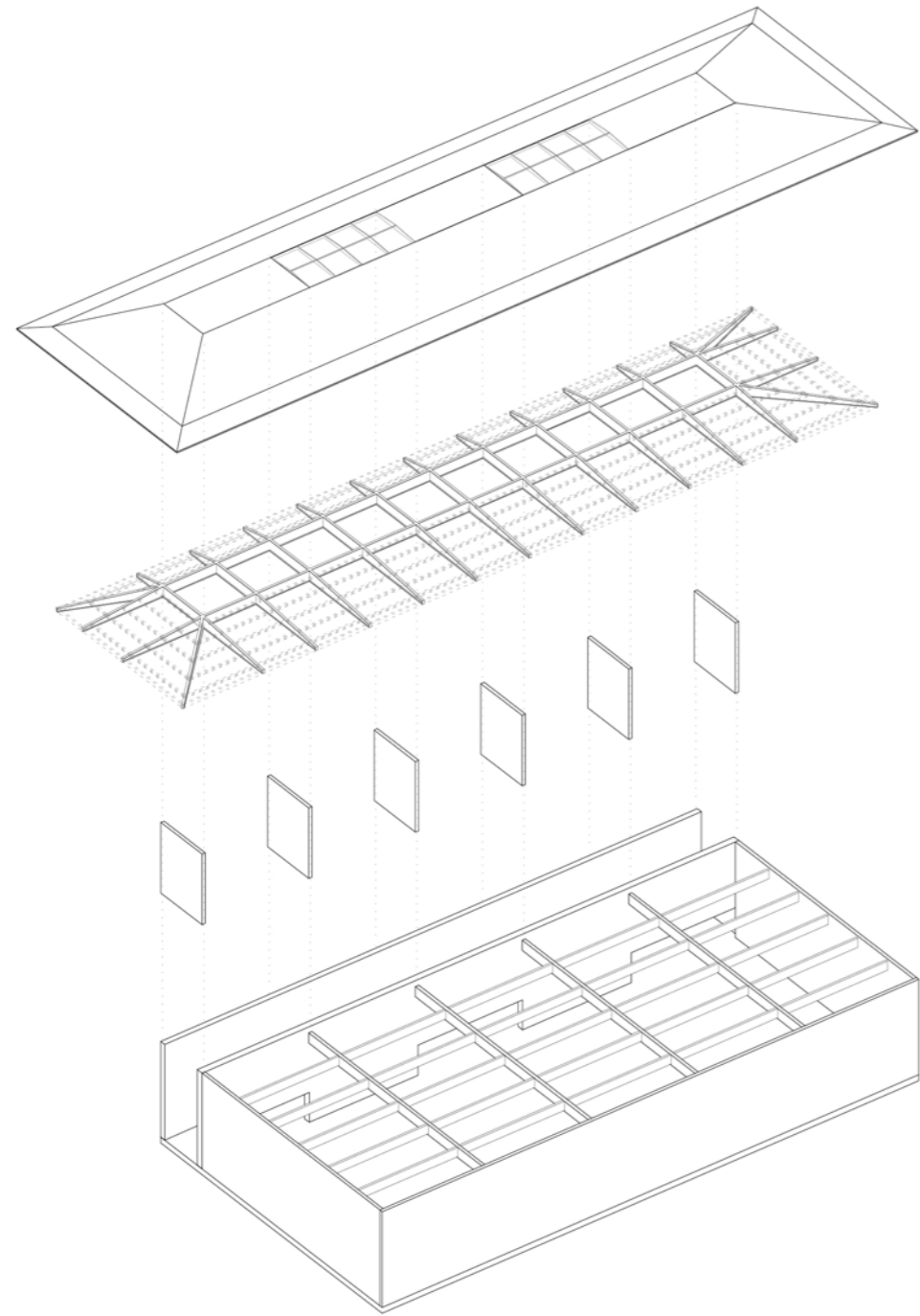










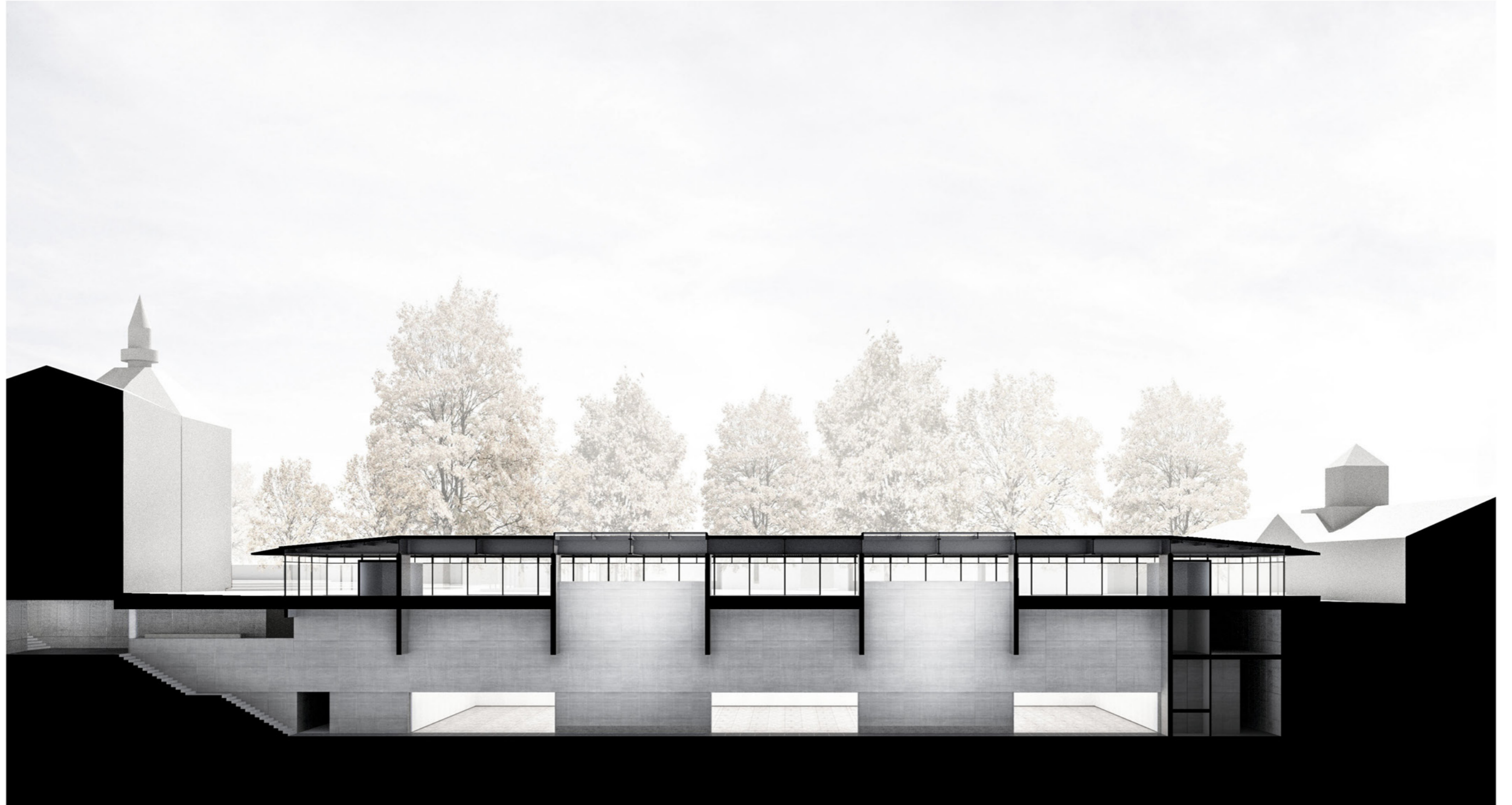


Structure

---

*Salah*

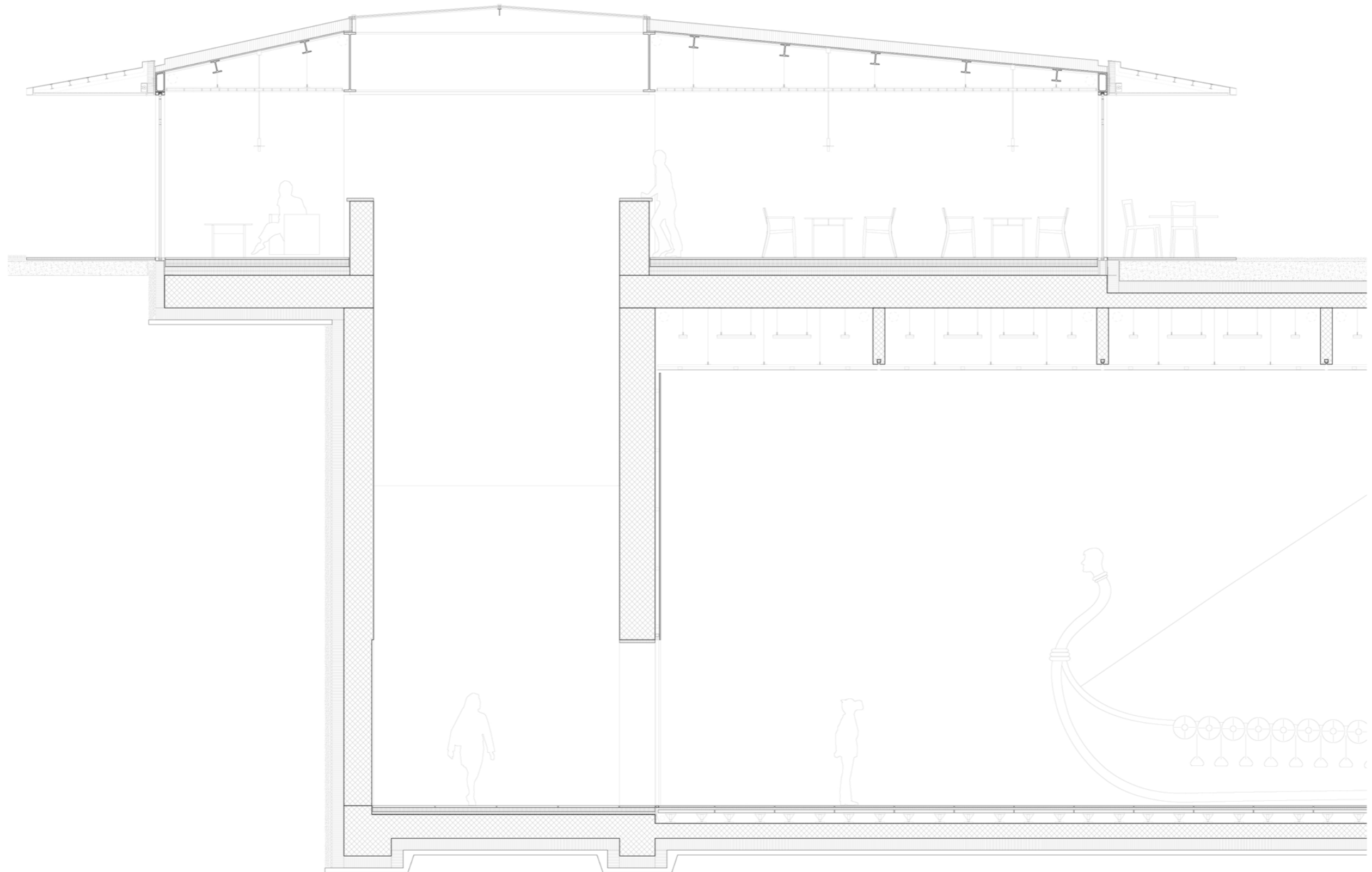




Perspective Section

*Salah*

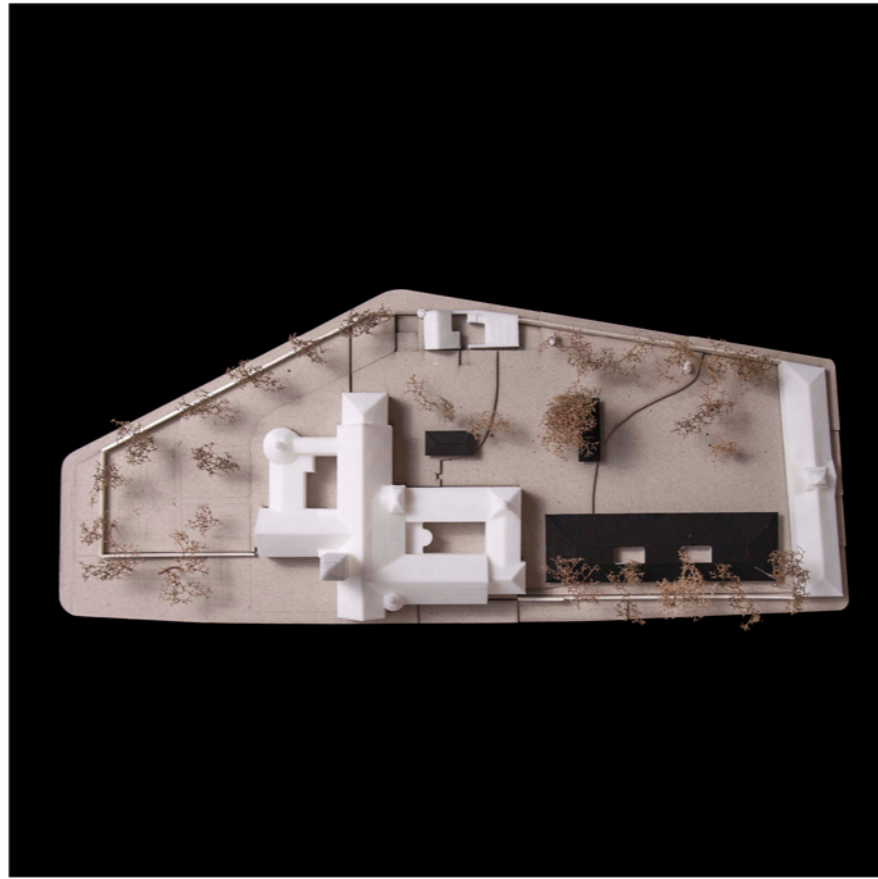




Detail

*Salah*





Model

---

*Salah*