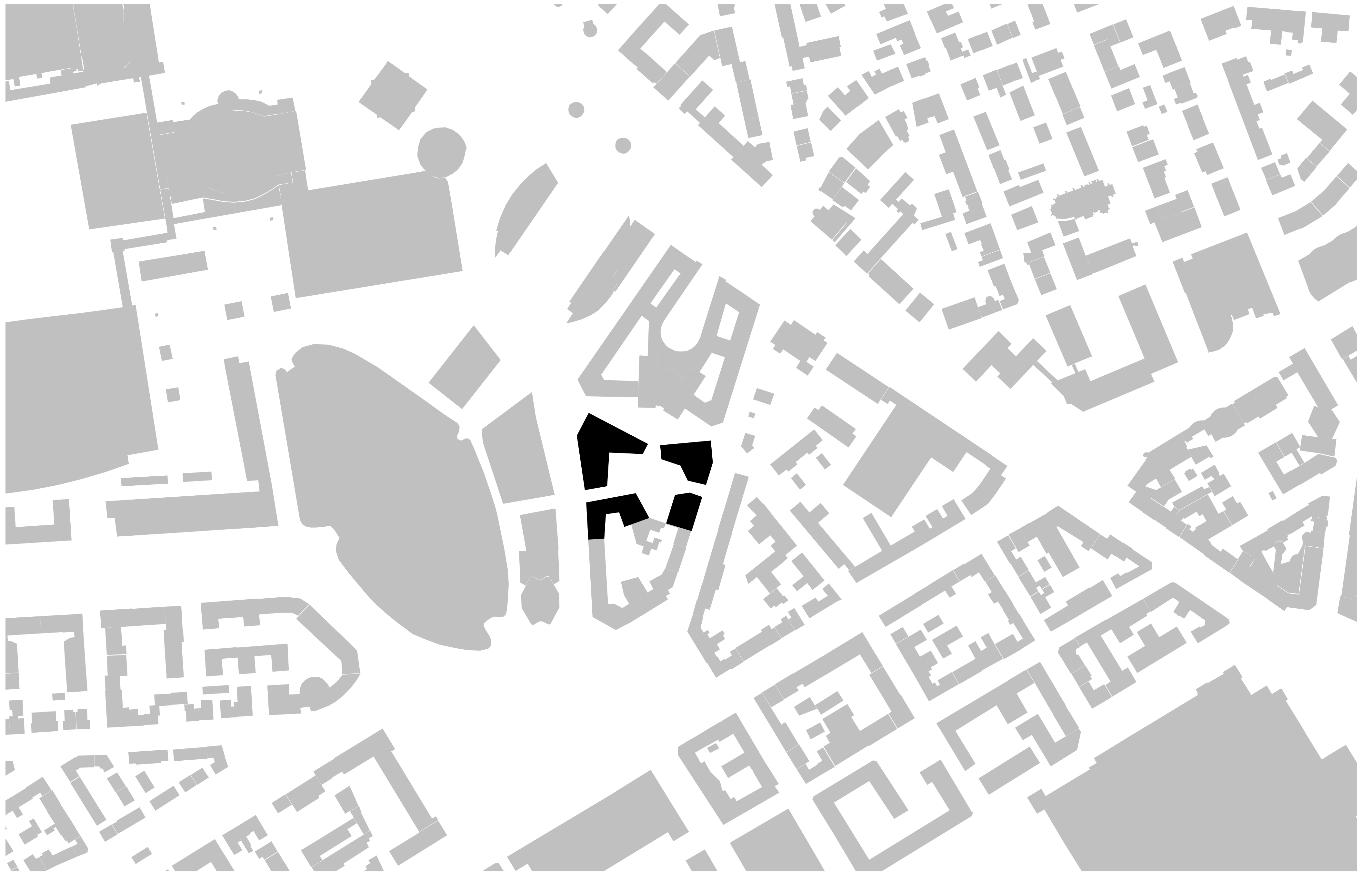
A photograph of a physical architectural model of a building. The building is tall and rectangular, constructed from a grid of thin, light-brown wooden or cardboard strips. The grid forms a series of small, square openings. The building is set on a light-colored, flat surface. To the left of the building is a large, solid, light-brown rectangular block. In the foreground, there are several small, thin, brown, branch-like structures that look like miniature trees or shrubs. The background is a plain, light blue sky.

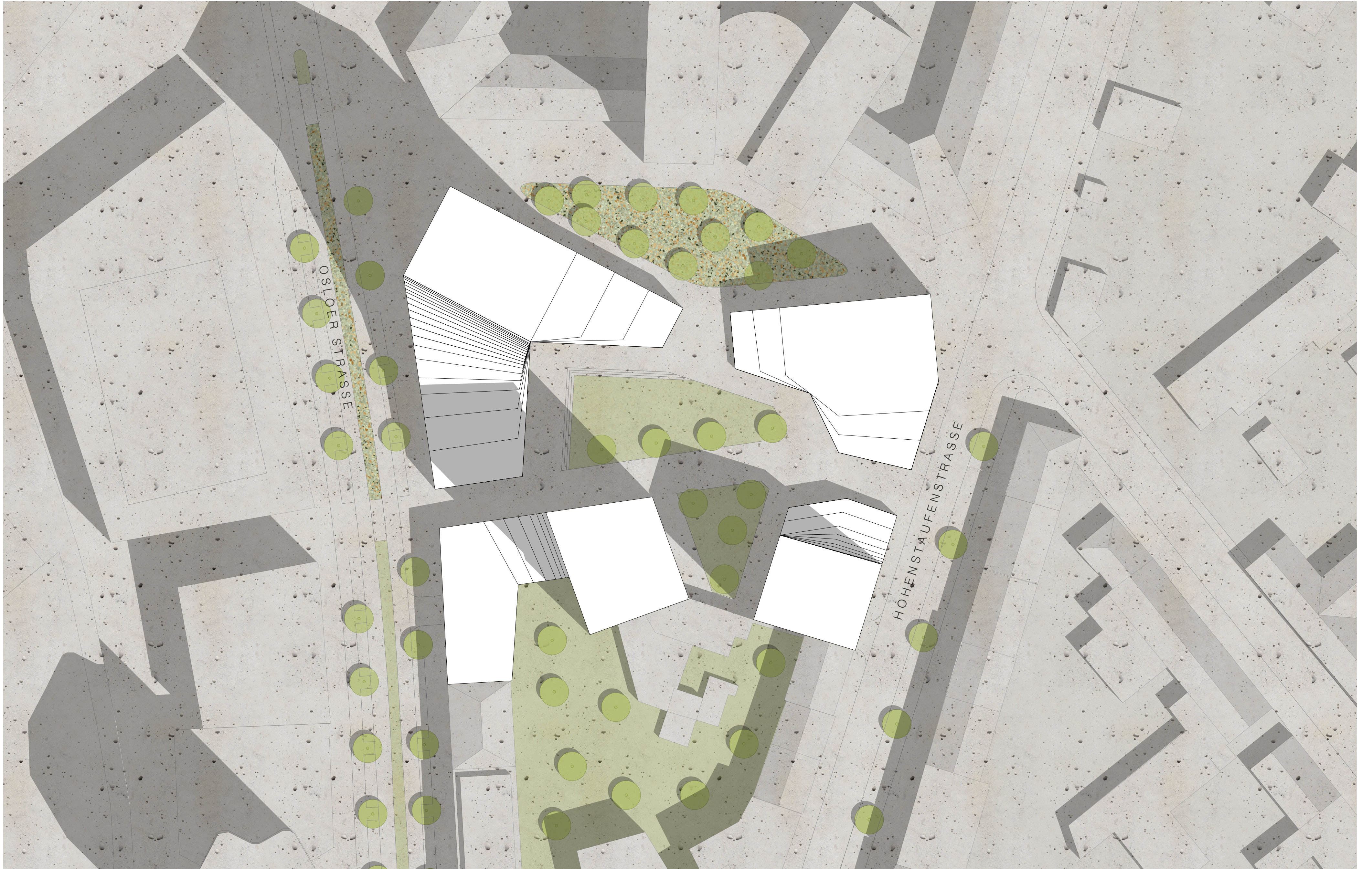
THE 3½

EGORENKOVA
LEBOUCHER
STOUGARD



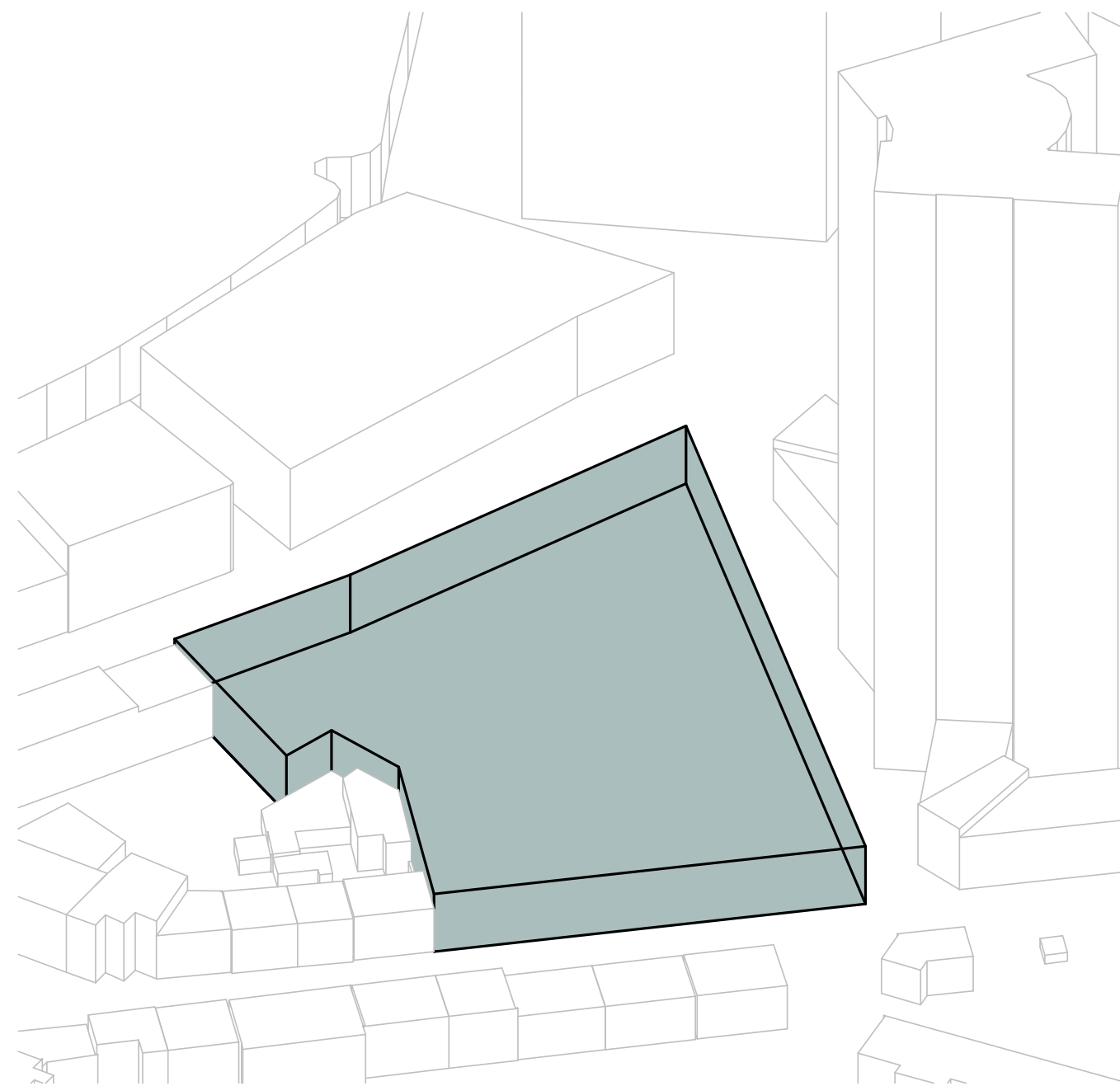
SCHWARZPLAN / M 1:2000



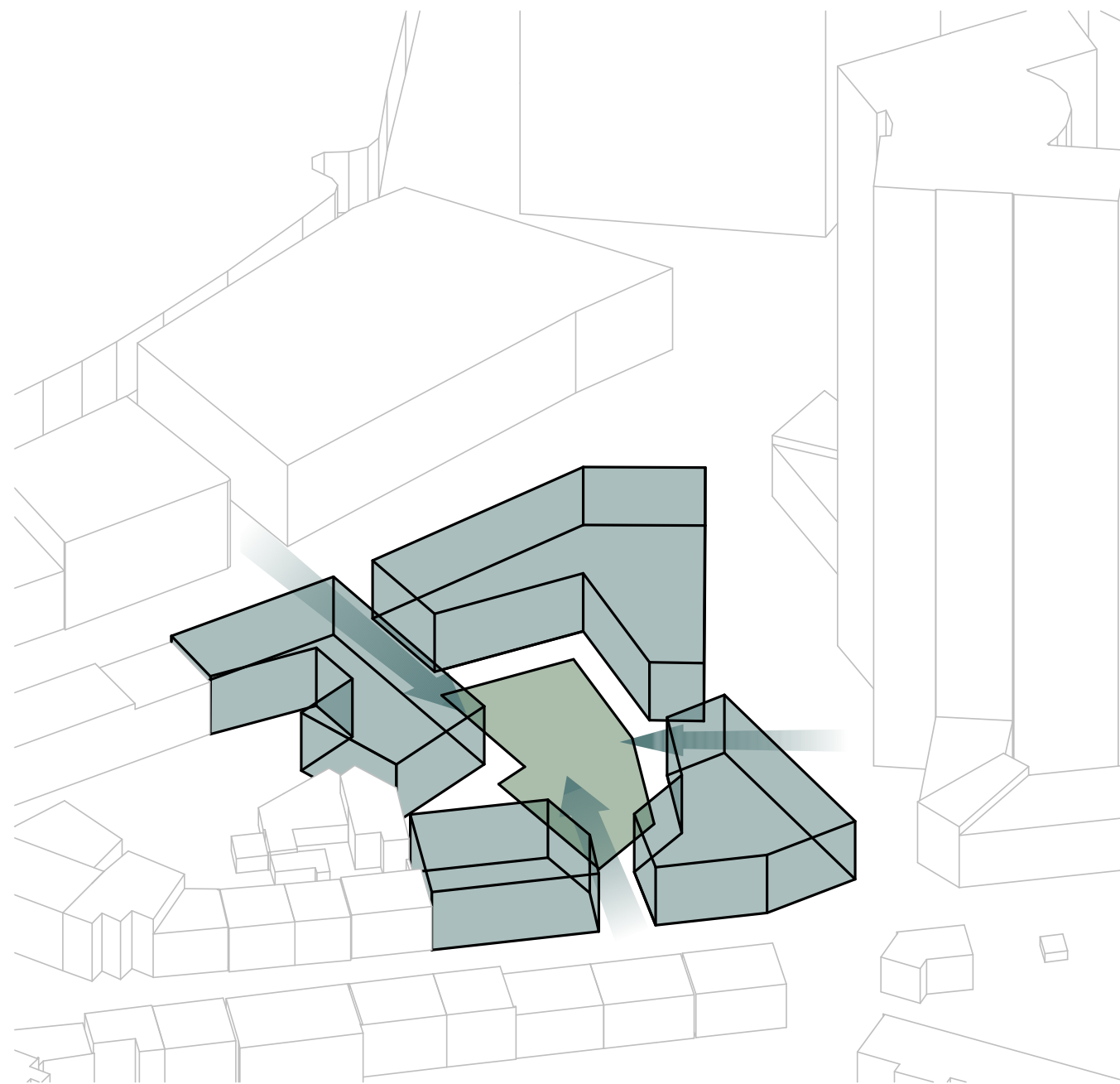


0 25 50

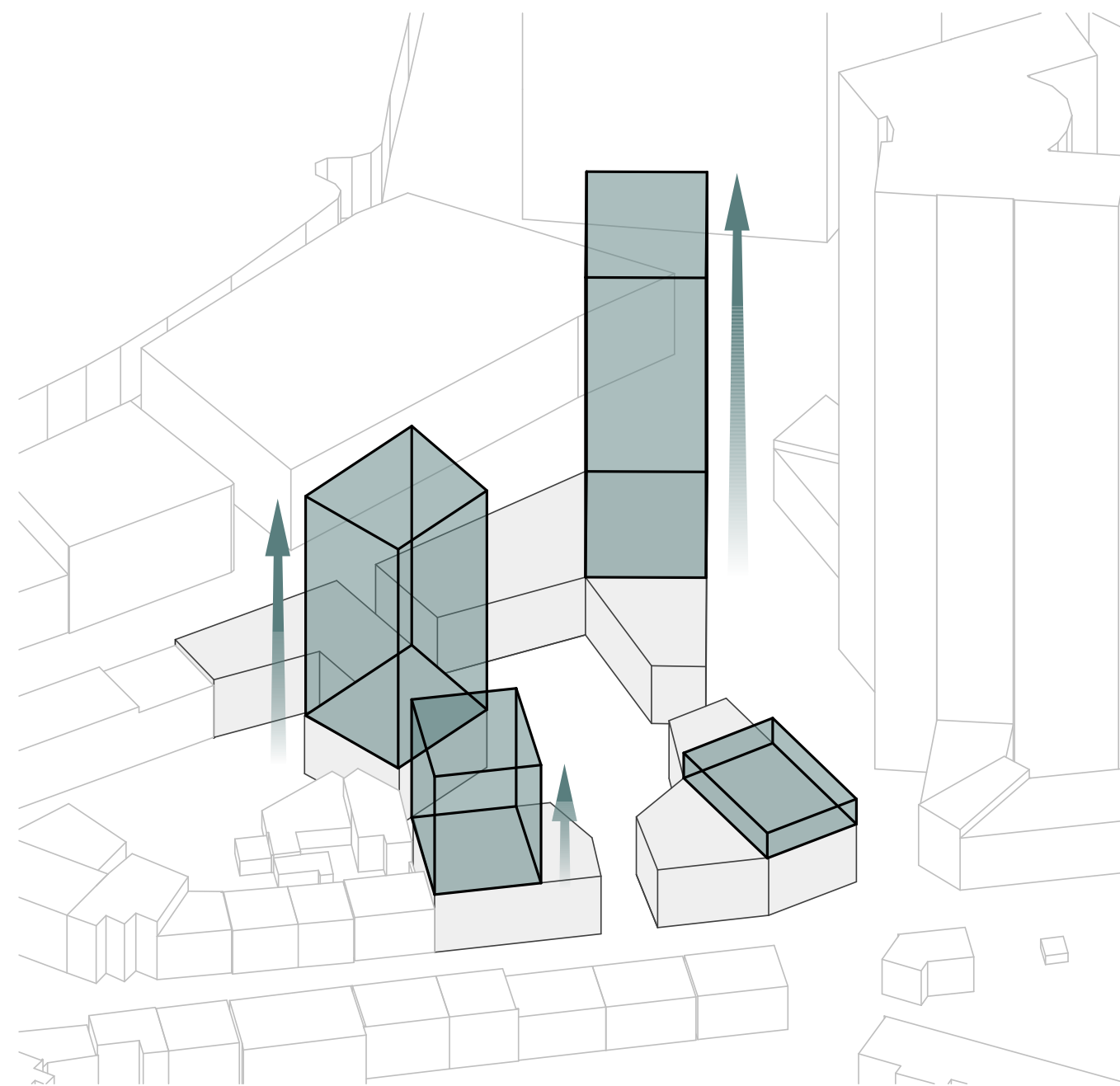
LAGEPLAN / M 1:500



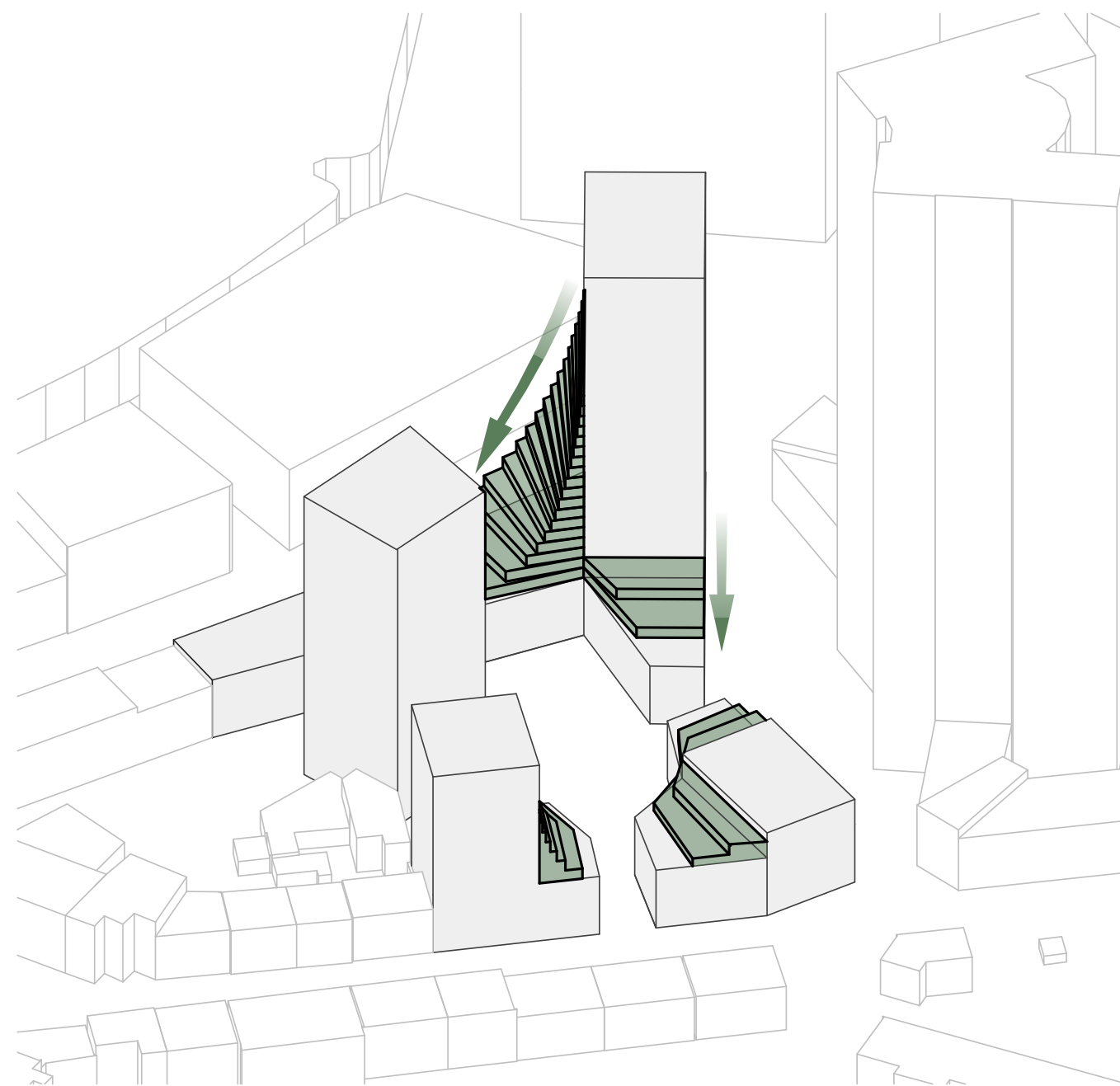
STÄDTEBAULICHES KONZEPT



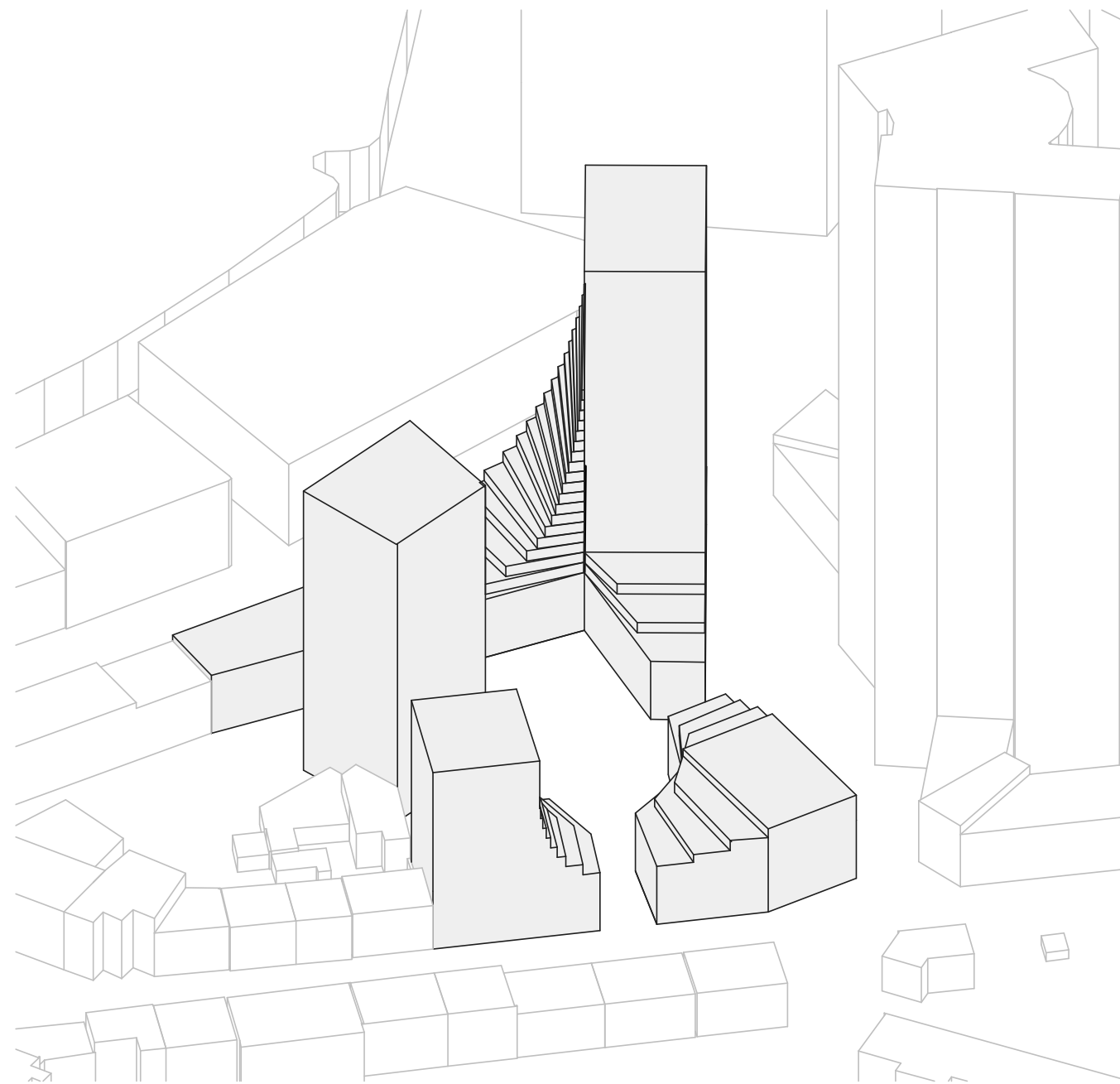
STÄDTEBAULICHES KONZEPT



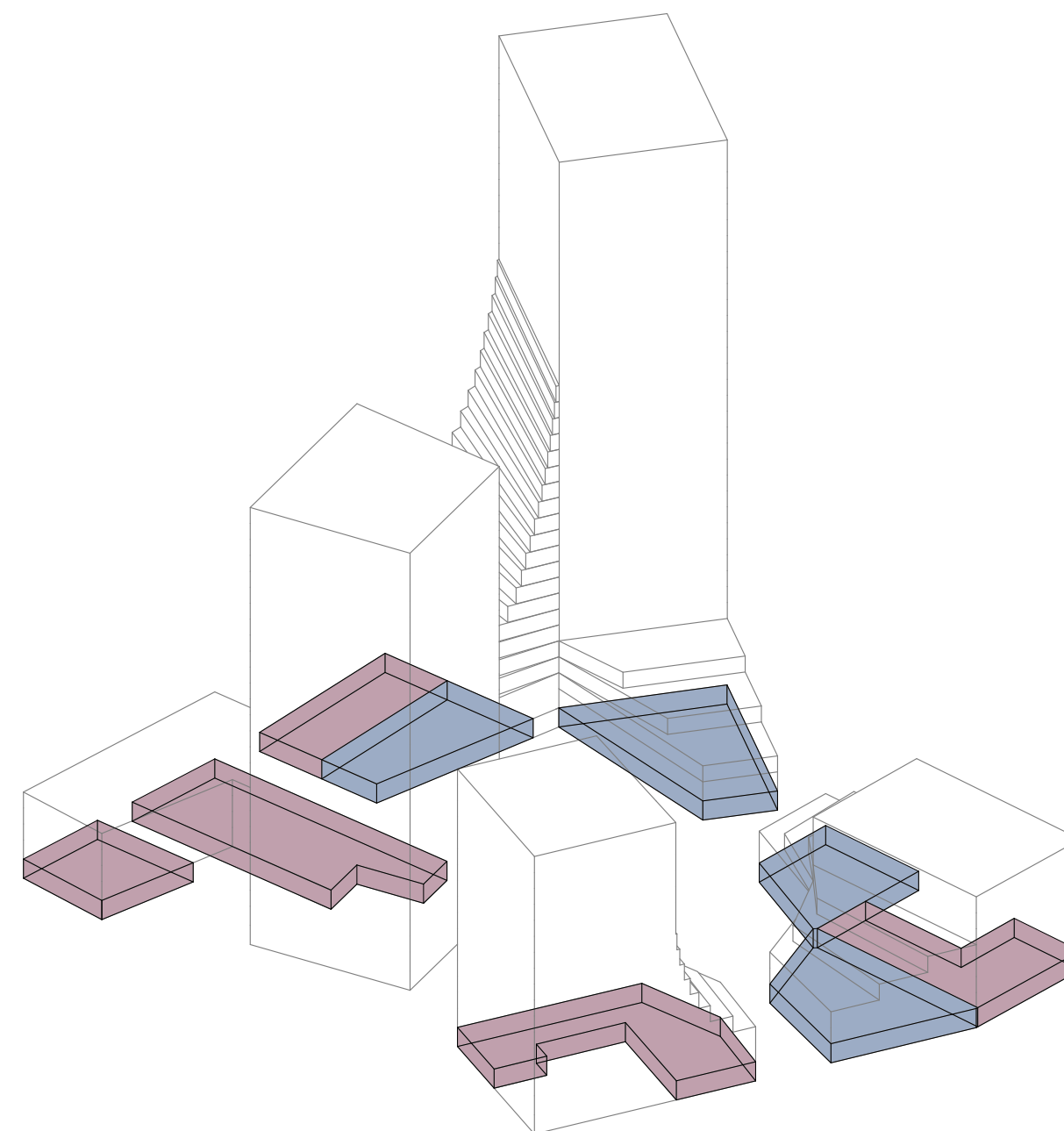
STÄDTEBAULICHES KONZEPT



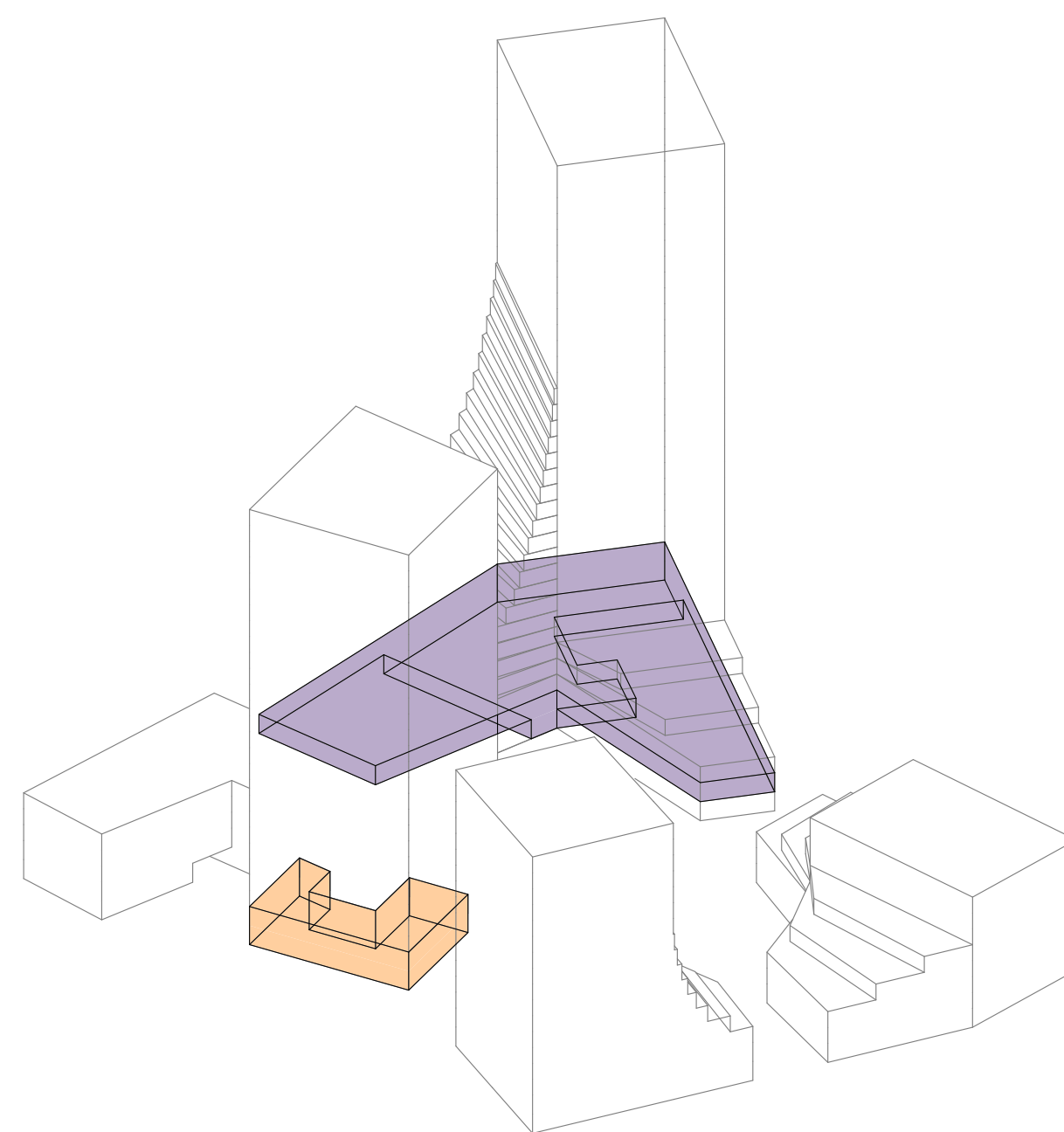
STÄDTEBAULICHES KONZEPT



STÄDTEBAULICHES KONZEPT



NUTZUNGSKONZEPT

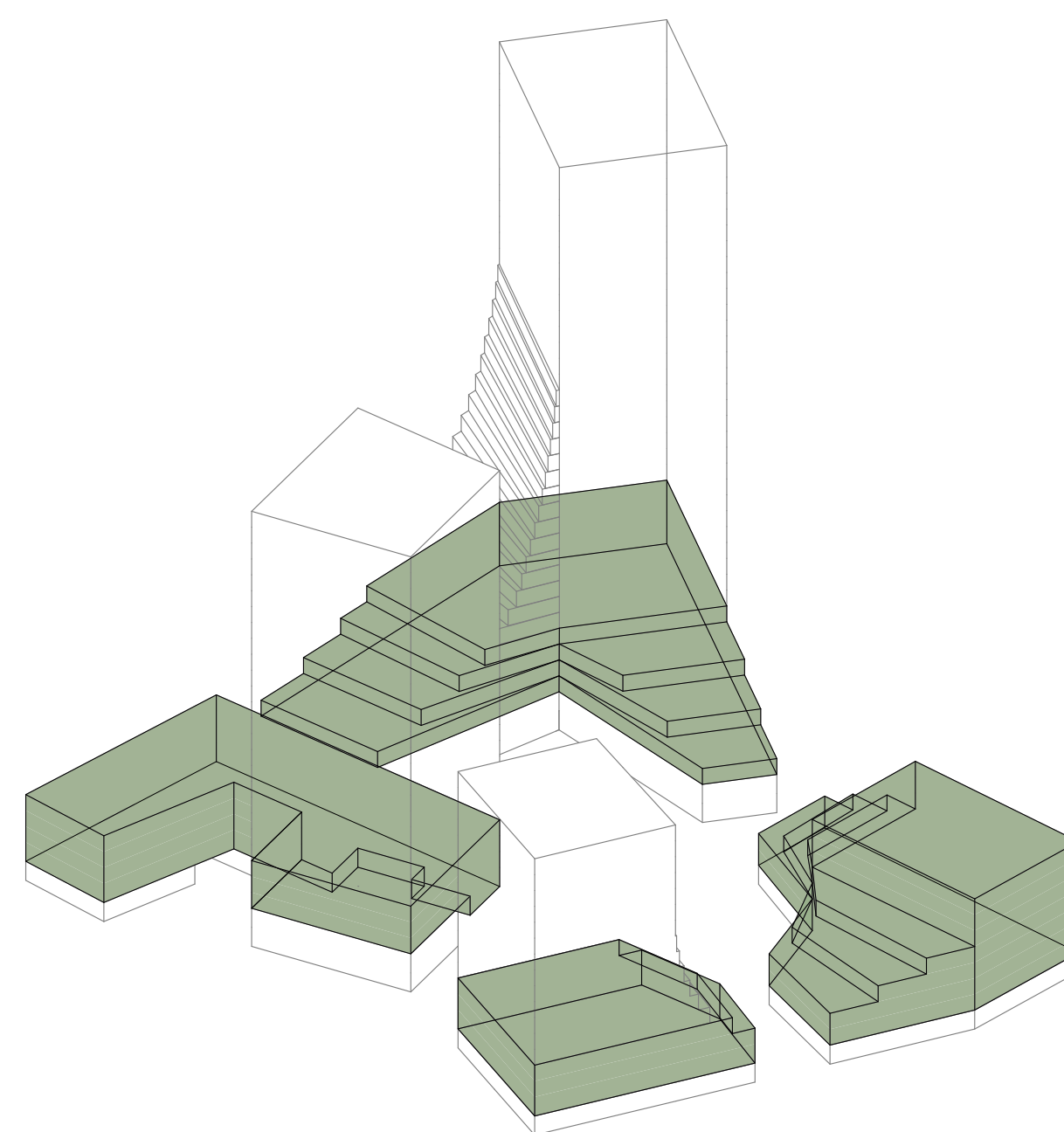


Kita



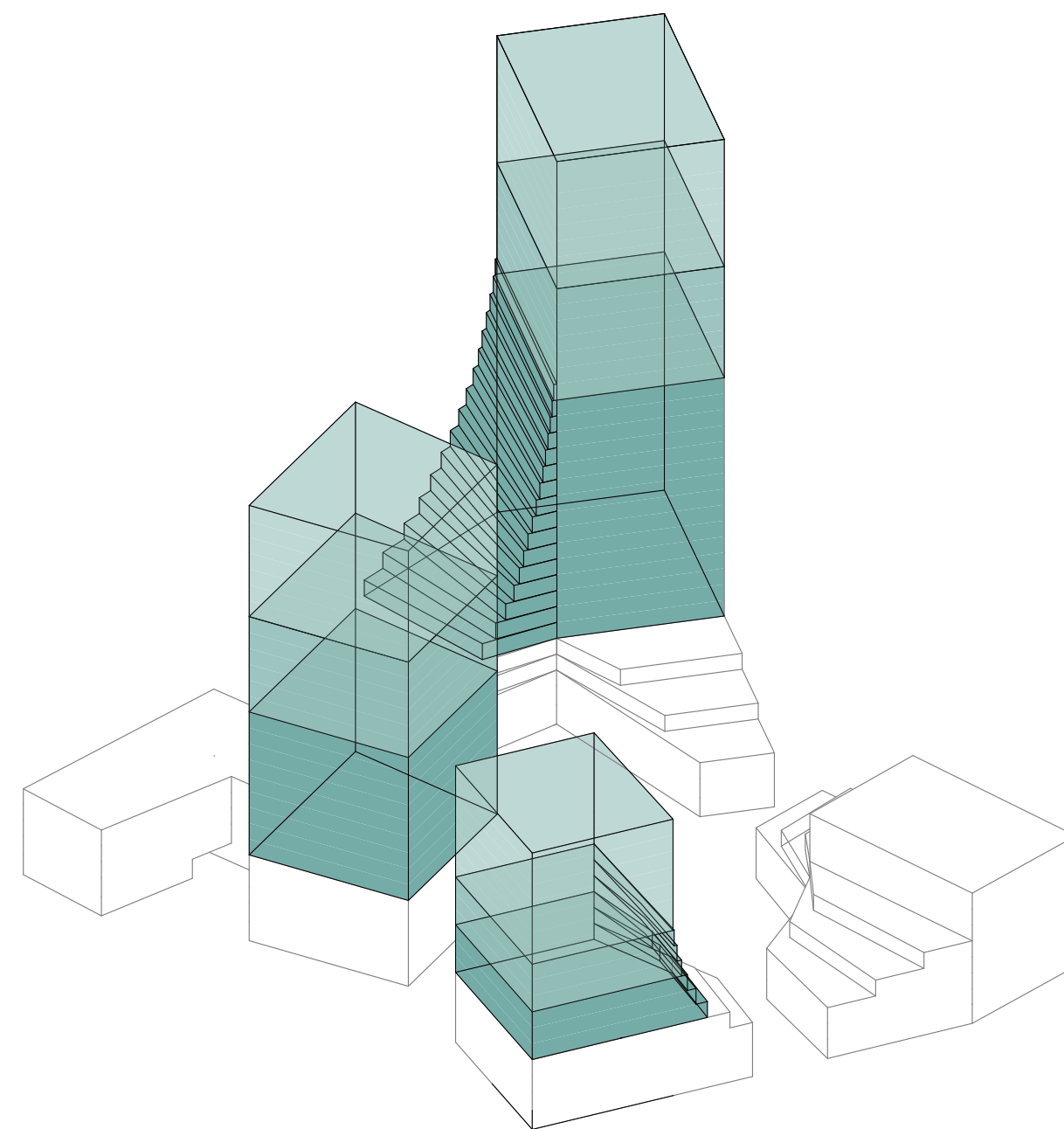
Bibliothek

NUTZUNGSKONZEPT



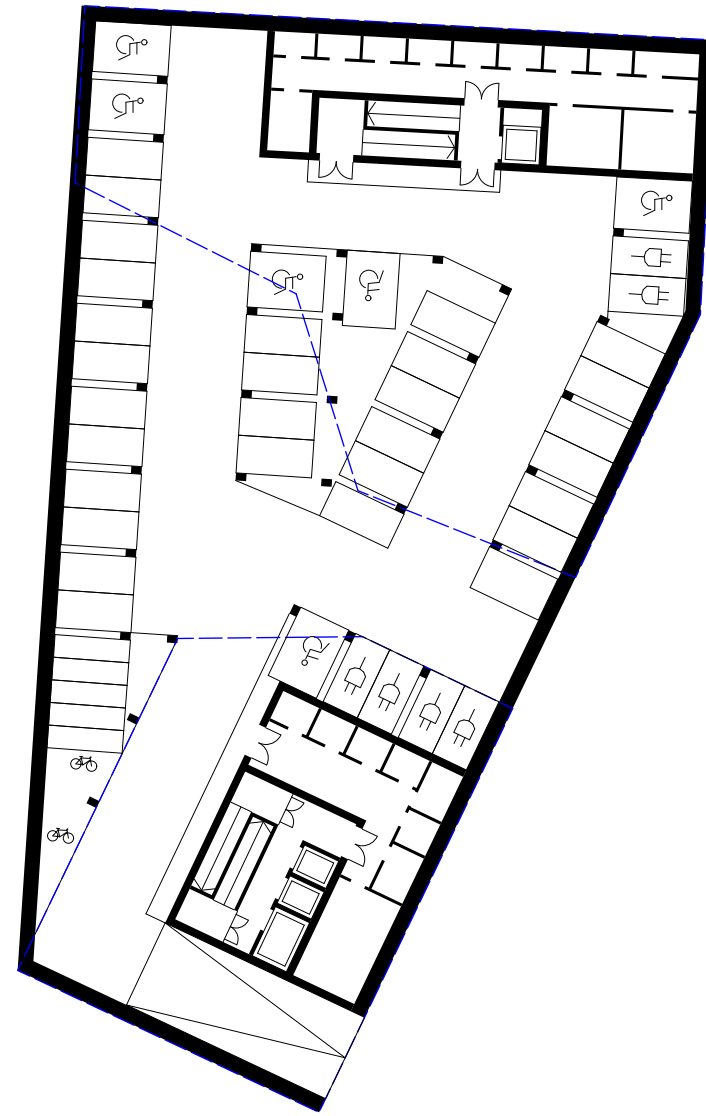
Büro

NUTZUNGSKONZEPT

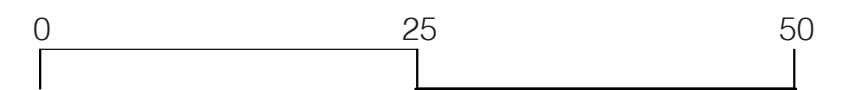


Wohnen

NUTZUNGSKONZEPT



GRUNDRISS UNTERGESCHOSS / M 1:500





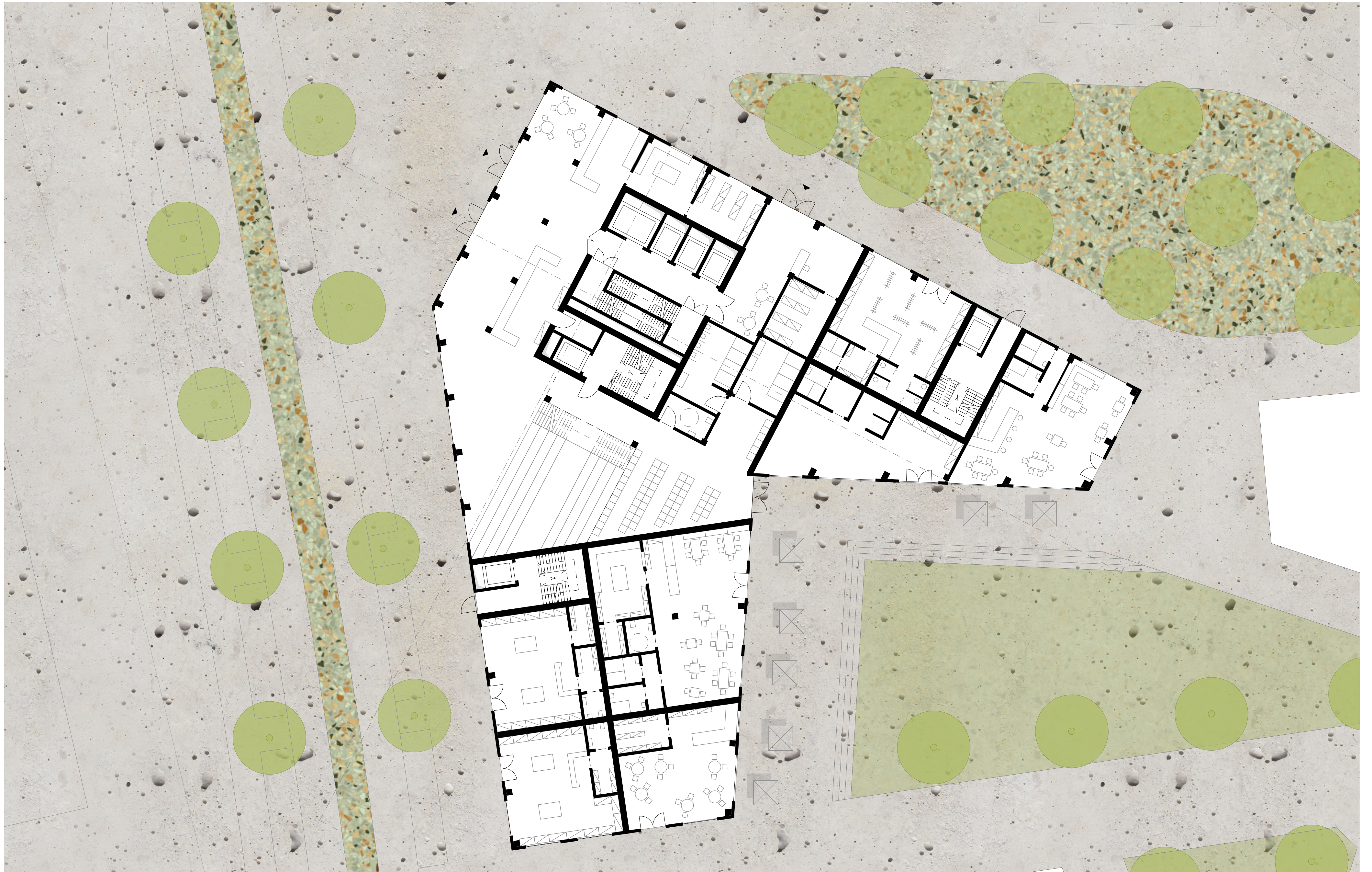
GRUNDRISS ERDGESCHOSS / M 1:500



0

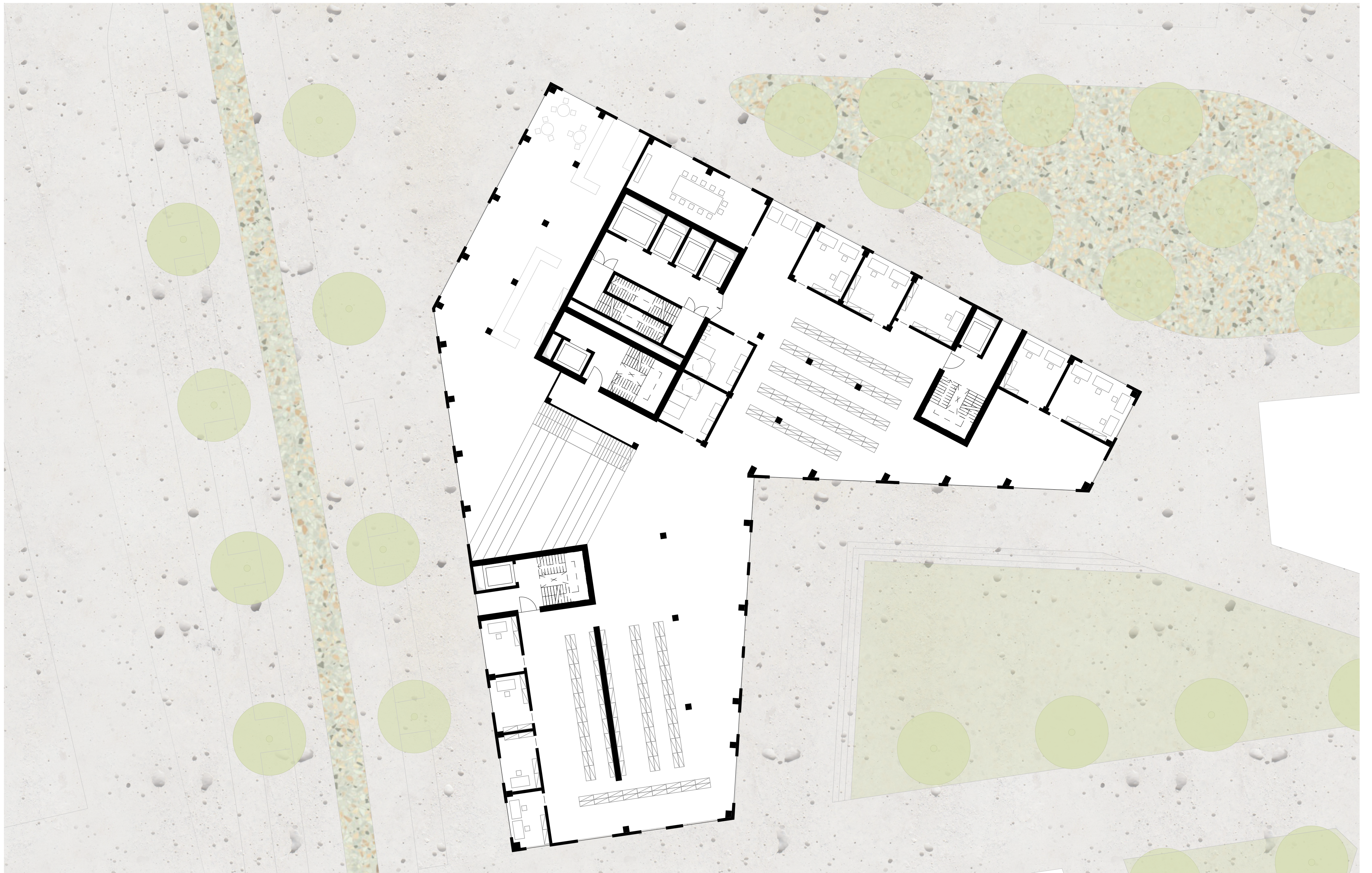
25

50



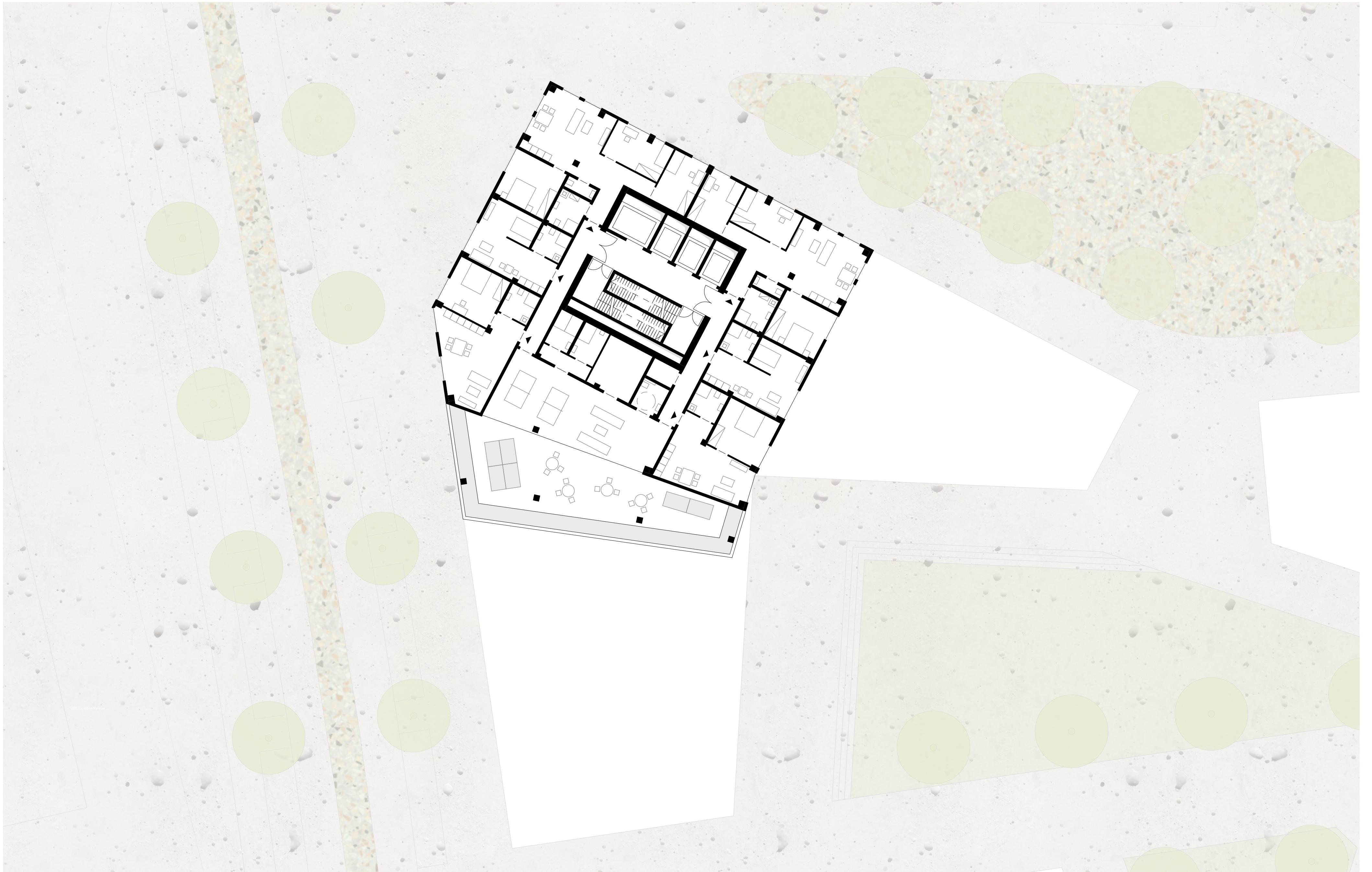
TOWER 01 / GRUNDRISS ERDGESCHOSS / M 1:200





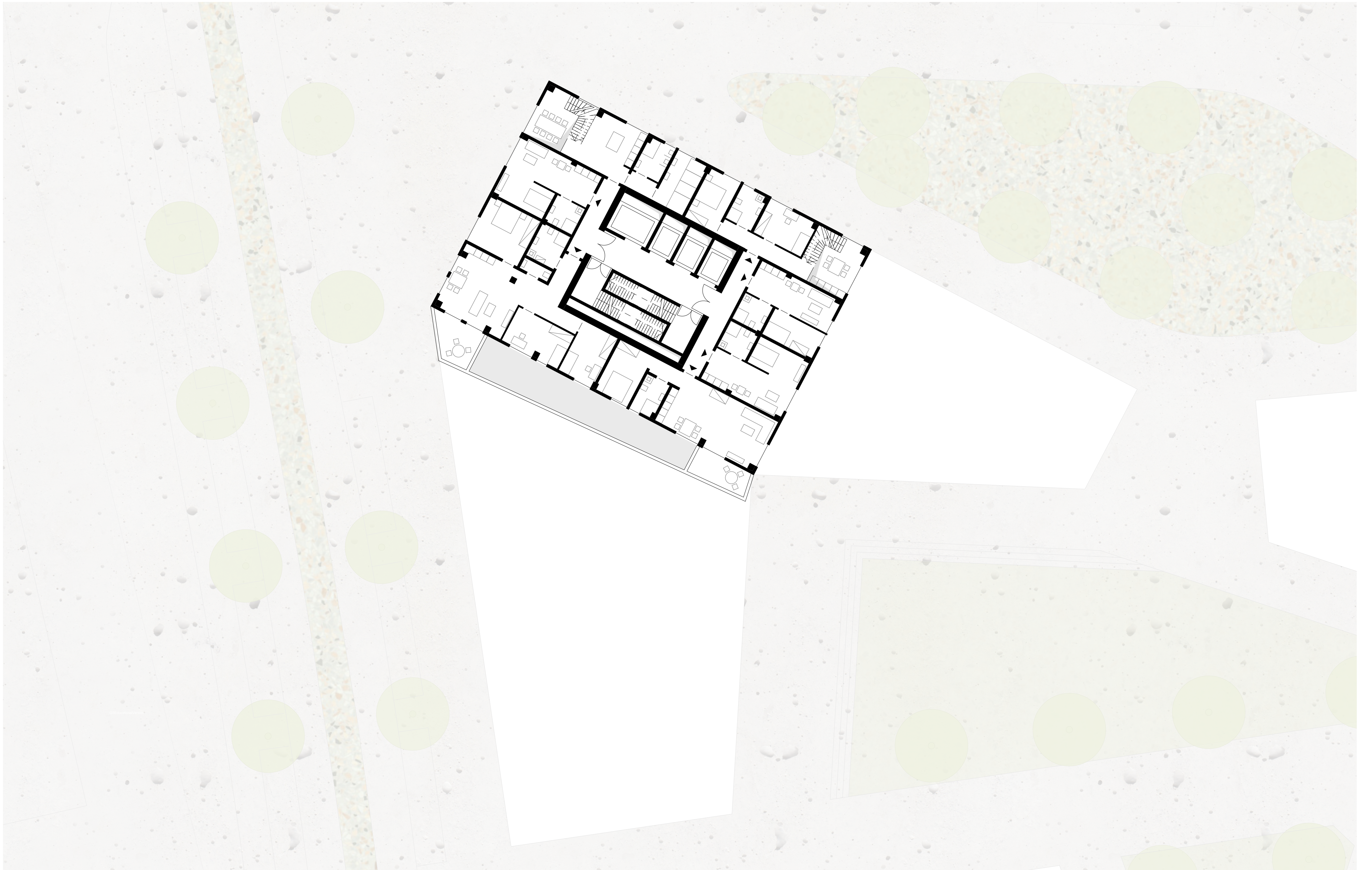
TOWER 01 / GRUNDRISS 1. OBERGESCHOSS / M 1:200





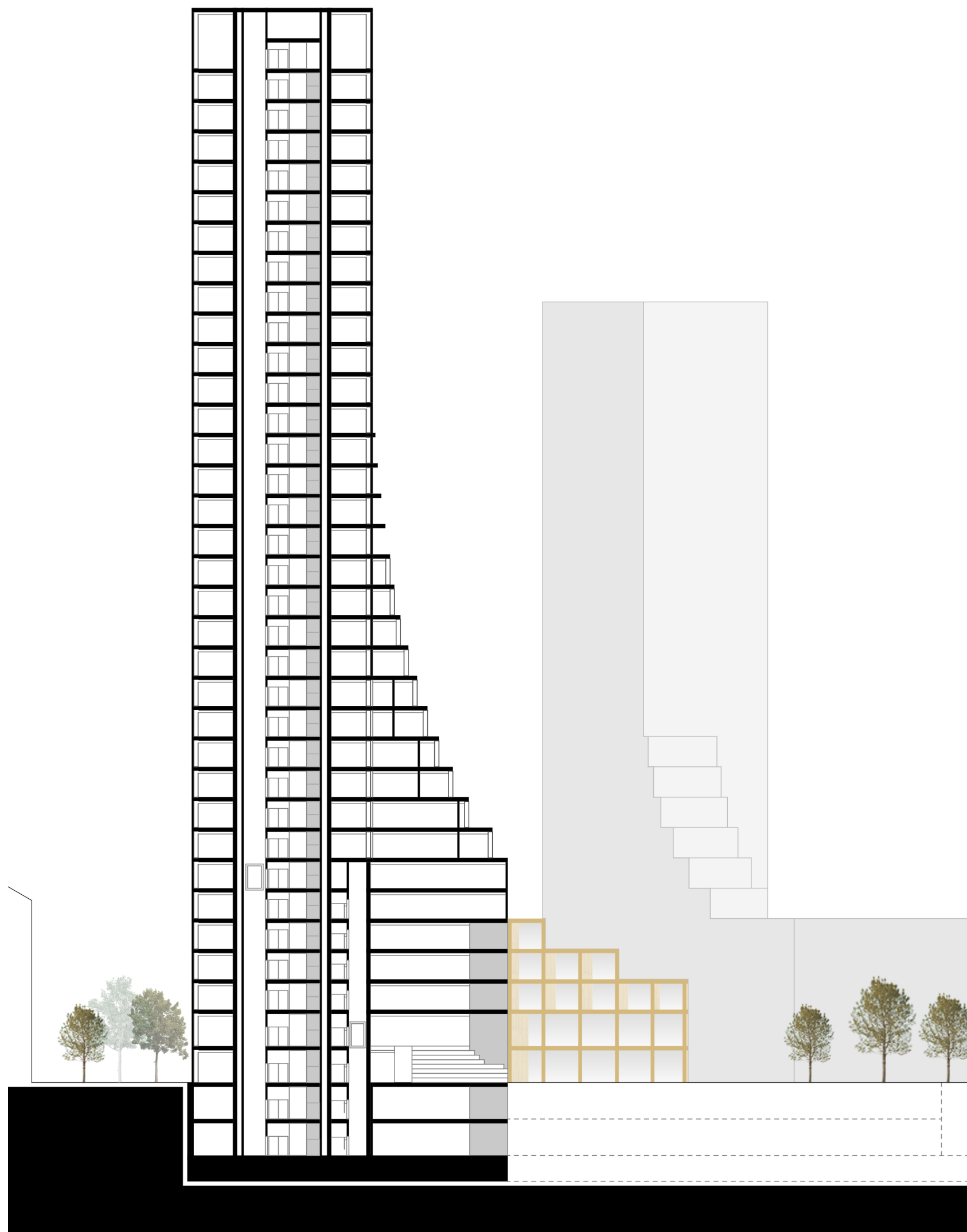
TOWER 01 / GRUNDRISS 7. OBERGESCHOSS / M 1:200



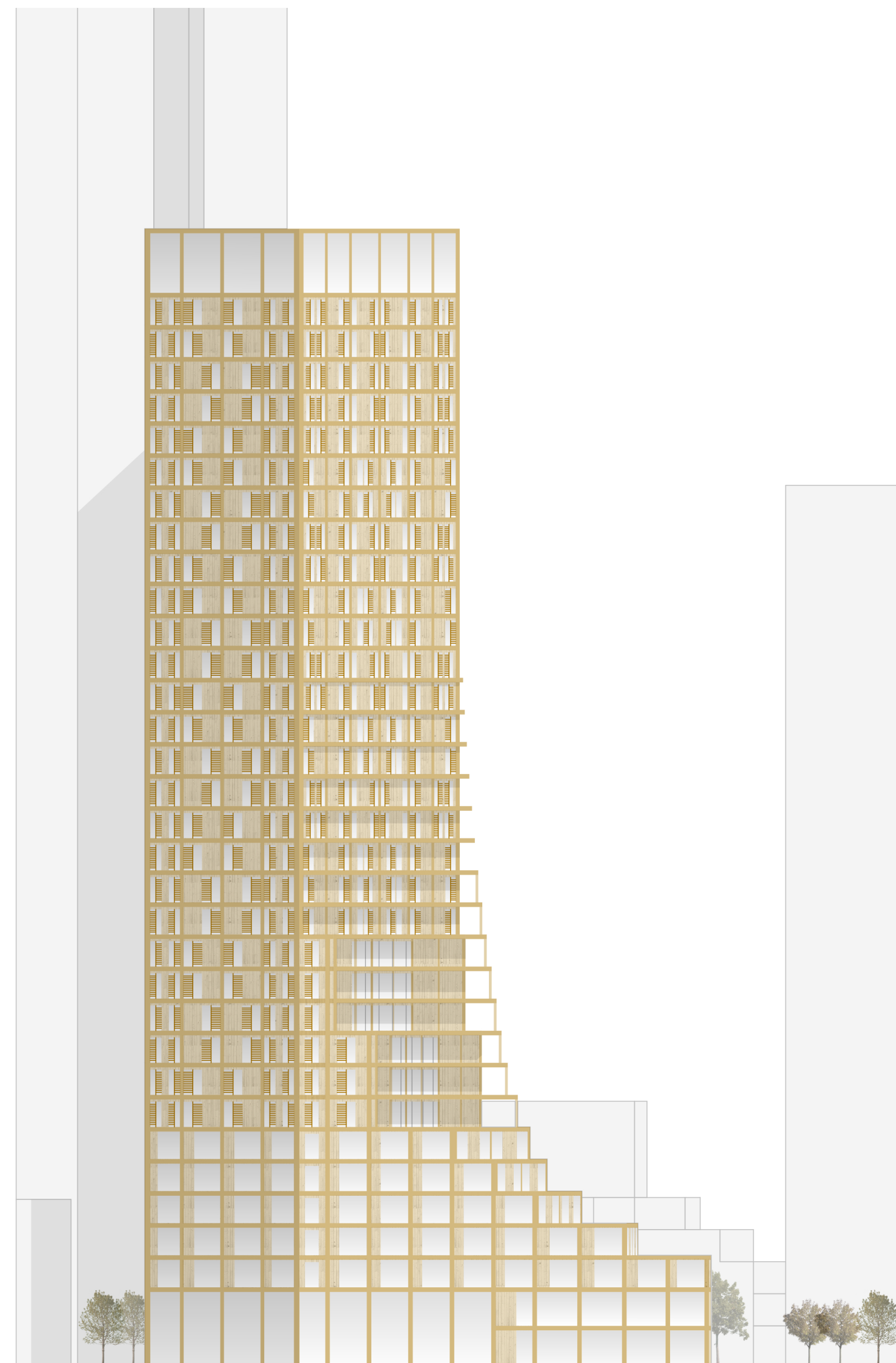


TOWER 01 / GRUNDRISS 14. OBERGESCHOSS / M 1:200

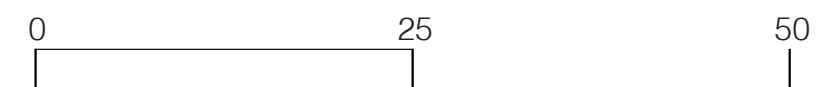


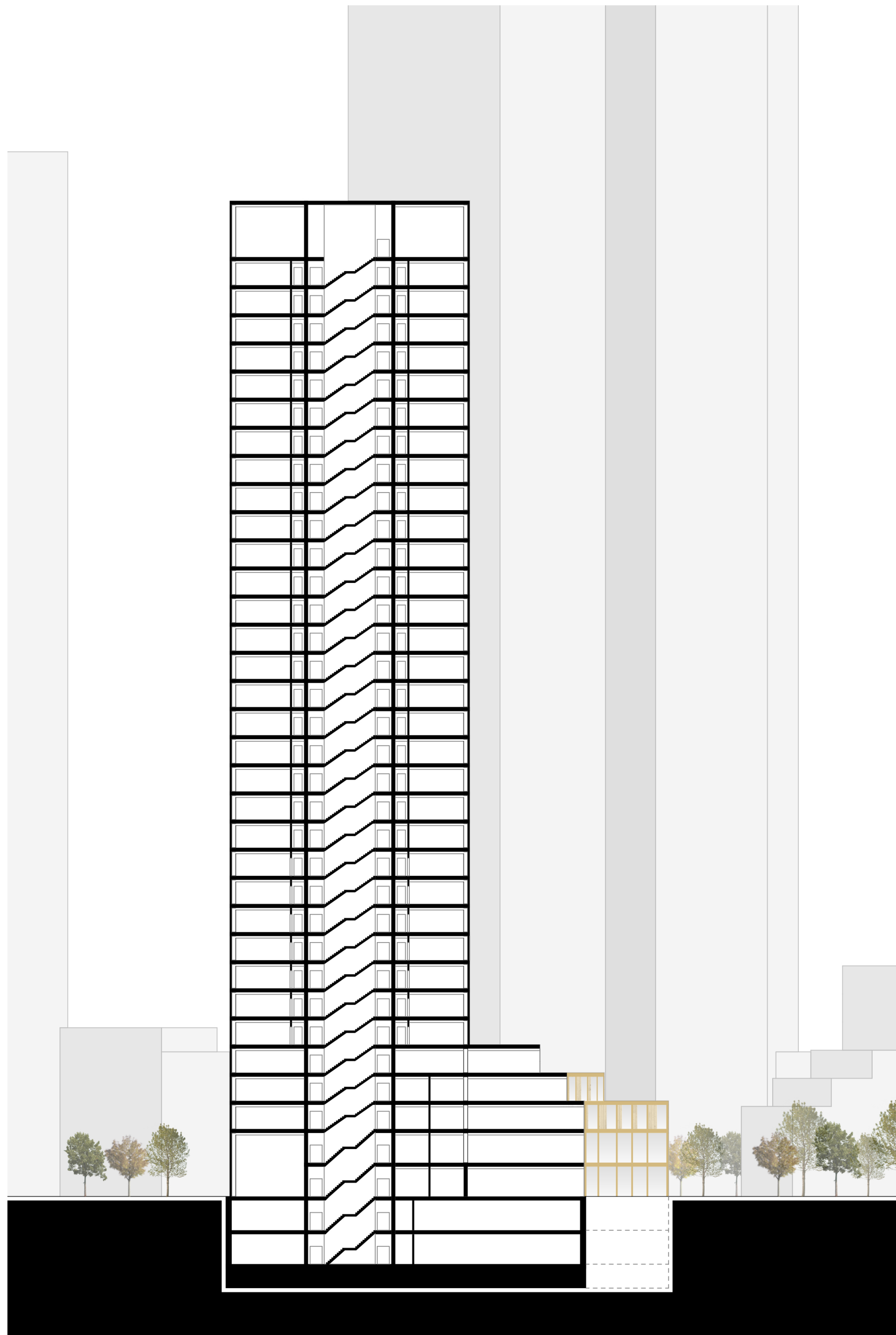


TOWER 01 / SCHNITT A - A / M 1:500

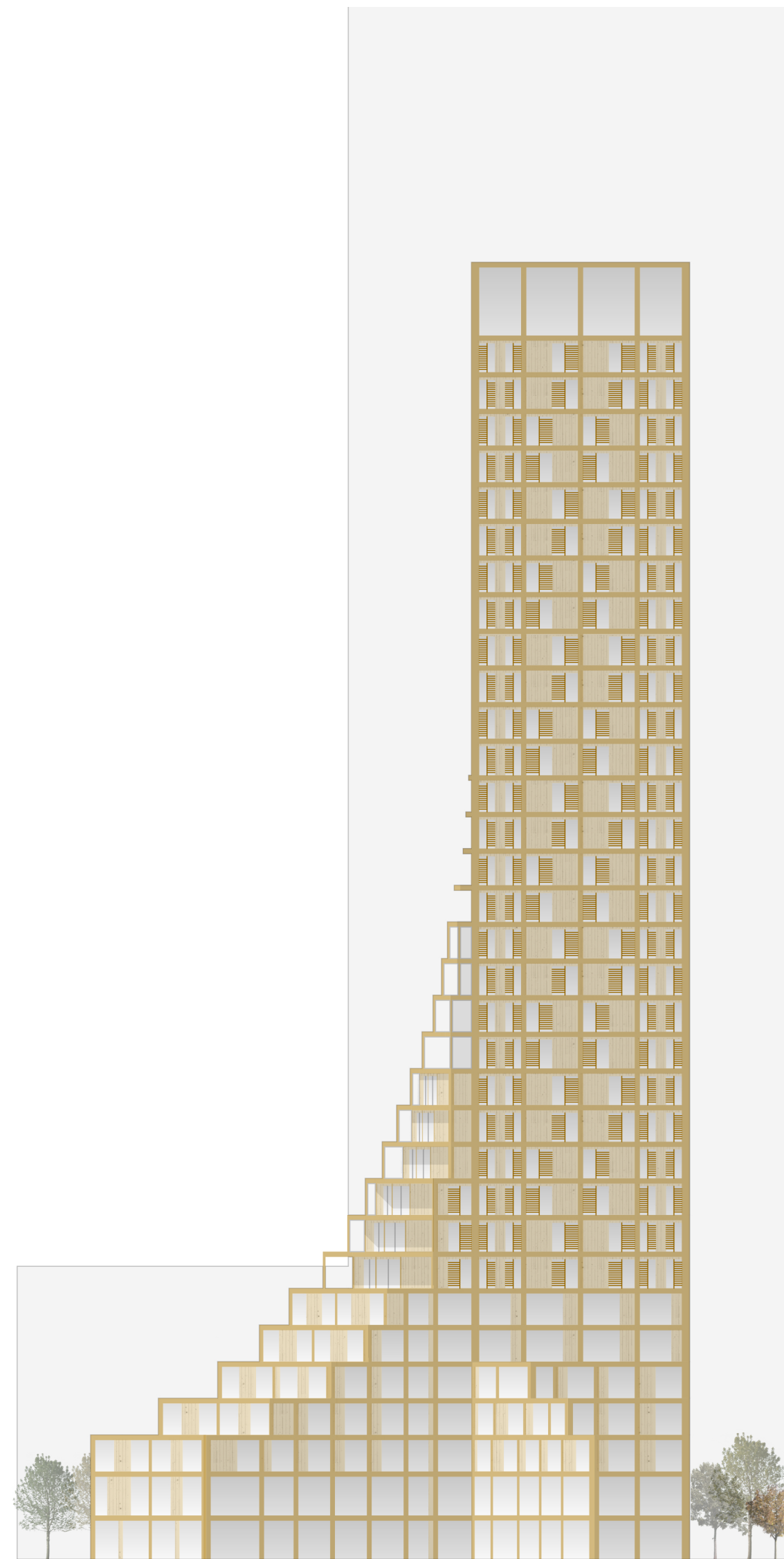


TOWER 01 / ANSICHT WEST / M 1:500



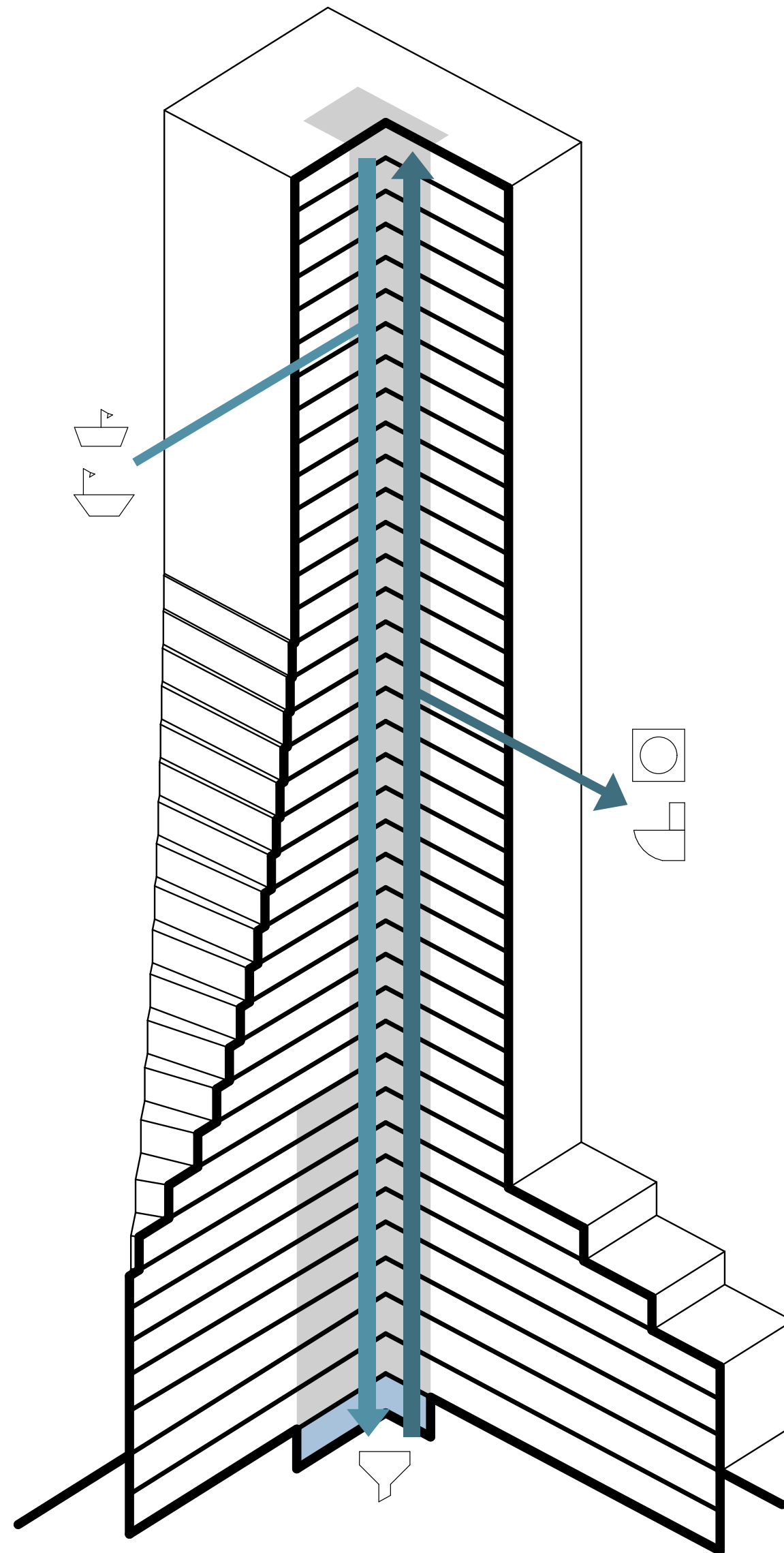


TOWER 01 / SCHNITT B - B / M 1:500

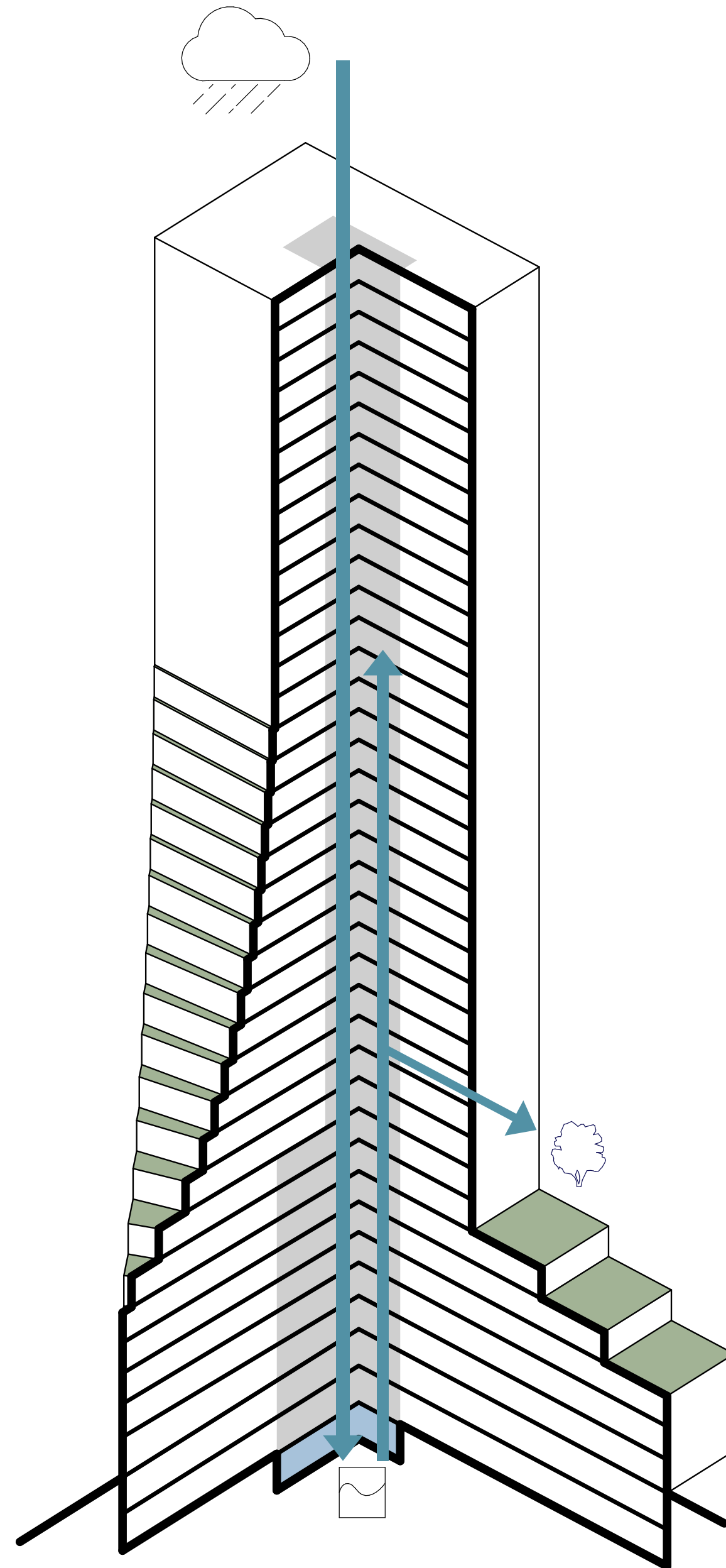


TOWER 01 / ANSICHT OST / M 1:500

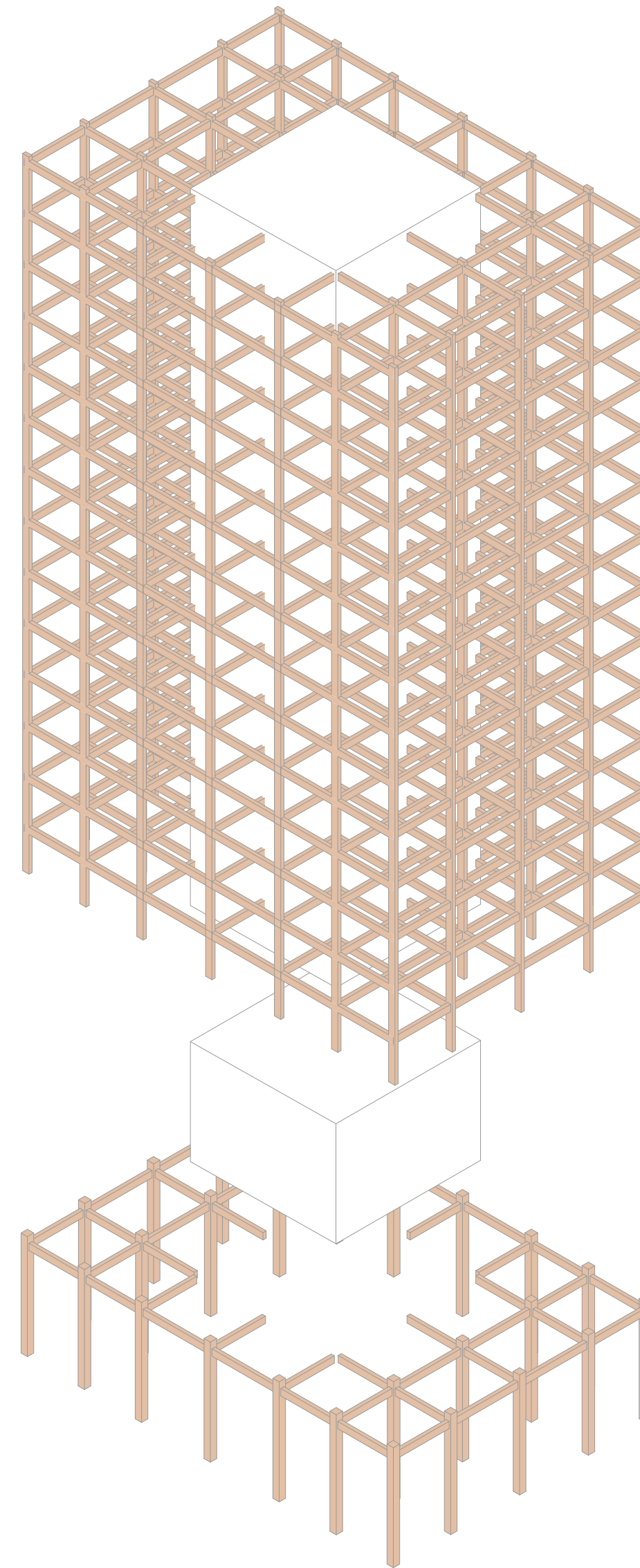
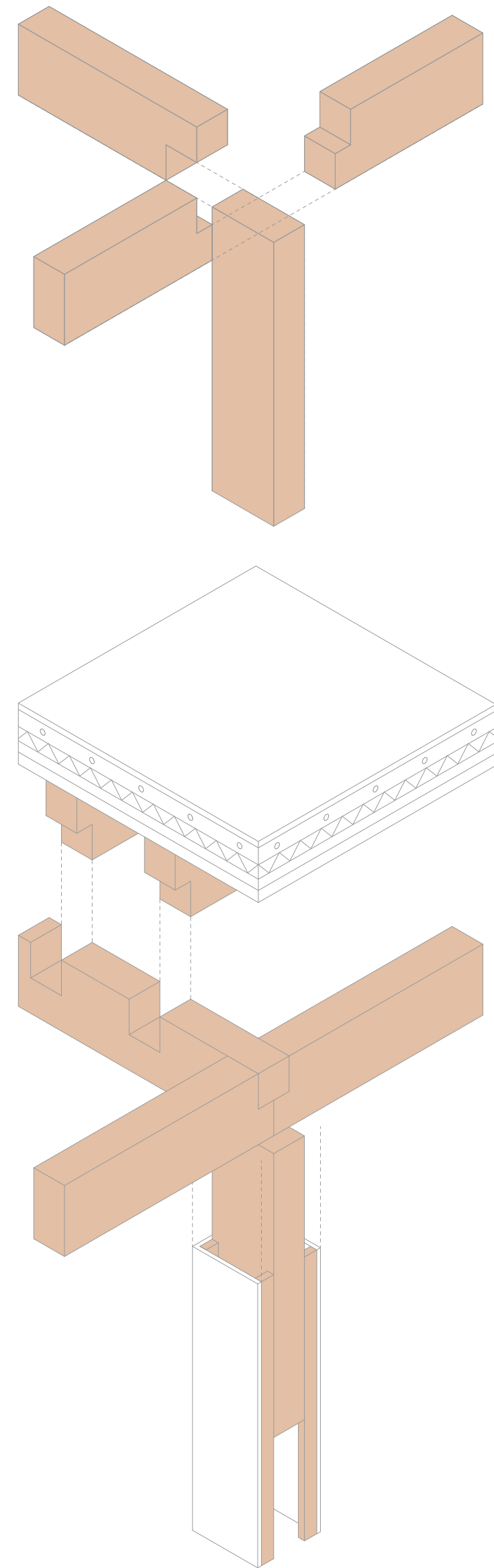




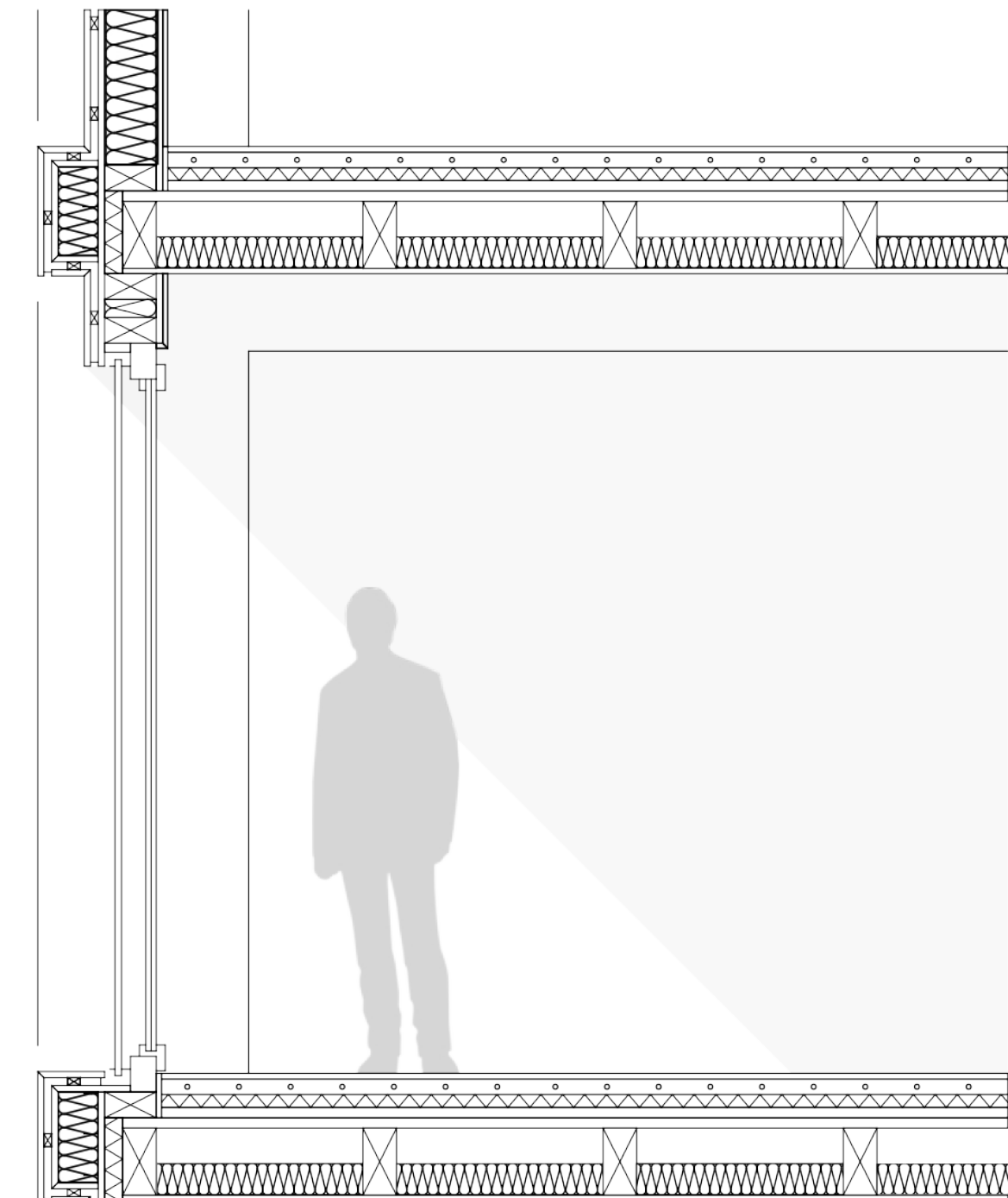
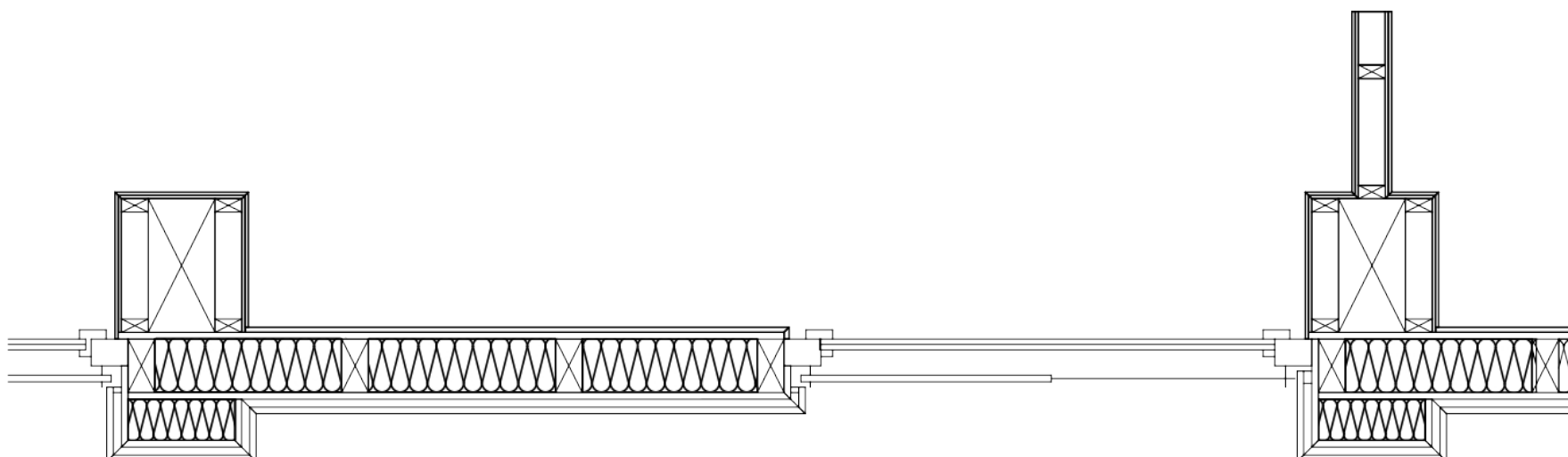
GRAUWASSERMANAGEMENT



REGENWASSERMANAGEMENT



TRAGWERKSKONZEPT



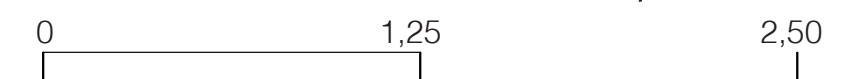
Deckenaufbau

22mm	Parkett
60mm	Estrich mit Fußbodenheizung
30mm	Trittschalldämmung (Holzweichfaserplatten)
40mm	Schüttung
	Rieselschutz
40mm	Holzschalung (Fichte)
120mm	Schalldämmung (Zelluloseplatten) mit Konstruktionsholz
20mm	Beplankung Fichte

Wandaufbau

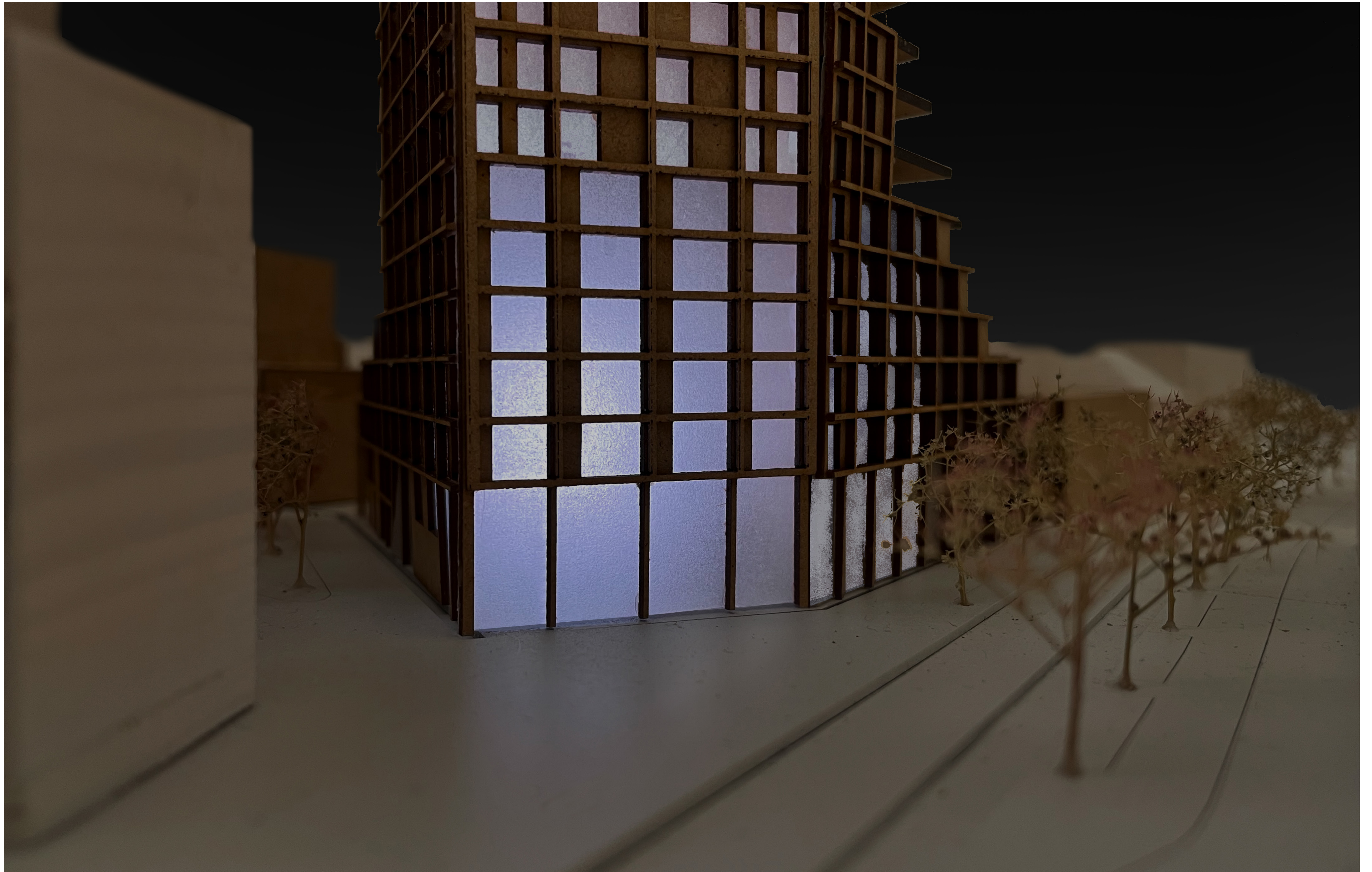
24mm	Holzverkleidung (Eiche)
	Holzlattung versetzt 30x50mm (Fichte)
	Windbremse
25mm	Holzschalung (Fichte)
160mm	Konstruktionsholz mit Zellulosedämmung
25mm	Holzschalung (Fichte)
	Dampfbremse
20mm	Lehmbauplatten

TOWER 01 / DREI-TAFEL PROJEKTION / M 1:25





Draufsicht



bei Nacht



Blick aus Osloer Straße



Innenhofsituation



Innenraum Aussicht Richtung Westhafen