

h u d e e

CONNECTION



The installation explore the poetic of a physical bubble correlating to the usual life. The plastic that surround the user give another perspective of the exterior. Shapes, textures, sounds are conditioned by the infrastructure.

The main idea is to bring awareness of others realities by a personal experience. Instead of getting out of your bubble we enable the connection between bubbles, and so more the bubbles, more the realities are linked and a larger network of perspectives is created.

Through a immersive installation we try to bright light into the social aspect of music and how it can be used as a mechanism of social change.

Many countries reduce their rates of violence and crime by guiding children in social risk situation to engage with arts profit free organizations, therefore allowing a wider perspective o future and possibili-

You get into the bubble through a hidden door and it seems like you are getting into a whole different place. You pick a style of music, which suits you best, and a music starts to play.

When the music starts a series of imagens appear dancing infront of you according to the sound that is playing. Concomitantly the display shows the social organization behind the song that you are listening right now.

You just sit there and let yourself dive into the music and image, enjoying the moment and realizing the importance of what you are experiencing. More information about

STRUC TURE

PROBLEM

PROJECT'S AIM

INTERVENTION

WHERE

HOW

TYPOLOGIES

- INTERACTION
- PUBLIC SPACE
- TECNOLOGY
- IMAGE
- MUSIC

PROBLEM



Self centered
way of living



Unawareness of
other reality.

PROJECT'S AIM

MUSIC INSTALLATION
AND CONNECTIONS

Heighten the awareness between people's different realities through an immersive installation focusing on the music as an instrument of social change.



WHY MUSIC?

The poetic of music is capable of dealing with the deepest feelings and emotions. In this way it's also a mechanism of engagement, transformation and catharsis. This led us to the choice of working with musics made by social organization that enable social transformation in a both personal and communal scale.



RESTORATIVE CITIES

The world crisis scenario intrigued us to draw attention to the self-centered way of seeing ourselves and how it develops world's issues in multiple scales. For example, how countries deal with COVID-19 and the response of the population affects the control of the spread of the virus.

In this way, questions about our behavior and where we rest our attention emerged. Restorative pockets in the level of the street are being used as a mechanism to, slowly, change the urban space. The project intends to activate spaces or renegeated or central in the urban area. They are categorized in four groups. The proposal uses an architectural structure combined with a media work. The media is related to a social cause and gives the opportunity to engage with social organizations around the world.

RESTORATIVE POCKETS

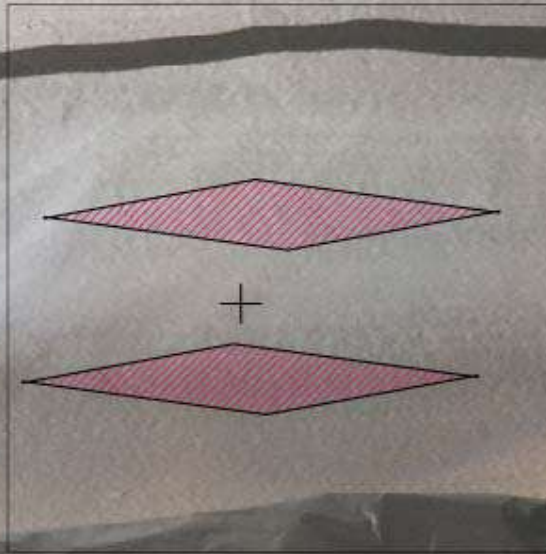
Restorative pockets. Mark small installations on the level of the street aiming to create a active public space, enable the development of the sense of the collective ownership of the city and highlighting the importance of the local community work and relations



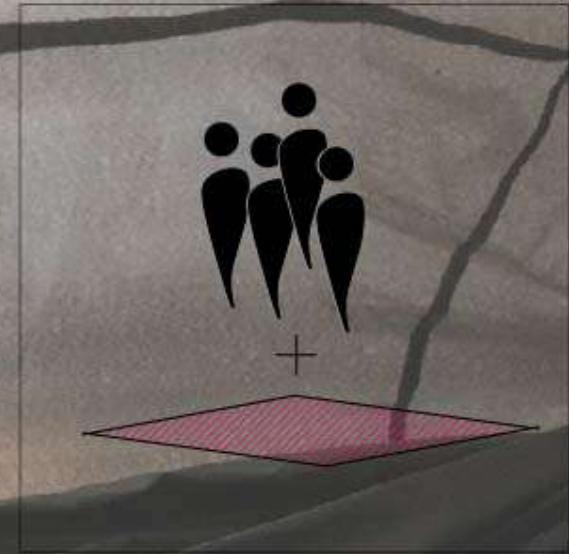
CONNECTIONS



Between
people



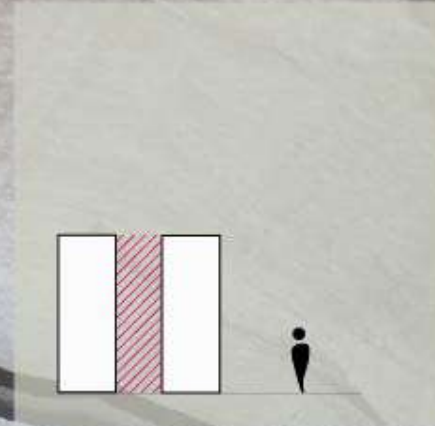
Between
spaces



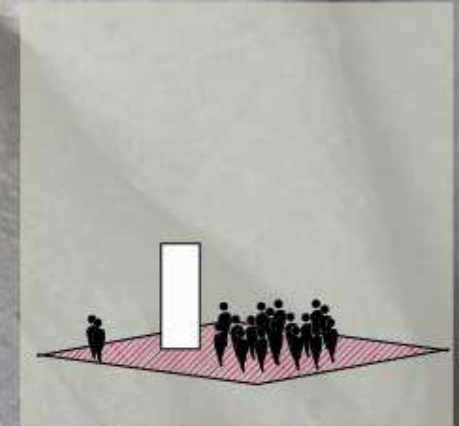
Between people
and spaces

INTERVENTION WHERE

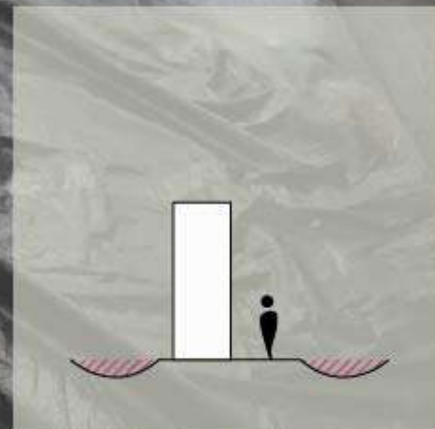
In order to decide where to place the installation multiples factors played importance wholes. Lack of attention, public importance, quality of the space amongs others. After 4 categories were established.



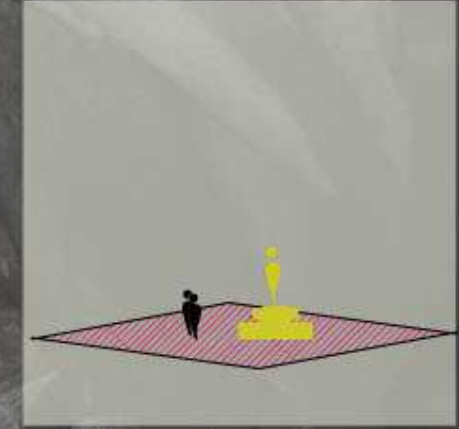
Residual



Conurbation



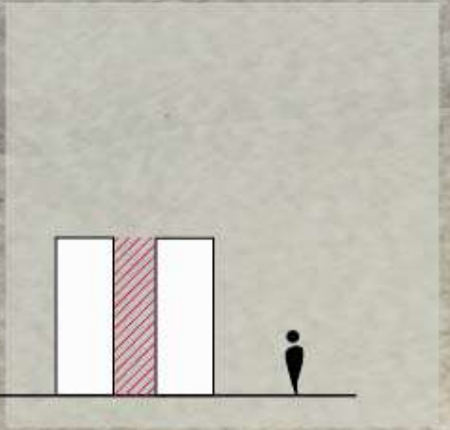
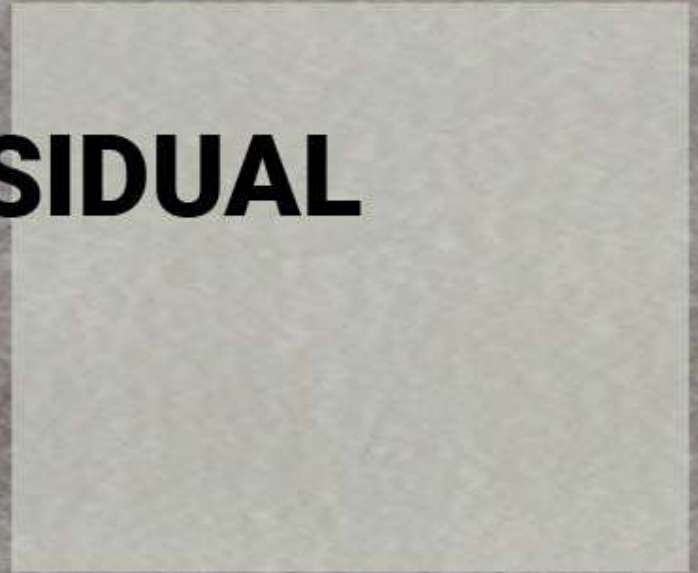
Precarious
infrastructure



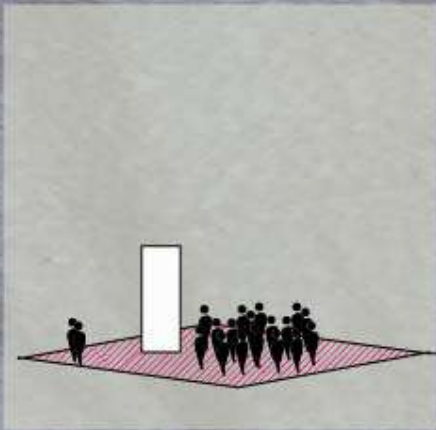
Historical and
cultural



RESIDUAL

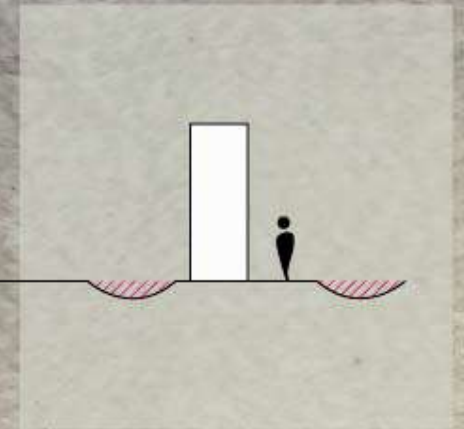


CONURBATION

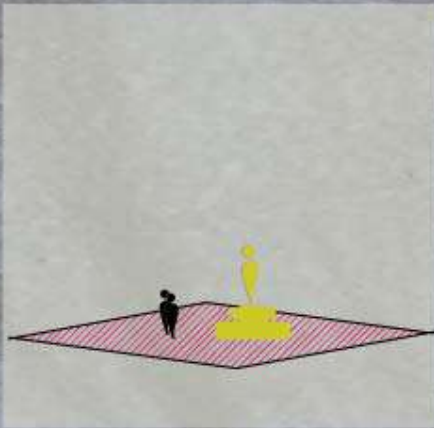




PRECARIOUS INFRASTRUCTURE



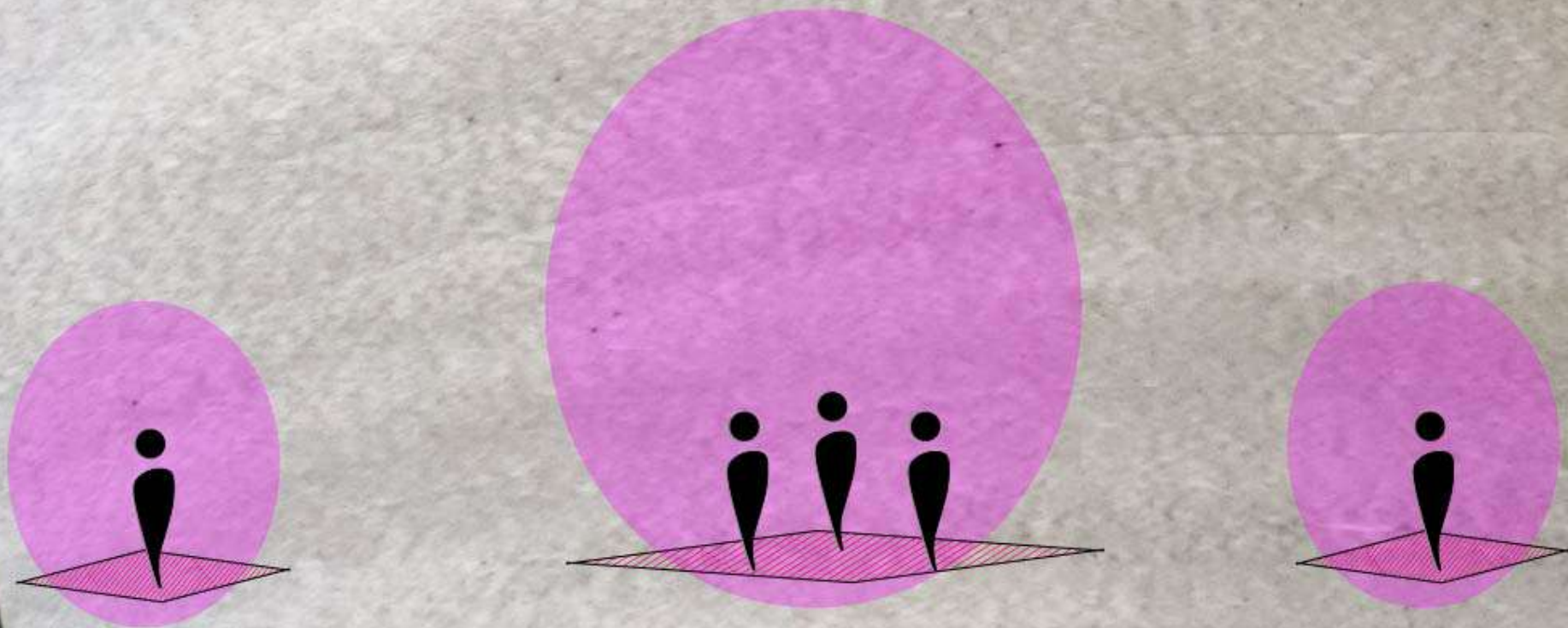
HISTORICAL AND CULTURE



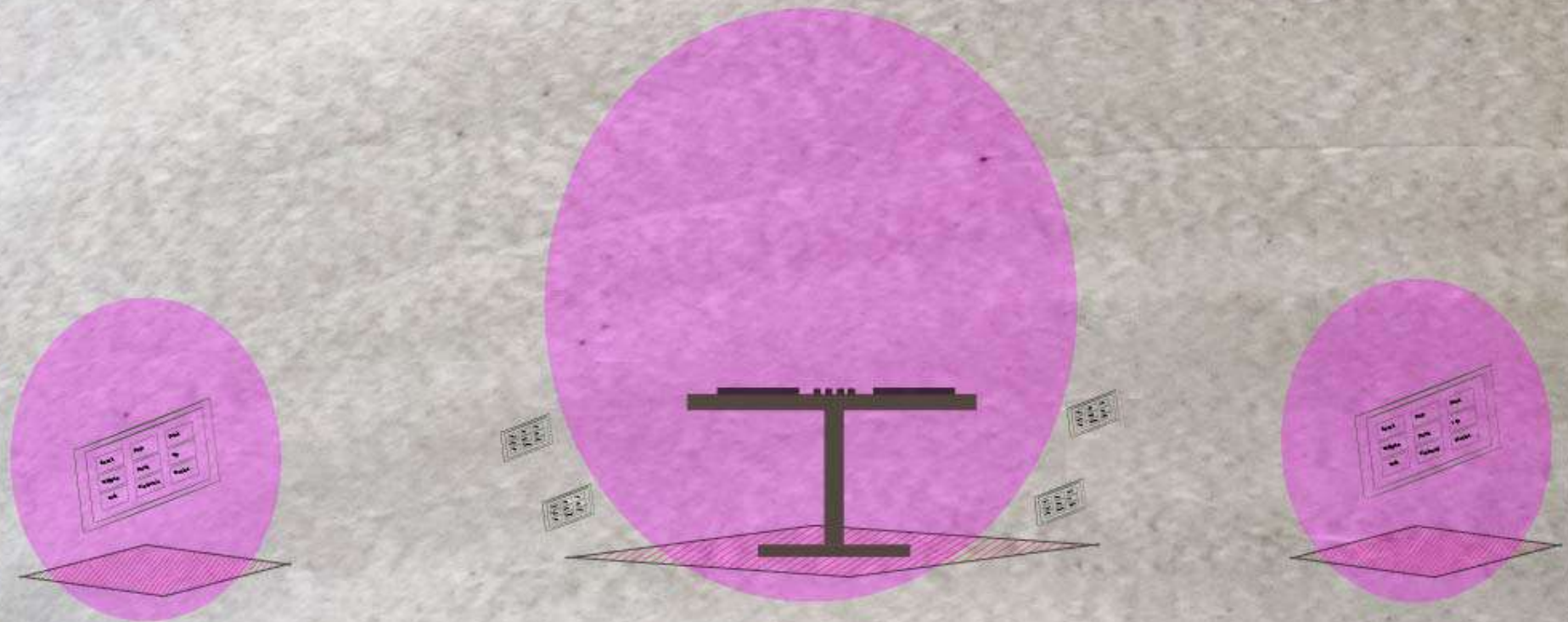


WHY
BUBBLE CONNECTION

MOTHER-CHILDREN INSTALLATION



MOTHER-CHILDREN INSTALLATION



Interface city Y

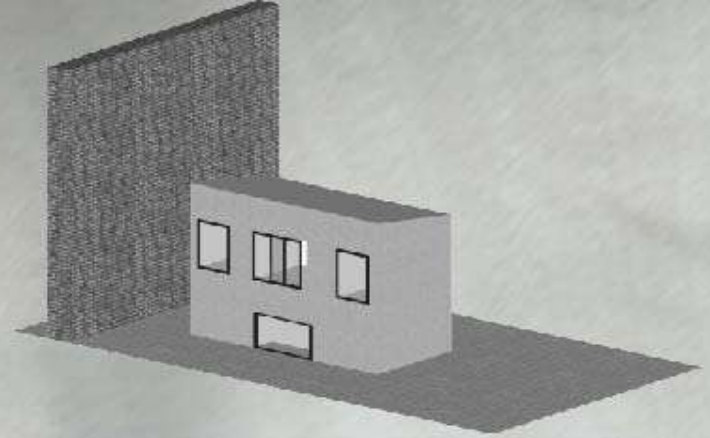
Interfaces + Soundboard
Media Architecture Biennale
2020

Interface city Z

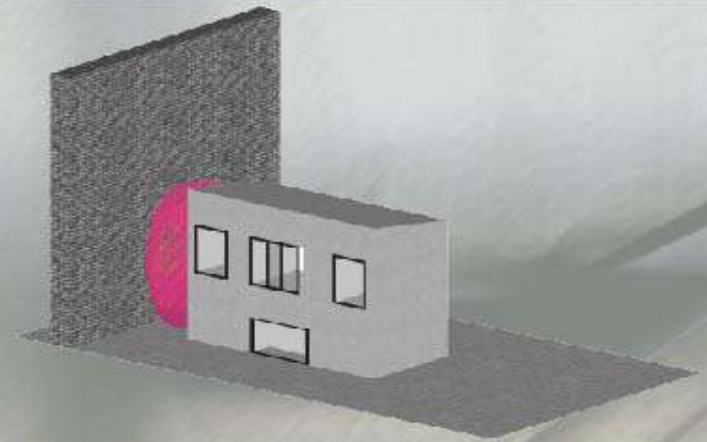
INTERVE NTION HOW



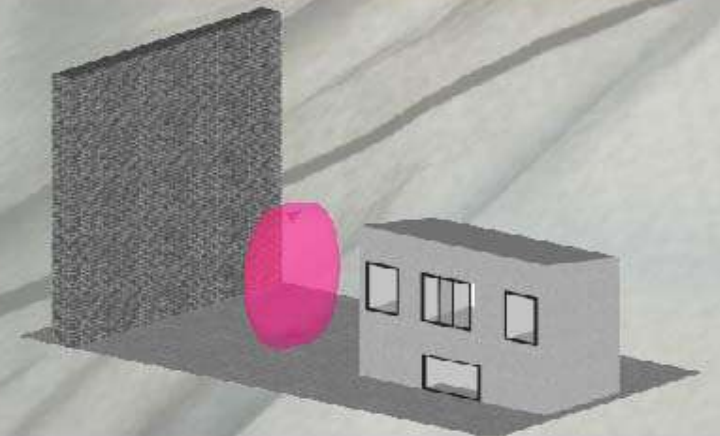
Pre existing space



Space with intervention



Axonometric view



APPROACHES

1

Interface and
music choice



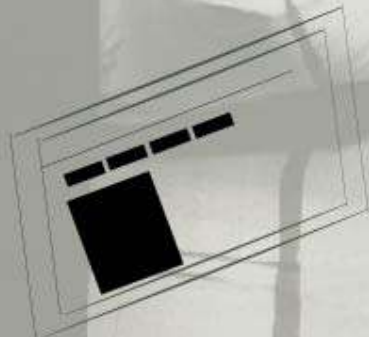
2

Music and
Image



3

Website



Working concomitantly three different approaches were developed to desenvolve a cohesive and sensitive installation.

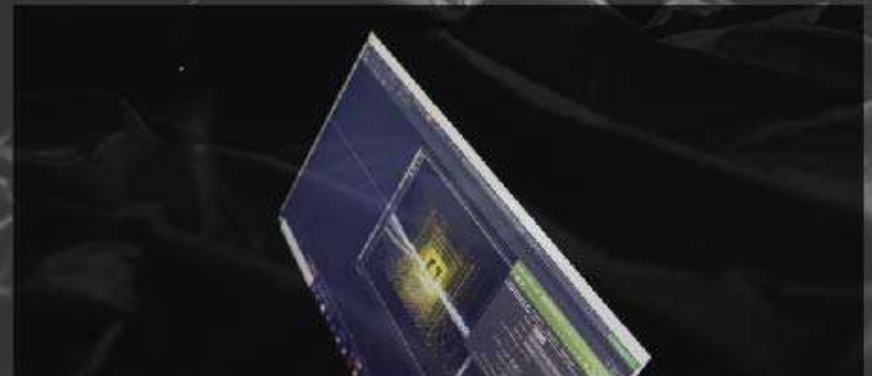
INTERFACE AND MUSIC CHOICE

A interface designed with 9 buttons will be displayed on a screen with only names of music genres, so the choice will be made by the personal likes of the speactor.



MUSIC AND IMAGE

After the genre music choice, one music of this type will be played randomly and a visual effect will be triggered by it. On the screen the social organization that produced the music played will be shown. The senses will be heightened...



WEBSITE



In addition to the installation a website containing deeper information about the social organization will be available, not only to inform the user of the intervention about their social work but also to enable the support of social action.

BUBBLE CONNECTION

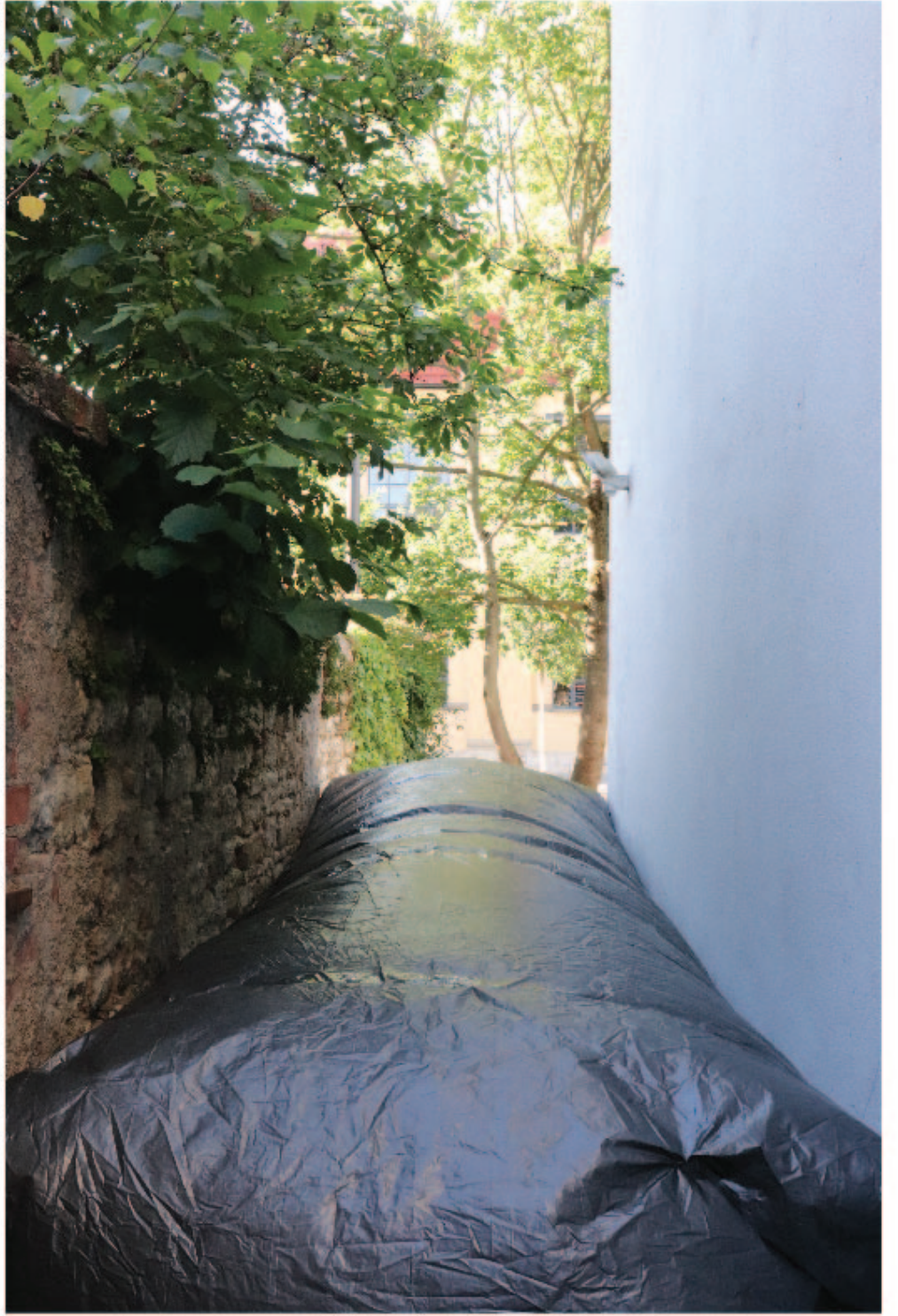
[Inicio](#) [About us](#) [Institutions](#) [Forum](#) [Contact.FAQ](#)  [Log in](#)

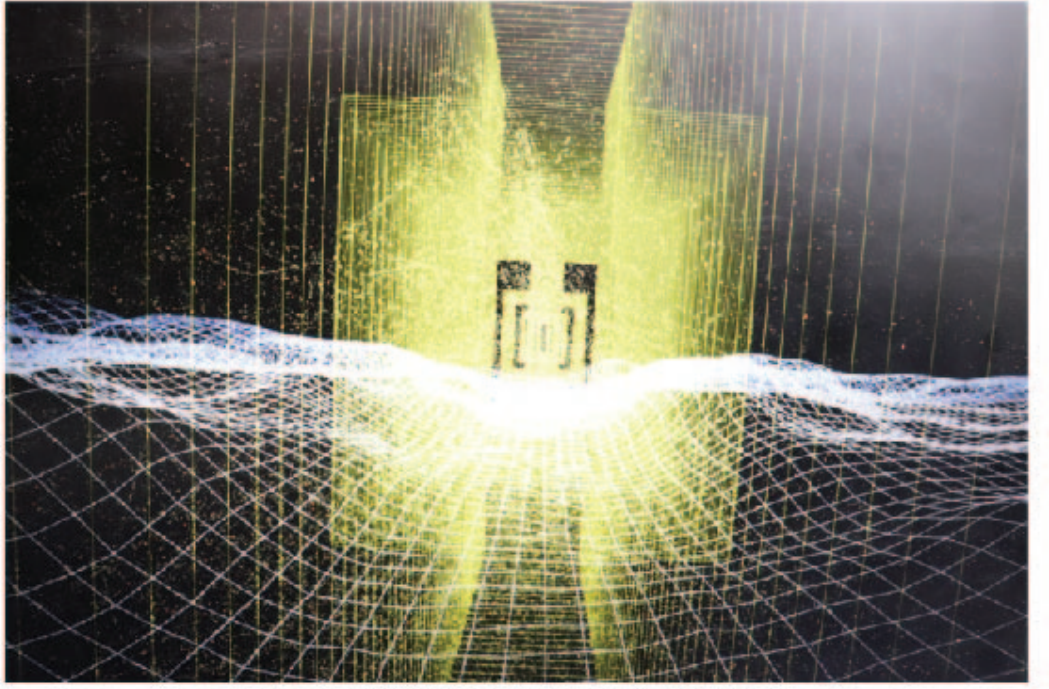
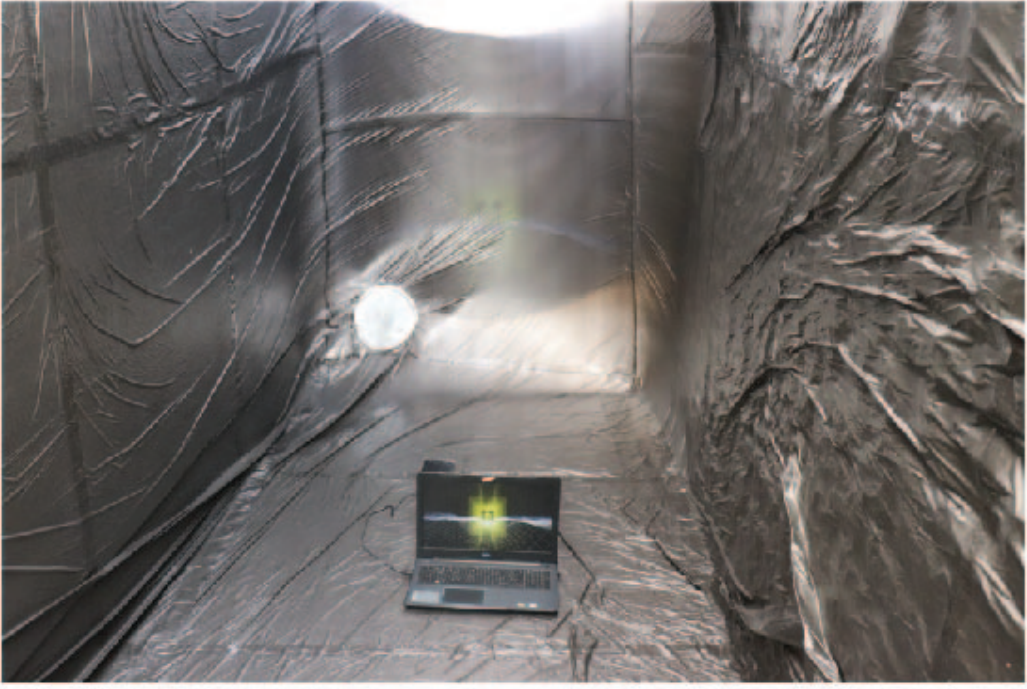


THE INS- TALLATION

- . "Restorative cities" architecture infrastructure on the level of the street
- . Connection in three layers
- . Feeling trough music
- . Awarness of others realities







REFERENCES

Penique productions

Media Architecture Compendium - Digital Placemaking

AfroReggae

THANK YOU FOR YOUR ATTENTION