

space

home

safety

privacy

intimacy

square

grey

concrete

colours

sky

There is a lot of **SPACE**. A lot of people. A lot of different people. Different cultures. Different colours. Different religions. Different.

A lot of clichés, too.

Everybody needs **home**. Everybody needs to feel safe, to have privacy, **intimacy**, space, room.

When you go out and see just **GREY**, dirty **CONCRETE** everywhere, then you come home to your room with one, small window everyday, you just accept it, because it is **IMPOSSIBLE** to **change** it. But there are also **beautiful places**, beautiful houses, colours, people, trees, you just need to find the right place and right view. Which could be really hard. You can choose.

Still, the **view from your room** is the same everyday.

There is a nice **CHURCH** and a SMALL square. There is a large building that encroaches on this space. The building will be removed. The church is now an undisputed dominant. But there is still a lot of grey around. To make a dialogue, I will place a SMALL building nearby, where the streets cross.

The church is old, made of **red bricks**. New building is also red, but made from monolithic, red-coloured **concrete**. There is an **entrance**, not a door. Part of the roof is missing. There is a **white cube** in the corner. You will go there, sit on the cube and **watch**. Or sit there with your eyes closed. Or stand on the cube.

In case you decide to keep your **eyes** opened, you can watch the plain, red, concrete wall, also you see tiny, narrow **brass line**. The line starts on the ground at the cube, leads along the ground, then along the wall, to a SMALL hole in the wall. The hole has the shape of a window with a **gothic arch**, but it is not a window at all, it does not have glass. It does not even have a **frame**, but itself forms the one and offers a view of the neo-gothic **church tower**. The brass line continues across the ceiling towards you and ends at the edge of the hole in the roof. The same line leads up behind you. If you look at its end, you will see **the sky**.

Anyway, there is a **FRAME** and limited view. However, it is still up to you to go inside and watch. One building cannot change the city and **feelings** of its inhabitants, it makes **sense**. Nevertheless, it offers them the opportunity to **look** around, to see differently, not to think so much. Or just thinking about what they like, what makes them **happy**. Or what to improve to make their lives better.

This is just an offer.

The sky and the red wall are just an **escape** from **reality**, it remains the same outside.





magnificence

humility

entrance

room

cube

concrete

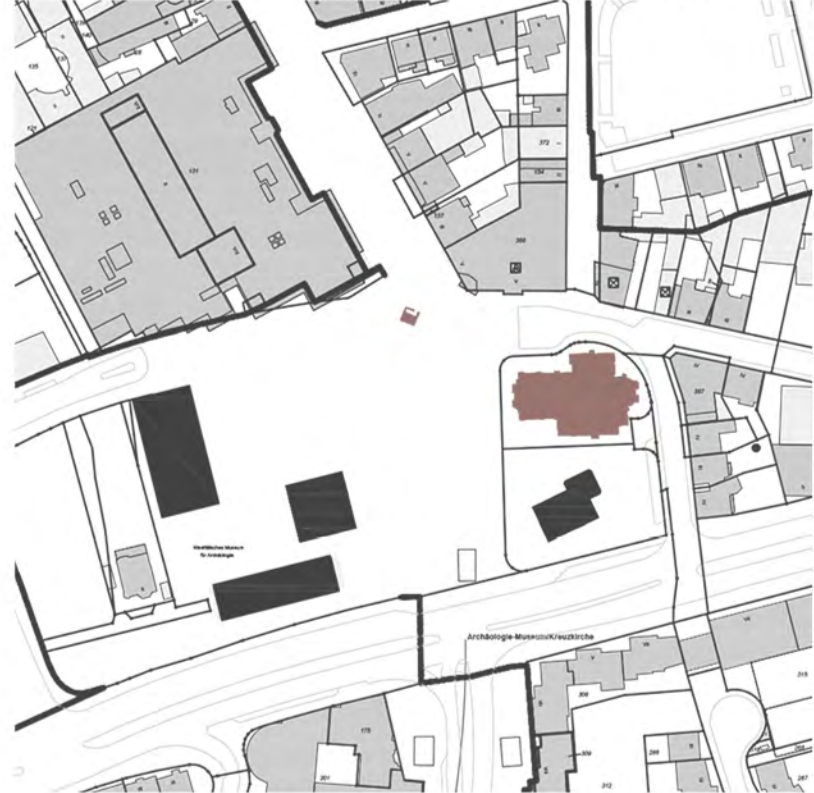
red

cube

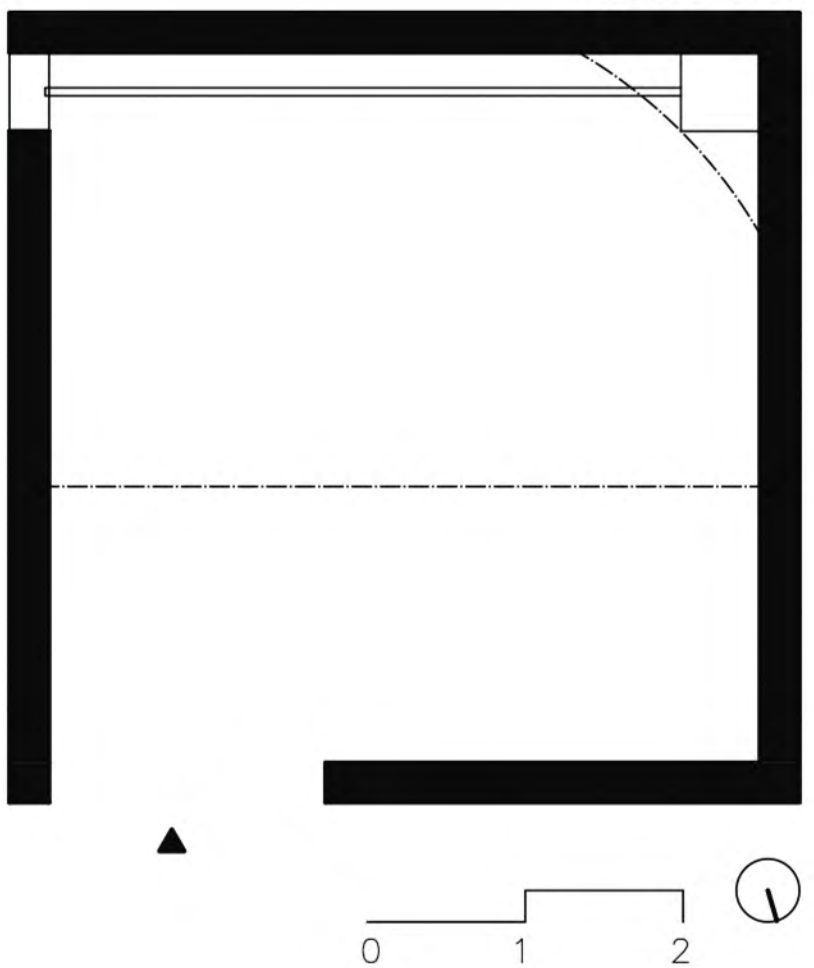
SITE PLAN\_ORIGINAL



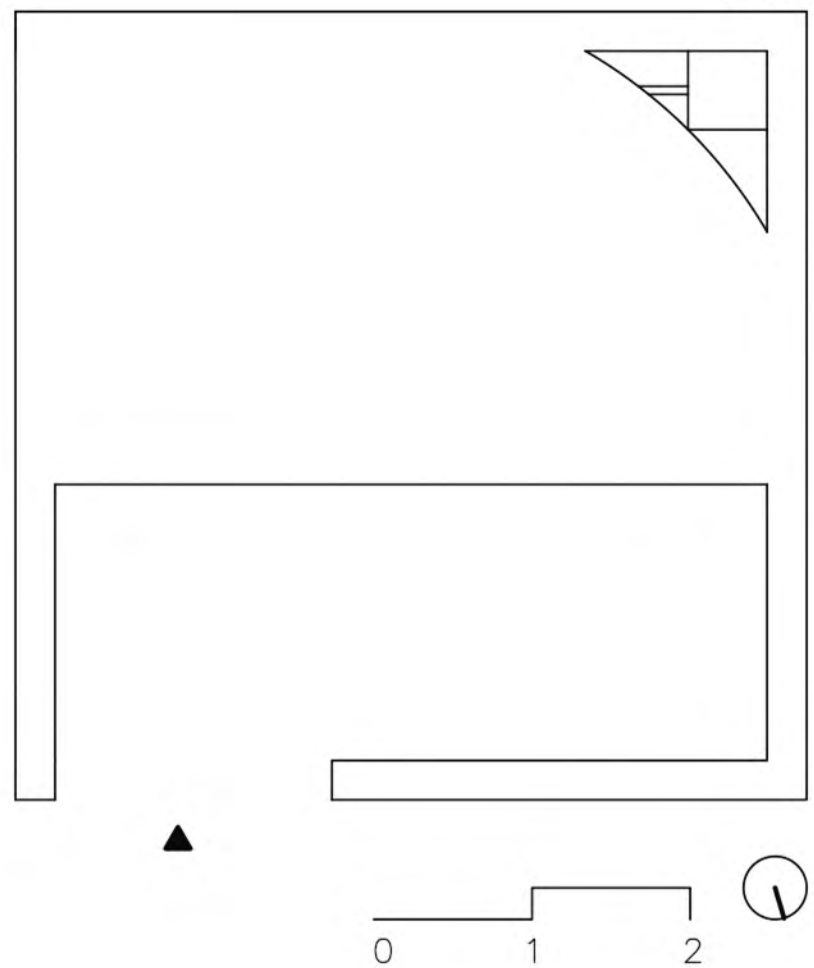
SITE PLAN\_NEW



FLOORPLAN



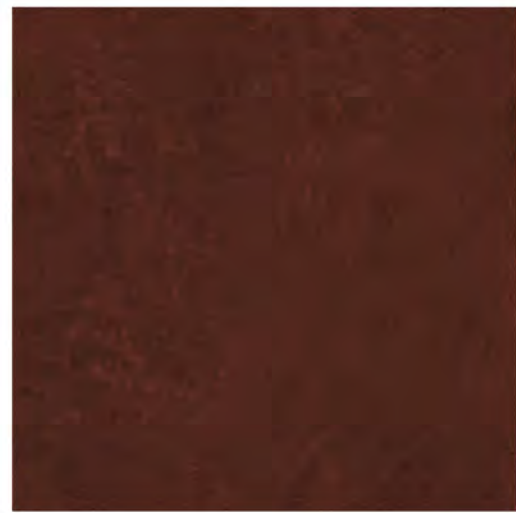
ROOF



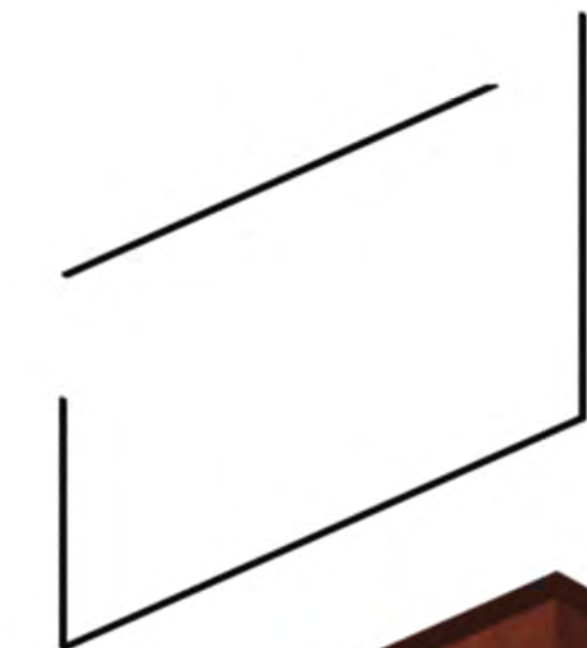
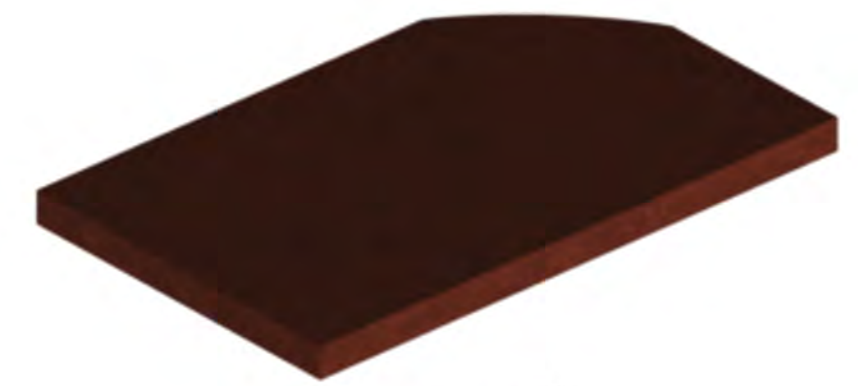
BRASS



WHITE  
MARBLE



RED  
CONCRETE





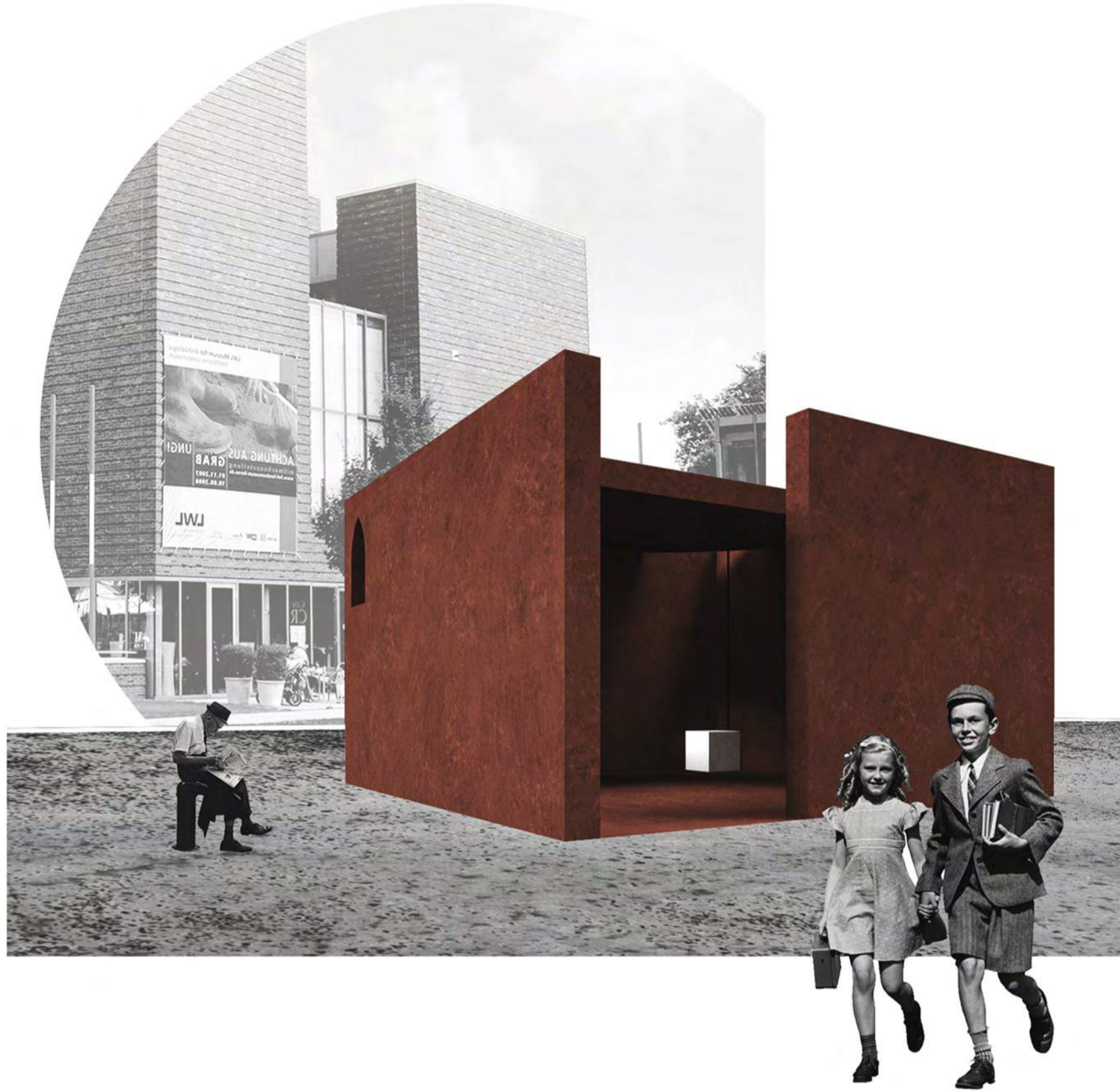
cube

marble

white

LOOK!

line



brass

choice

view

