

URBAN INTERVENTIONS

Interact with the urban places by using found- objects and inexpensive materials.

WORK OF ART I WOULD LIKE TO MAKE

Attempting to
re-
appropriate
neglected
architectural
spaces in
imaginative
and
humorous
way.

New spatial
and visual
codes
broaden,
penetrate and
super impose
the already
existing ones.

The parasitic
takeover of
everyday
structures and
spaces, to
which we
adopt
ourselves as
we move
through the
city, can be
witnessed a
wide array of

works;
bricolages of
Lego building
blocks filling
up gaps in
city walls...

WORK OF ART I WOULD LIKE TO MAKE

THE BOOK?

VIDEO?

PHOTOGRAPHY?

PERFORMANCE?

HAPPENING?

INSTALLATION?

WHERE?

list of the monuments in Weimar//



Goethe & Schiller Monument

If we had to name just one symbol for Weimar, it would doubtless be Ernst Rietschel's statue of Goethe and Schiller, which has stood on Theaterplatz since 1857. Interestingly, their eyes are at almost the same height – yet do not meet. Copies of the statue can be seen in Cleveland, Milwaukee and New York. The inscription on the base reads: "THE"



Carl-August

Head and shoulders of the Grand Duke in front of the Friedrich-Schiller-Universität to mark the eighteenth year of peace and science,



Hafis-Goethe Monument

"Those who know themselves and others will also realise that Orient and Occident can be brought together in the chairs recast by the poet Hafis."



Liszt Monument

Franz Liszt (1811–86) made Weimar a centre of music of European renown when he was director of music extraordinary to the Weimar court. He reshaped the town's musical life and influenced its Silver Age. And it was in Weimar that Liszt conducted the first ever performance of



Puschkin Monument

Pushkin (1799–1837), Russian's greatest poet and the founder of modern Russian literature, was an ardent aficionado of Goethe and was himself greatly admired in Germany. A statue was erected to Pushkin in 1949 on the edge of the park next to the library tower to commemorate the 150th anniversary of his birth.



Herder Mo

It was Weimar's 16th birthday. Peter and Paul, philosopher and General Superintendent, upon Goethe according to



Bach Mo

The statue was unveiled later, before the link between the two was generally known. Until 1717, resignation of Wilhelm, for



Johanne

The statue was unveiled to the public. Although his Christmas Eve looking after the Association



Wieland M

Christoph Martin Wieland, successful writer, translator, and attention of his two sons. We Wieland's ho



Hummel

Composer was employed by famous cap pianists of Beethoven



Mickiewicz Monument

In 1956, a monument was erected near the bank of the River Ilm in honour of the national poet and passionate admirer of classical German literature Adam Mickiewicz (1798–1855). Mickiewicz was the principal poet of Polish Romanticism and the celebrations



Wildenbruch

When this monument was erected, it was thanks to a honour of drama Richard Engelmann School of Art. The sculpture.



Ernst-Thälmer

The statue of Ernst Thälmer in the square named after him, who died at Buchenwald. He was the leader of the Reichstag from



Albert Schweitzer Monument

The first statue in the world of German humanist Albert Schweitzer (1875–1965) was erected in the East German era by the Christian Democrats. Weimar was chosen (as well as the Schweitzer Memorial and Social Centre) by the Albert Schweitzer Committee since Albert Schweitzer's personality and characterised by humanity.



Louis Fűrnberg Monument

Louis Fűrnberg (1909–57) began his literary career in Czechoslovakia by writing poems against the newly established Socialism. He came to East Germany in 1951 as an exile, moving to Weimar in 1954. Fűrnberg was a co-founder of the journal Weimarer Beiträge ('Weimar Articles'). The statue was erected in 1961 to mark his fifty-second birthday.

WHERE

Historical Houses in Weimar



Goethe's Home

This Citizen's House was built in 1709 in the Baroque style. The poet planned the form and furnishing of the rooms as well as its rich collections, e.g. in the Juno Room.

[read more](#)

April-September
Tue-Sun: 9am-6pm
Sat: 9am-6pm



Goethe's Garden House

Bought for Goethe by the Duke, the poet lived here until moving to the house on Frauerberg. A place of refuge for Goethe, after his death it became a shrine for his admirers.

[read more](#)



Schiller's Home

Friedrich Schiller spent the last three years of his life in this townhouse on the former Vödingers Esplanade. Still containing part of the original furnishings, it reflects the style prevalent in Schiller's day.

[read more](#)

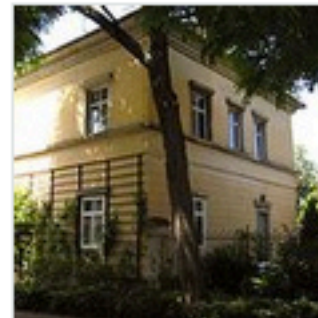


Wittumspalais

After a fire in the town palace, the Palace was turned into the dowager residence of Duchess Anna Amalia. The two-winged building is an important document of noble [interior design](#) in Weimar.

[read more](#)

on Monday

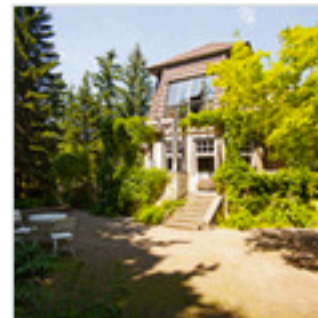


Liszt's Home

In the summer months from 1869 until 1886, Franz Liszt stayed in the former Court Market Garden at the entrance to the park and gave piano lessons to his international students.

[read more](#)

April to 15 October
2012: 10am - 6pm **16 October to 31 March**
2012: Sat & Sun 10am - 4pm Closed on Monday



House "Hohe Pappeln"

Henry van de Velde, a Belgian architect and designer who was art adviser to the Grand Duchy, devised and built this country house for his family once it had grown to seven people.

[read more](#)

April - October Tue - Sun, 1pm - 6pm

Closed on Monday



Nietzsche Archive

A sick Friedrich Nietzsche spent the last seven years of his life at Villa Silberblick. The Nietzsche Archives were established here by his sister. The house became the shrine of the Nietzsche community.

[read more](#)

April to October

Tuesday to Sunday
13.00 - 18.00 Closed on Monday
Closed from November to March

PREVIOUS WORKS



<https://vimeo.com/43738979>

INSPIRATIONS//A BLOG

URBANINTERVENTIONS



a visual archive for architectural provocations class // Bauhaus 2012



The Masters

— 1 minute ago

#berlin #christo #jeanne cladue #wrapping
#reichstag



"A contrast is created between the fragility of the fabric and the solidity of the Portland stone. Responding to the vocabulary of representative architecture, this weightless gesture references both a neoclassical and a contemporary pop-up aesthetic."

Year Created: 2012



http://www.youtube.com/watch?v=lunN_Hi6EKE

Klimakapseln, Haus Rucker Co, Wien, 1962

(Source: [idontlikeair-conditioners](#))

— 40 minutes ago with 1 note

he splitted →

— 4 hours ago

#gordon matta-clark #splitting



"THERE WERE MORE CLOSER THE FUTURE THAN WE ARE!"

Image 1: Cube Forest on the Golden Gate, San Francisco, CA, 1972

Image 2: Superstudio, The Continuous Monument: Rockefeller Center, 1969

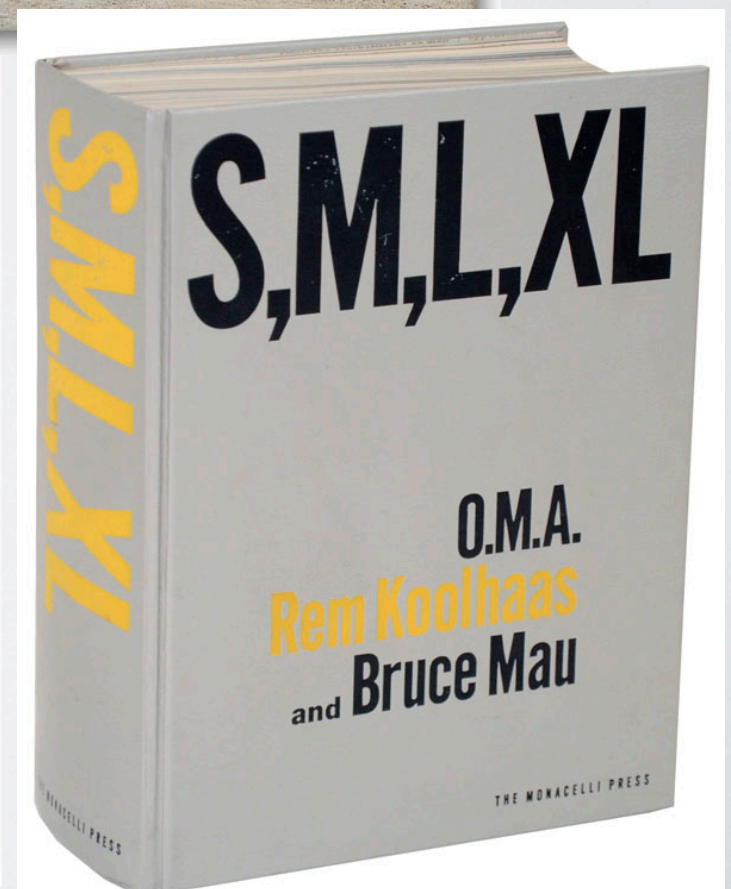
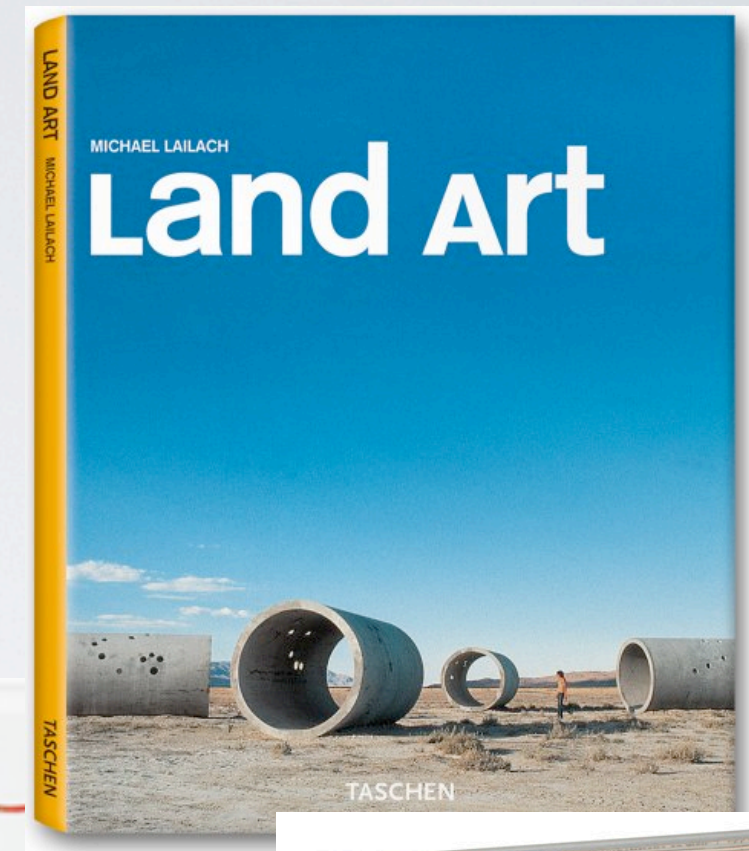
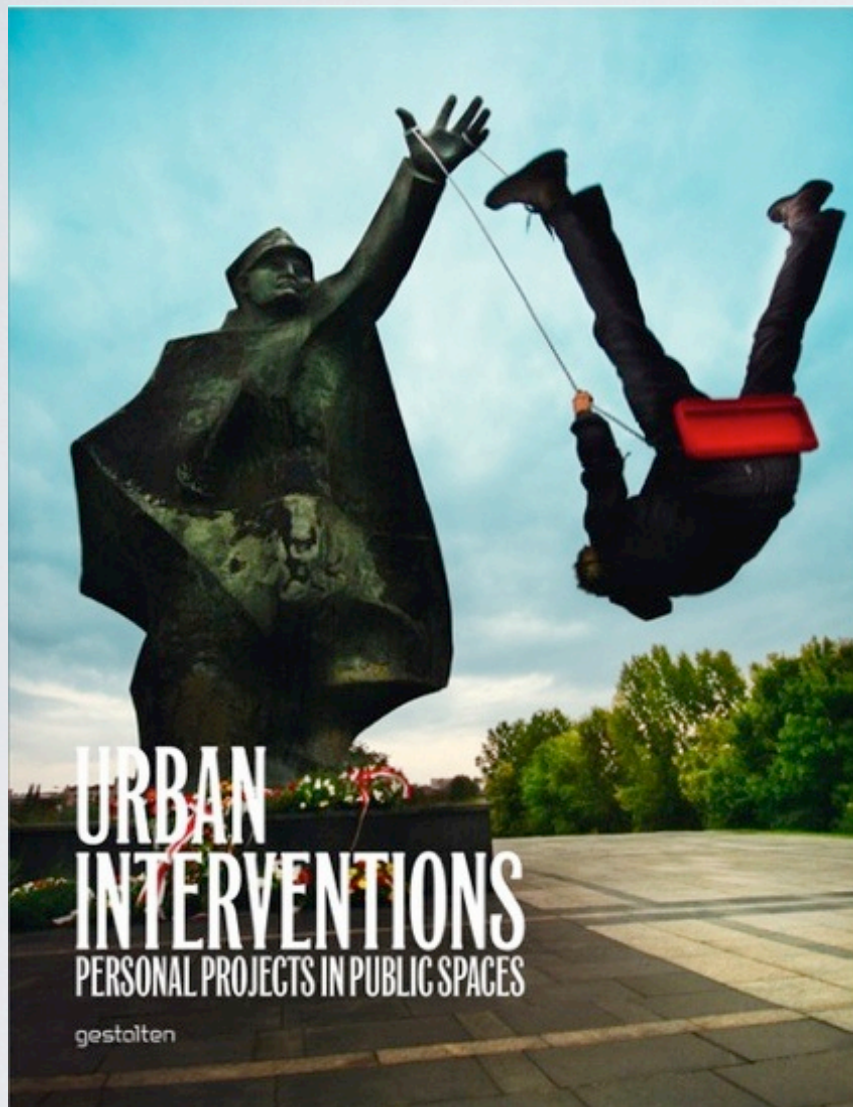
Image 3: The Continuous Monument, An Architectural Model For Total Urbanisation, 1969

— 1 hour ago

#superstudio #italy #architecture #fiction
#dream

<http://architecturalprovocations.tumblr.com>

READINGS



IDEAS

Knitting berets for monuments