

The Recultivation of Potash
Mining Dumps
• (Audiowalk) •



Roßleben - Sondershausen - Bleicherode - Bischofferode - Sollstedt - Menteroda



2020



2018



2015



2009-2014



2008



2000



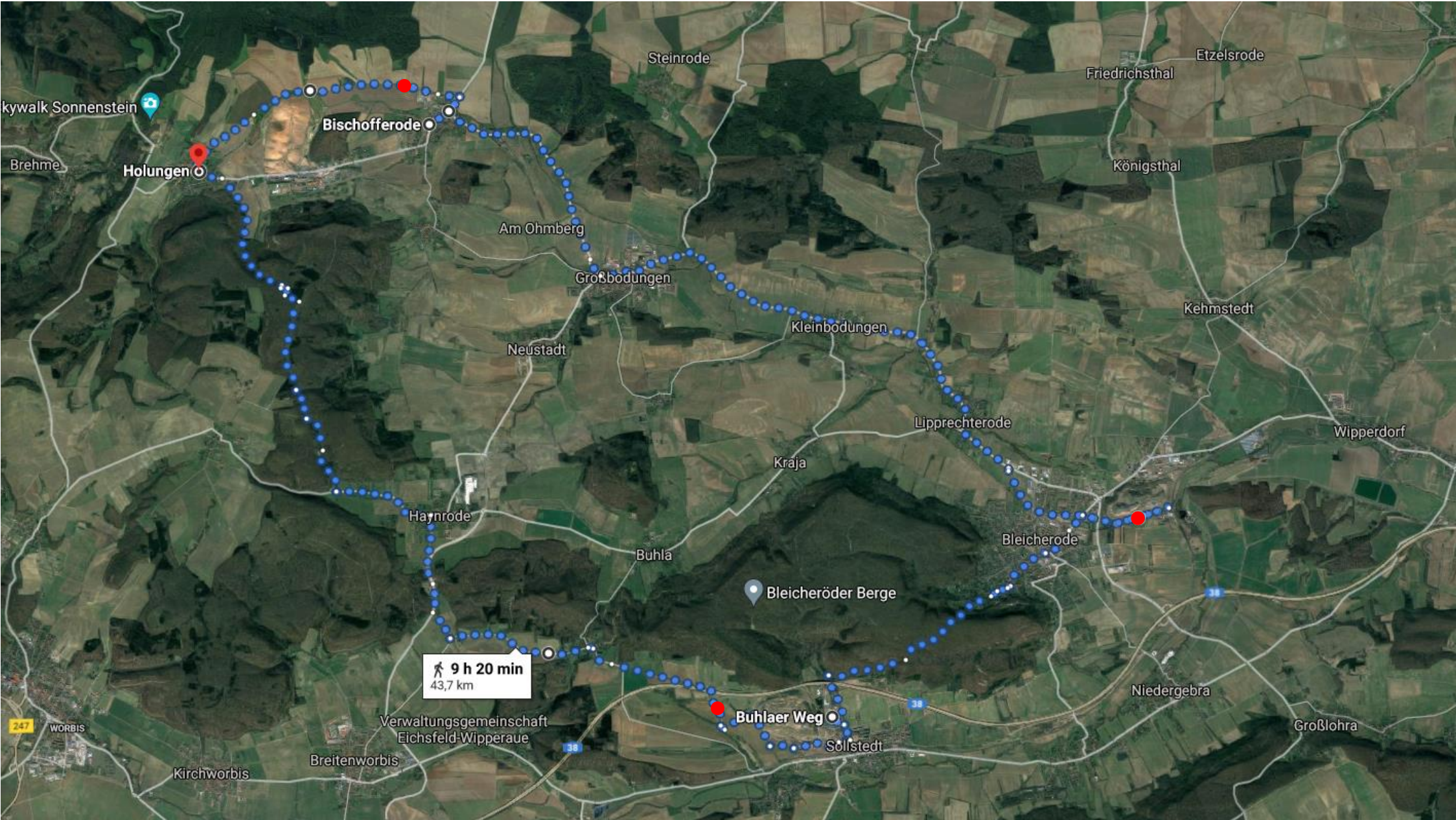
1985



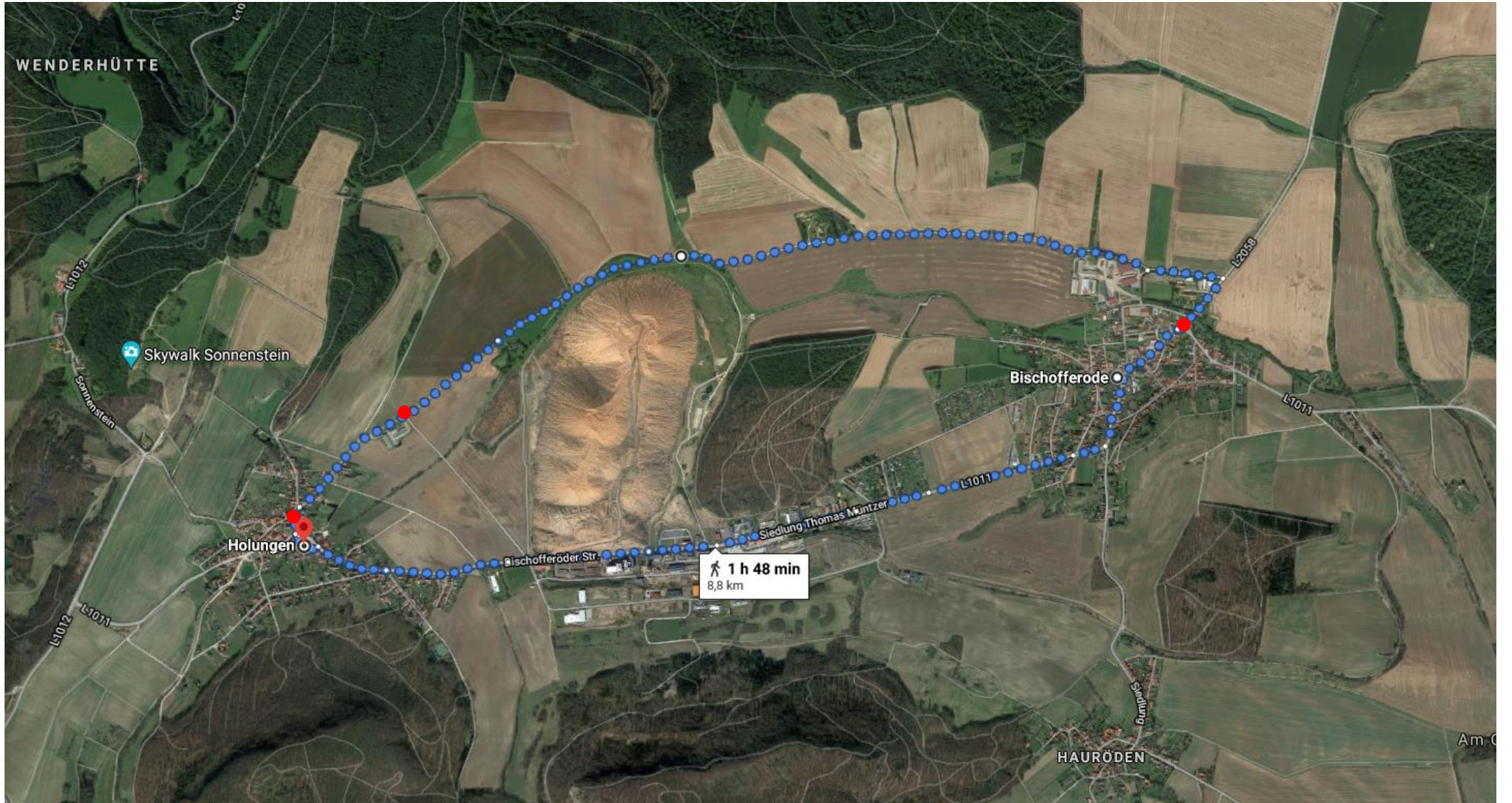
Roßleben



Holungen - Bischofferode - Bleicherode - Sollstedt



Holungen - Bischofferode





I think that I want to focus on one pot ash dump, instead of many, to focus on the certain aspects of the particular dump and go more into depths of how it is perceived. Its history, how far it is along in its recultivation process, how is it dealt with, or it can be dealt with, what affects it has on its surroundings and people, its position in the landscape and its future.

