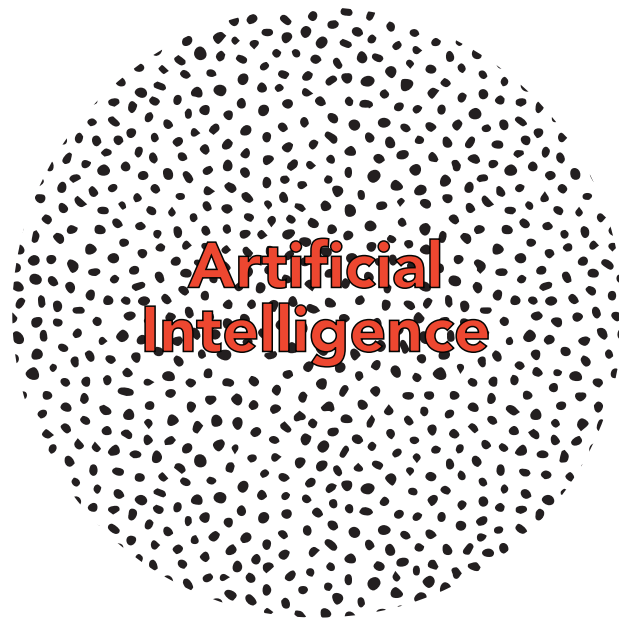


# Artists Lab IV

Sevgin Basari  
SoSe 2020

*07/07/20*



**AttnGAN**  
by Microsoft

Turn text descriptions of scenes to synthesized images.

**BigGAN**  
by DeepMind

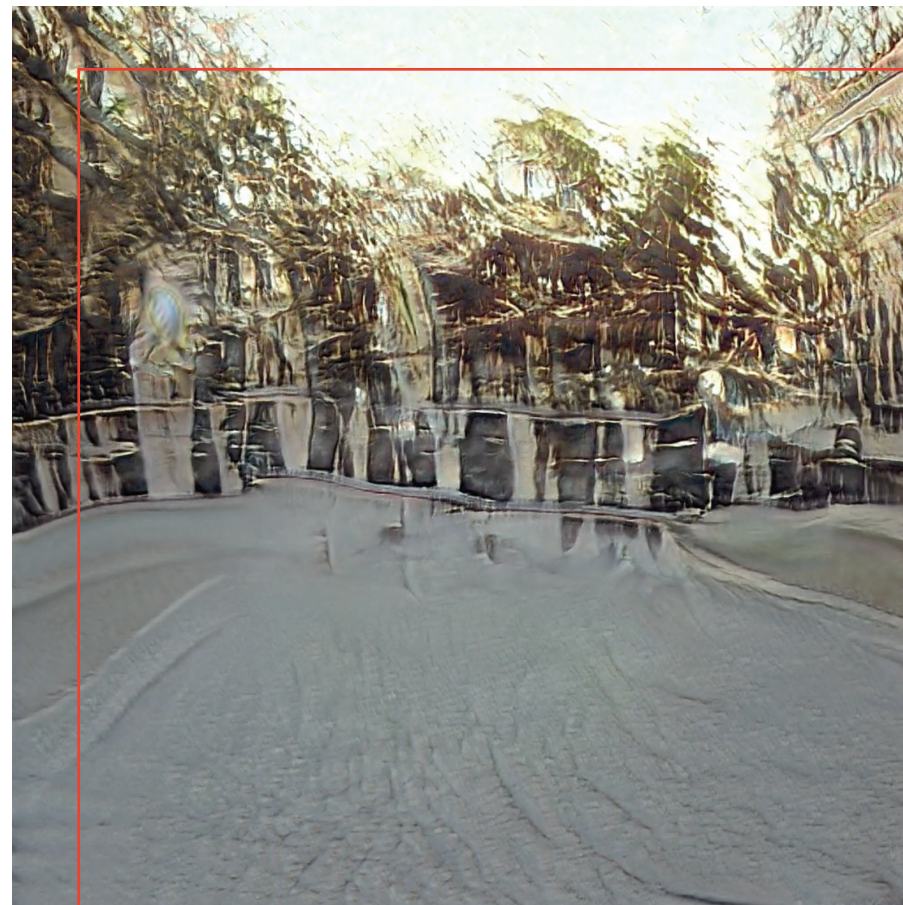
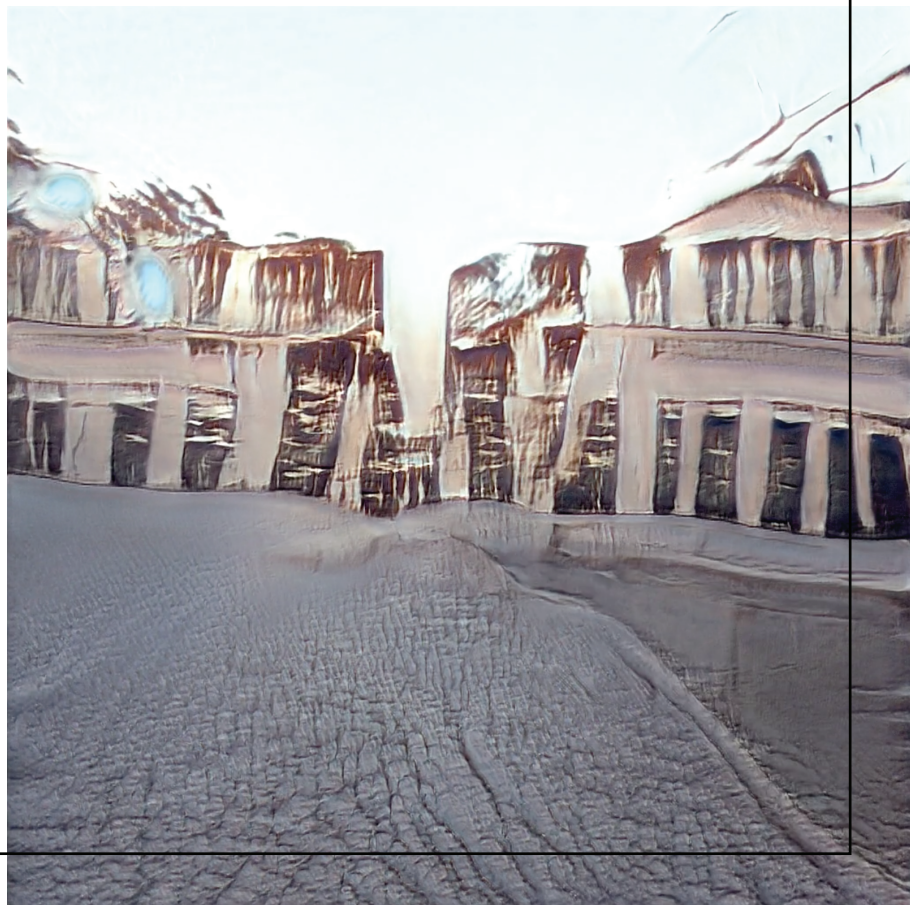
Generate images from 1,000 different categories.

**Fast Style Transfer**  
by Justin Johnson

Stylize images in the style of famous painters.

**StyleGAN**  
by NVIDIA

Generate photorealistic images of faces, landscapes, and more.





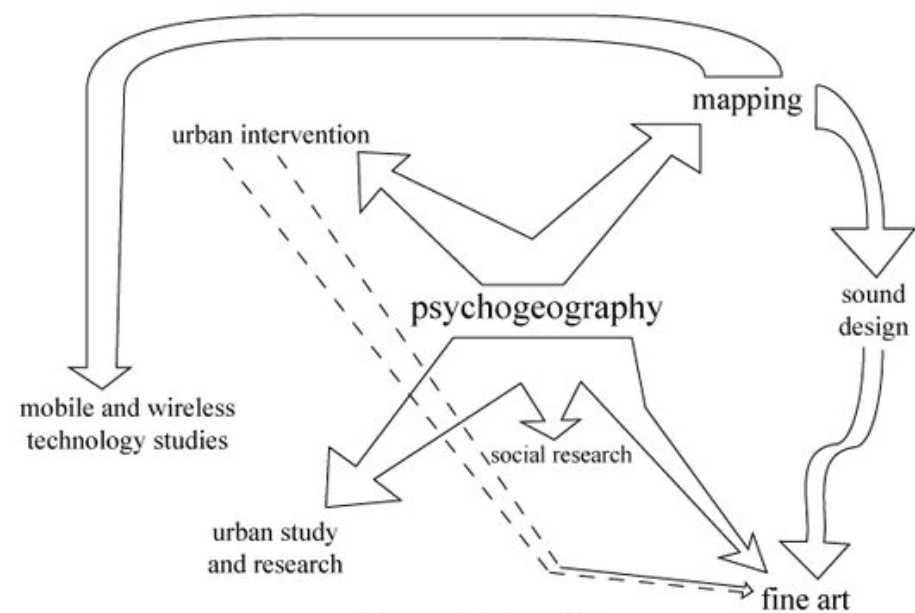
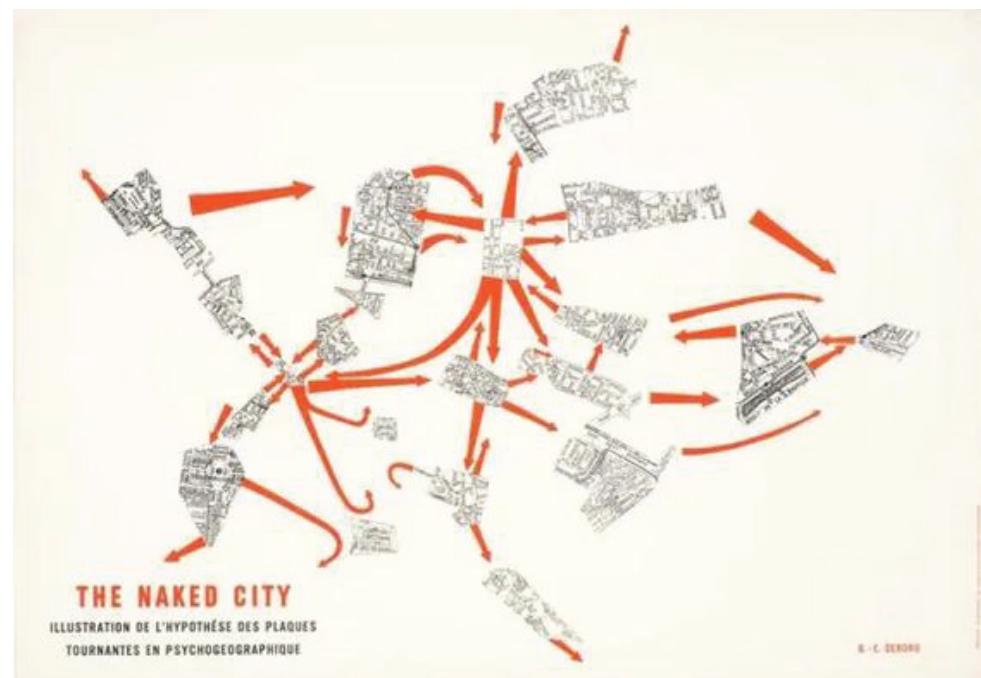
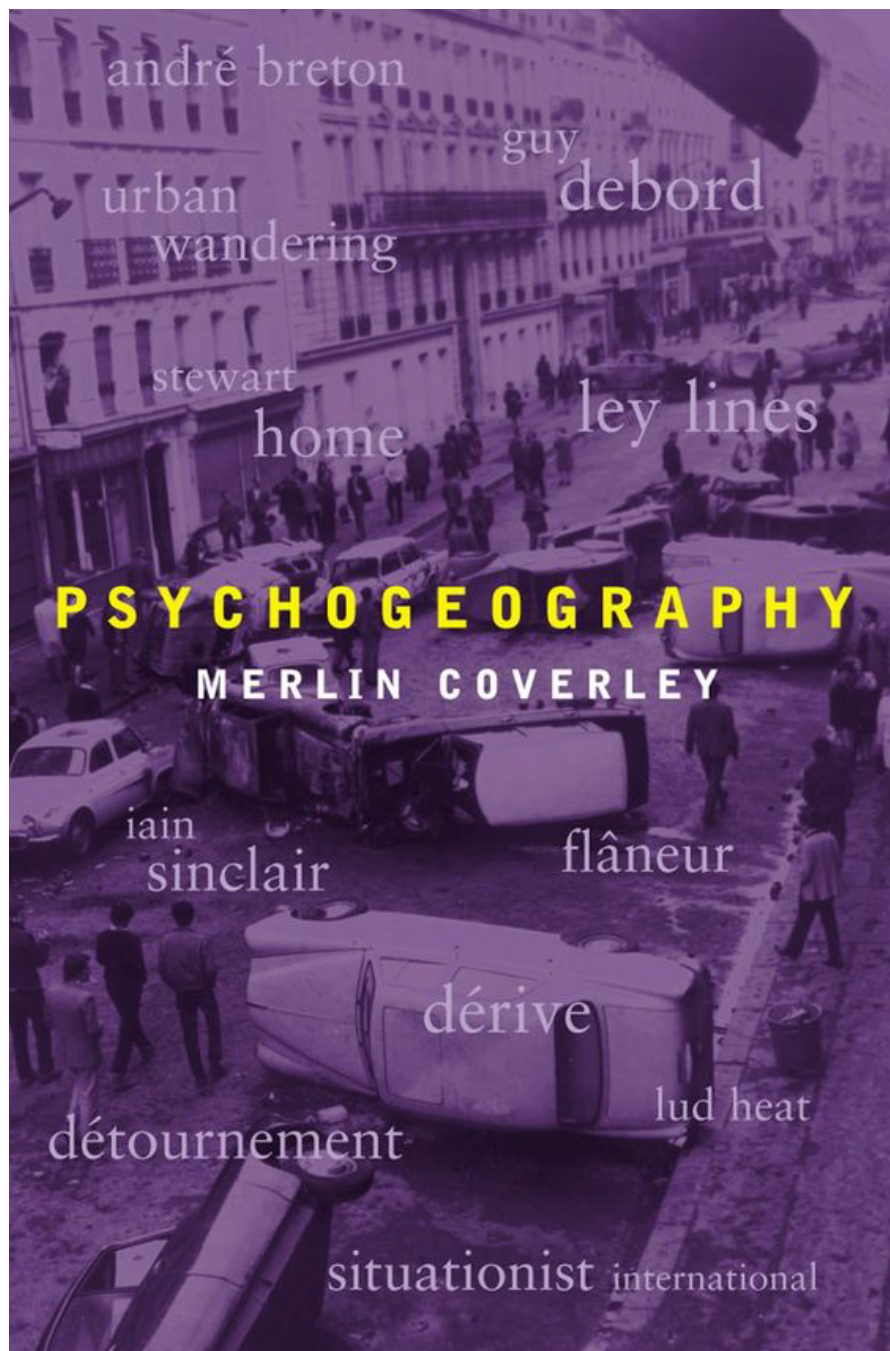


Figure 1 - Domains



## 'psychogeography

*geographical environment on the emotions  
and behaviour of individuals*

## 'DÉRIVE

*Experimental behaviour  
linked to the conditions of urban society  
(specific period of continuous deriving)*

## 'Situationist

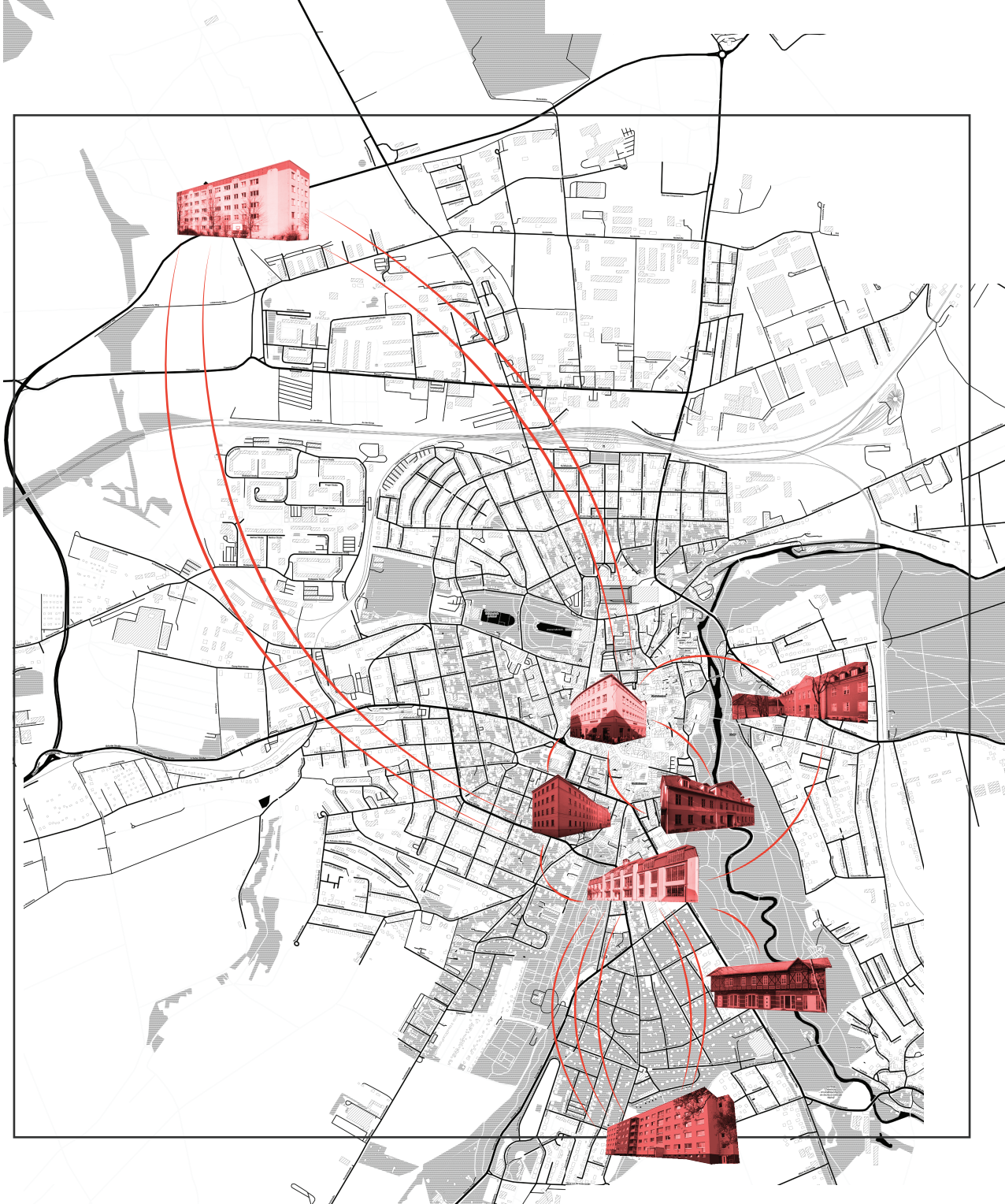
*Activity of constructing situations*

## 'UNITARY URBANISM

*Integral construction of a milieu in dynamic  
relation with the experiments in behaviour*



- 1 Am Herrenrödchen 1
- 2 Amalienstraße 3
- 3 Belveder Ale 21
- 4 Leibnizallee 10
- 5 Marienstraße 4
- 6 Merketalstraße 48
- 7 Schützengasse 2
- 8 Das Hauptgebäude



- *the multi-layered perception of the city by different groups*
- *Different Routes*
- *Journeys with intent*





*Walking*



*Biking*



*Taking bus*

## Hinges of correlation: Spatial devices of social coexistence

*Espen Lunde Nielsen*

This project investigates the coexistence of and the correlation between the inhabitants within my apartment building, using artistic practices and my own lived experience. These everyday spaces form the primary interface between the individual and the larger social entity of the city. Consciously, or partly unknowingly, one interacts with others through spatial demarcations, using embedded spatial devices (such as squeaking floorboards, peepholes, mailboxes, etc.) that project life and the presence of other people through sound, light, or matter. Most of these devices are partly unintended, often serve other practical functions, and go unnoticed – but nevertheless hold a latent spatial potential for a recalibration of the social dimension of the city and an architecture to come. This exposition features a combination of photography, 3D laser scans, and creative writing, followed by a written account of the practice.



## Possible research topics

*(architecture) + (media)*

*Google map routes (walking+biking+bus)*

*Experiences and scenes through the route  
(what they experiencing through the way)*

*Day & Night Situation*

*Generic rooms (same furnitures + self customized)*