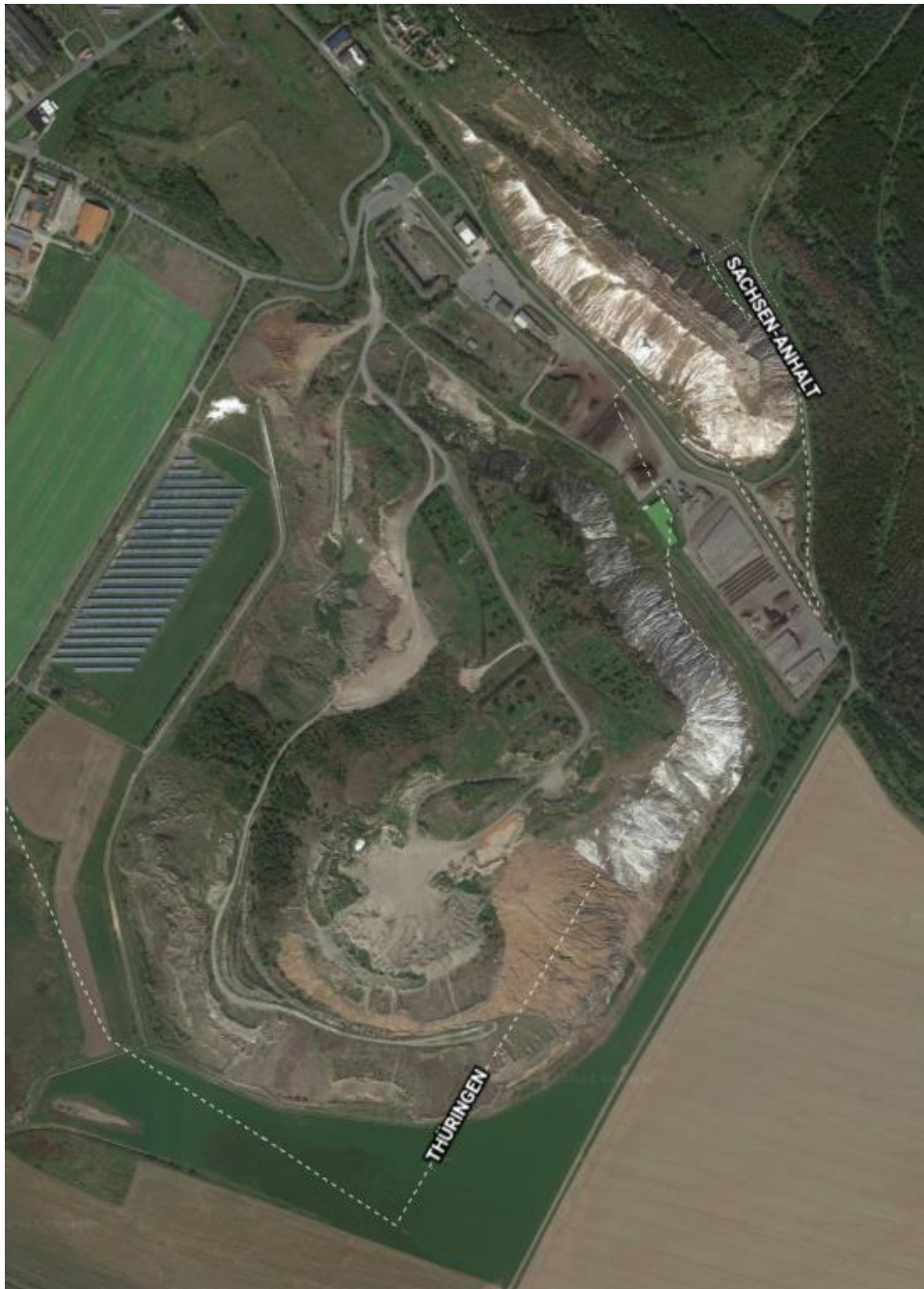




4 h 12 min
272 km

Potash mining dumps in the North of Thuringia



Roßleben

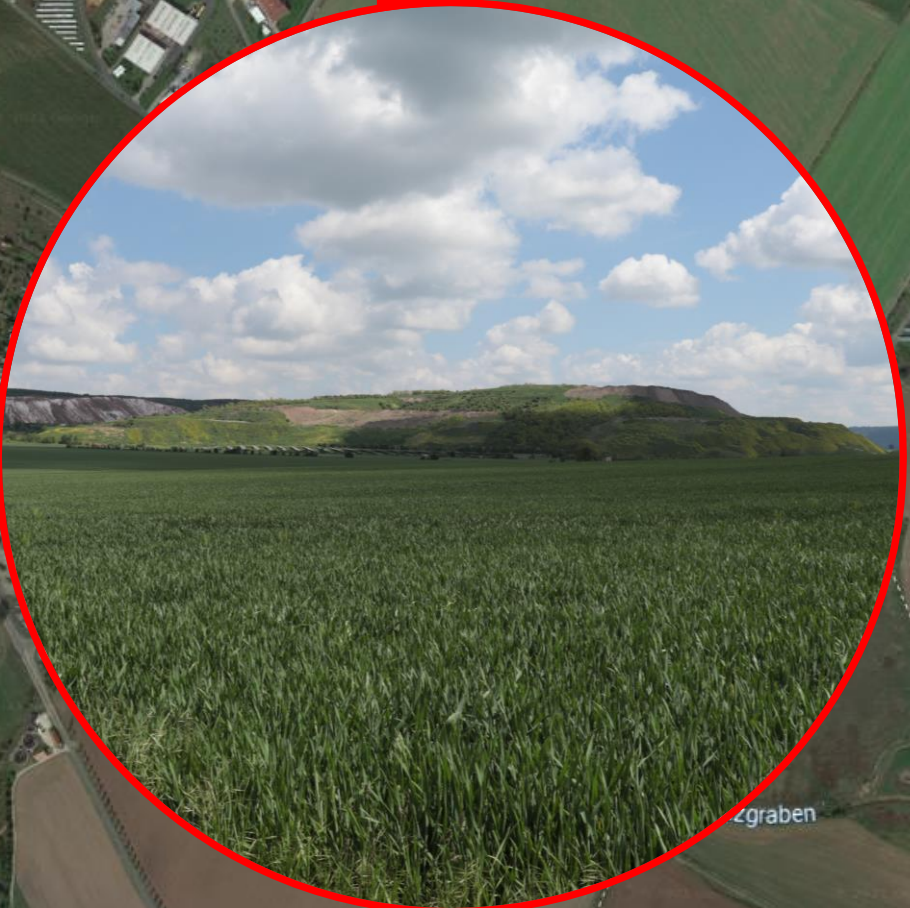
The potash mining dump in Roßleben is quite an odd location because it sits exactly on the border from Thuringia to Saxony-Anhalt. The mining dump is also split into two sections, which is very untypical. How the potash mining dumps are dealt with is also different from state to state. This could be the reason why the smaller dump is completely untouched.



SACHSEN-ANHALT

THÜRINGEN

graben



Bleicherode

The potash mining dump in Bleicherode is interesting because it demonstrates that these locations can also have a use. Here solar panels are built on top of the mining dump.

As a little side note: a small manmade freshwater lake is also located on top this big salt mountain.





Bode

Bode

Bode

Verband
Wipper...



Bischofferode

The potash mining dump in Bischofferode is the only one in Thuringia that I've visited where the recultivation process has not been started. This mining dump has not been touched for 25 years. The only plants that have started to grow here are pioneer plants like birch trees.

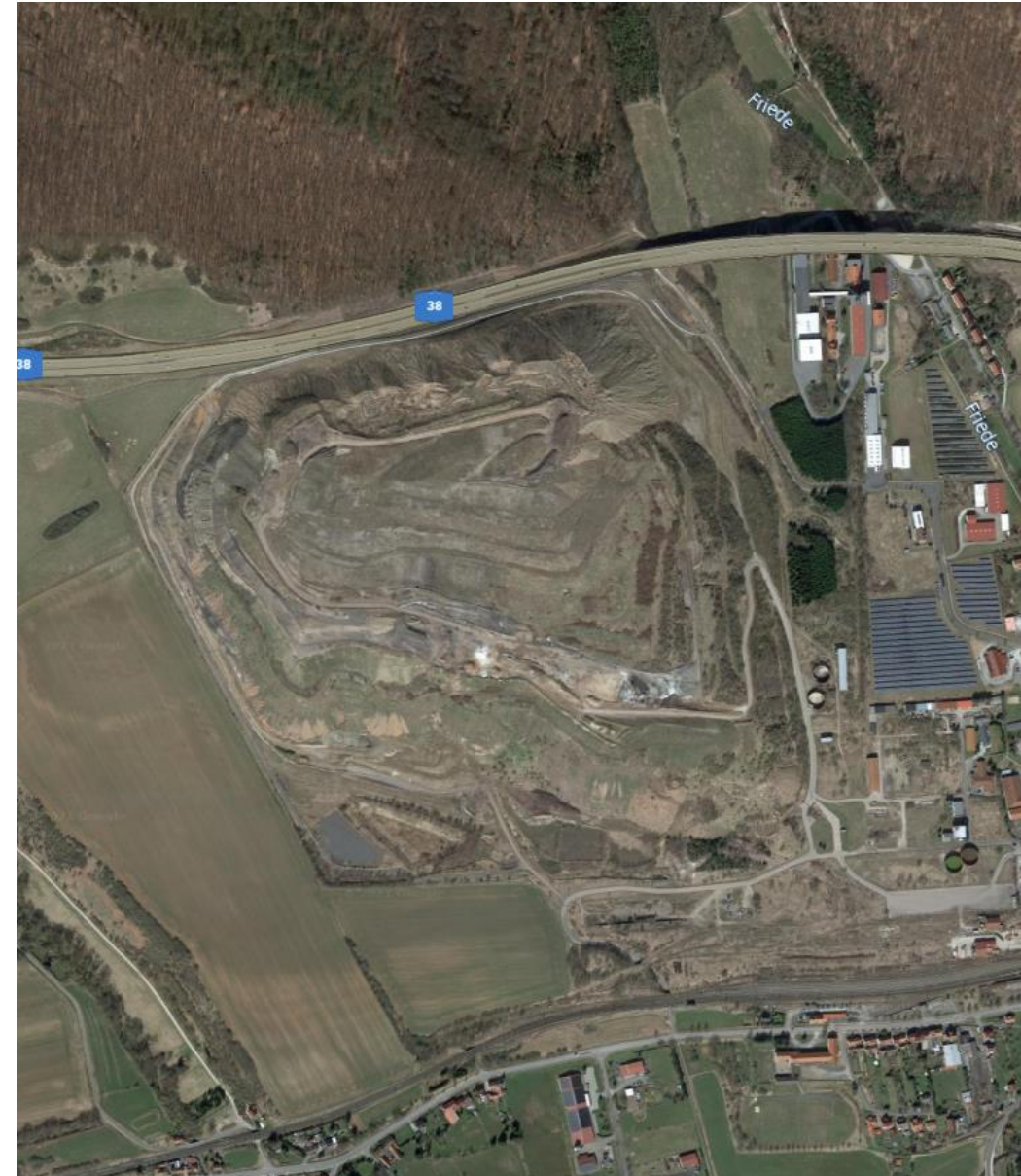






Sollstedt

The potash mining dump is located right next to a freeway (A38). The northern side of the mining dump is very steep. This makes it difficult for plants to grow there. Normally the area would be flattened out or covered more but because of how close the dump is to the freeway this becomes a hard task.





Menteroda

The potash mining dump in Menteroda is the most advanced dump in Thuringia. It's estimated to be completely recultivated in 2025. The mining dump is mostly revegetated but in comparison to the other locations, the dump has way less trees and bushes growing on it.



