

Topographie der Moderne | The topography of modernism

Mariana Sanchez Artola

App Features:

Download: <https://play.google.com/store/apps/details?id=de.mad.tdm>

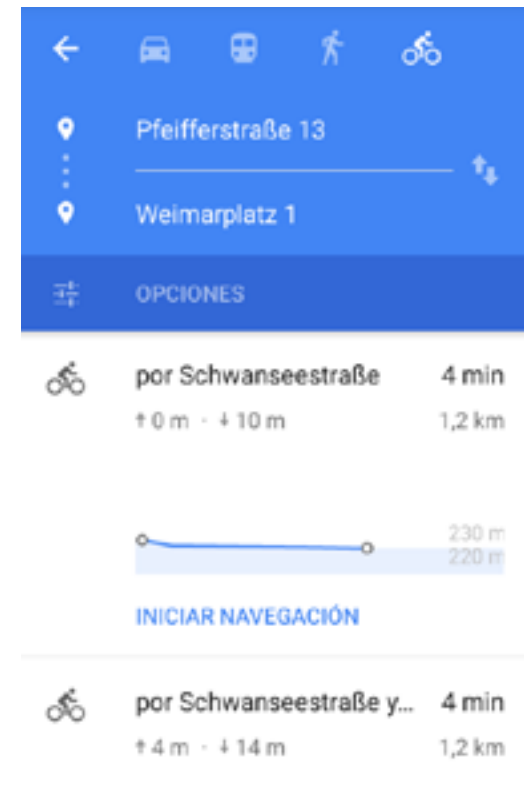
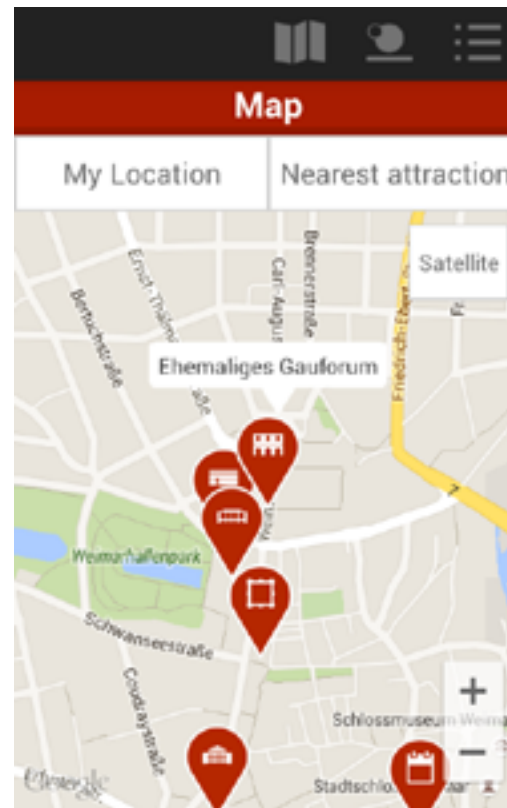
Map	Map GPS	Map Static	AR	Photos	Articles	Share	Audio	Video	Nearby	Links	Tours	Games
X	X	X		X	X		X	X	X	X		

Description

Due to the fact that the app is for Weimar I could test it “on the fields”. The design of it is pretty clear, I would suggest working with more margins and shorter texts but all in all the design is attractive and functional.

To start using it I chose an attraction near my place. The app offers one map that you can use without internet but if you want to know how to get to places it opens a new map in Google maps so you need internet for that.

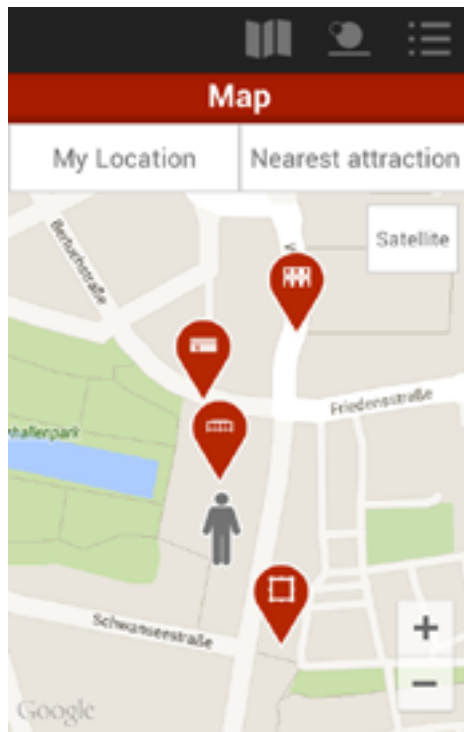
It also has a feedback and the phone vibrates when you reach the attraction you selected. It is useful because if you are riding a bike or walking you can know when you arrive without looking at the phone.



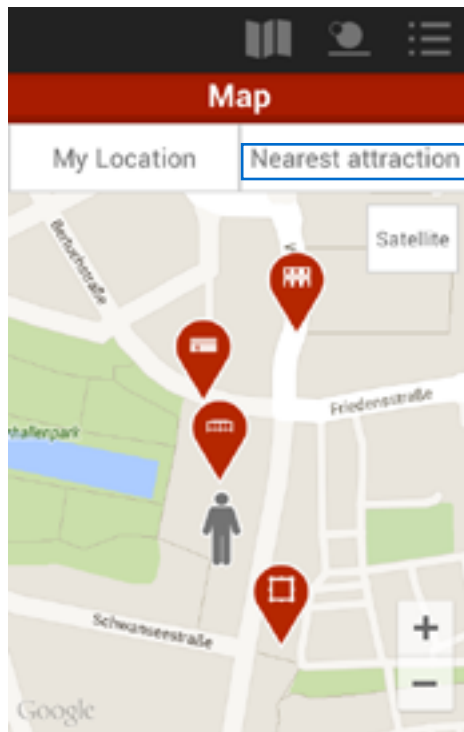
When you get to your destination you can listen to an audio, read some texts and also see some old pictures that reflects the story of the place.

The language of the app is in English, which is good for tourism, but it would be better if they offered different languages. the audios are short and clear.

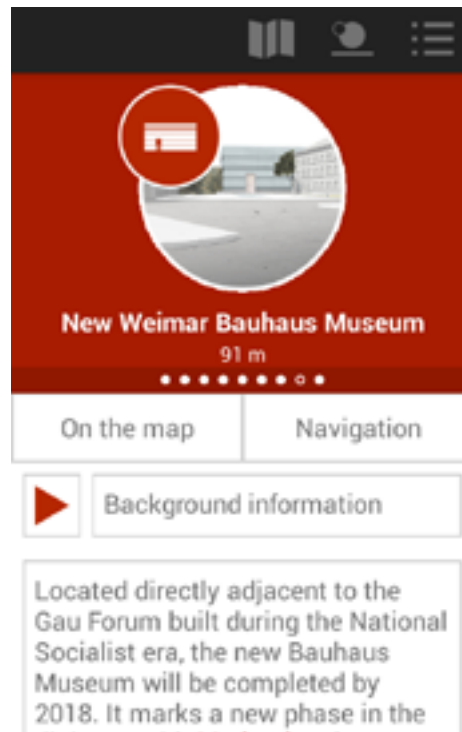
At the bottom it offers a timeline and the user can select different years and it opens a new window with a short text explaining what happened there in that year.



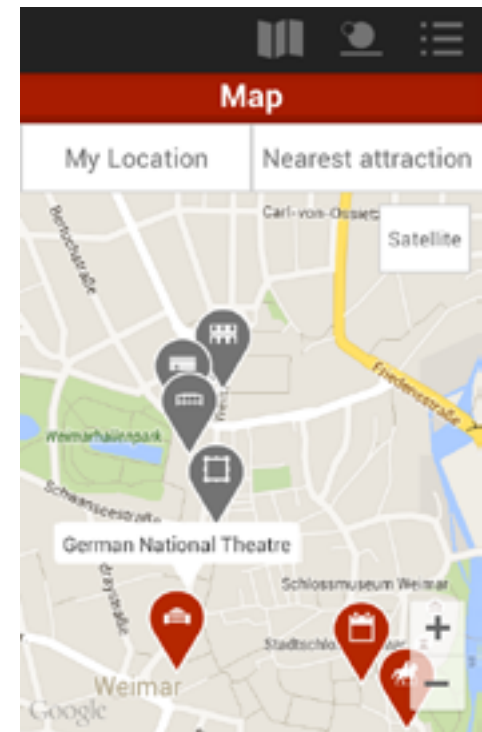
After visiting the attraction the user can select the one that is nearest, For me, this option didn't work, so (s)he have to see in the map for choosing the next place to visit.



One problem that I found is that it shows the New Bauhaus Museum for visiting, but the place is not built yet and the app is not very clear about it, it should say that its not ready to visit.



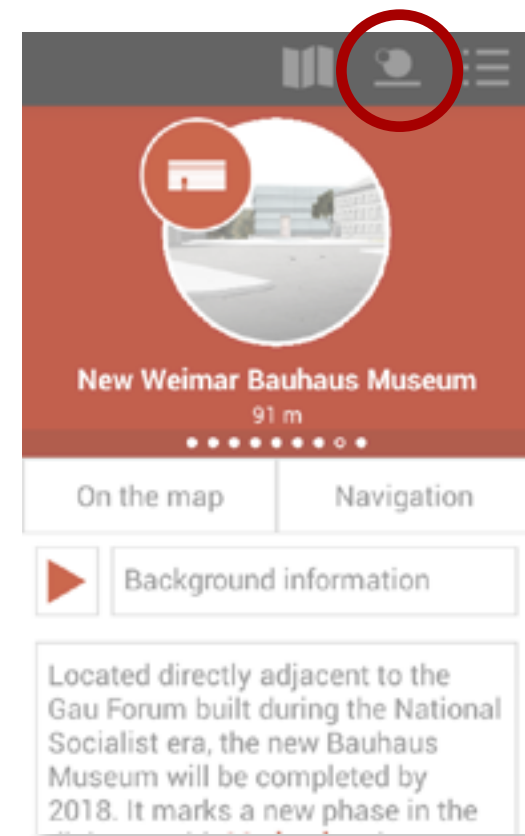
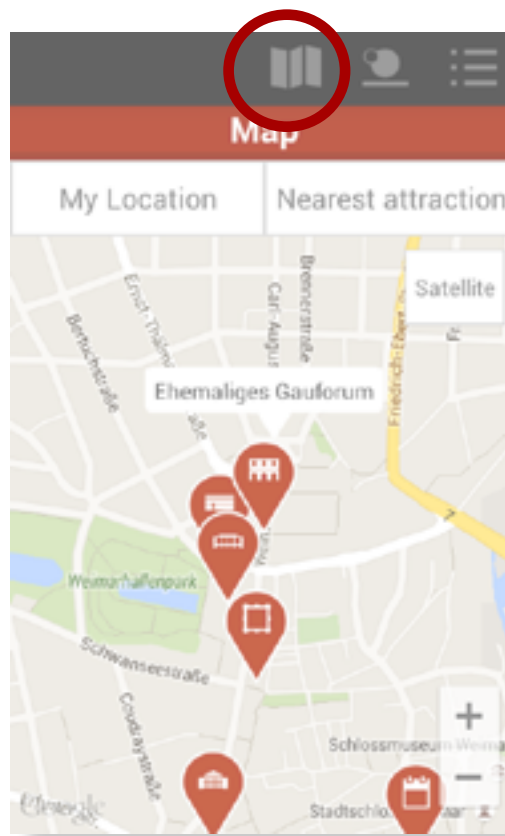
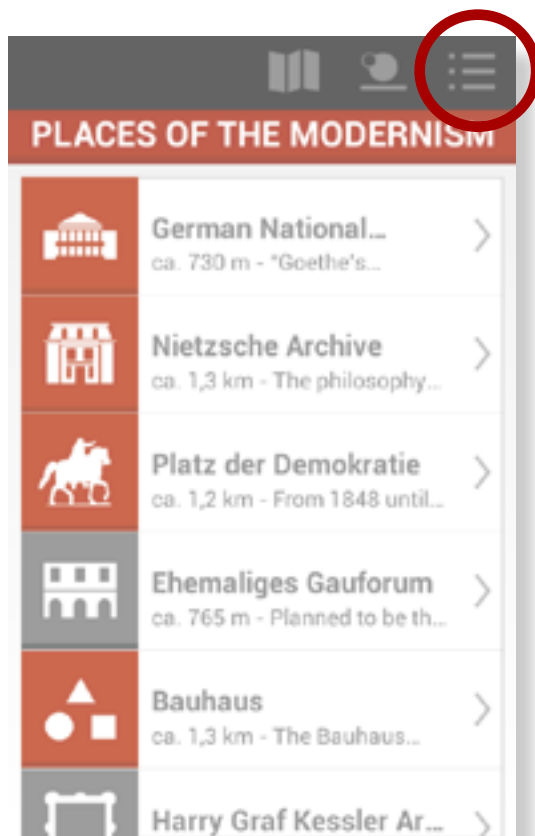
The map does not show the trajectory that the user did but it differentiates the places that (s) he has already visited. In the map the icons are pretty clear and the color palette is well used.



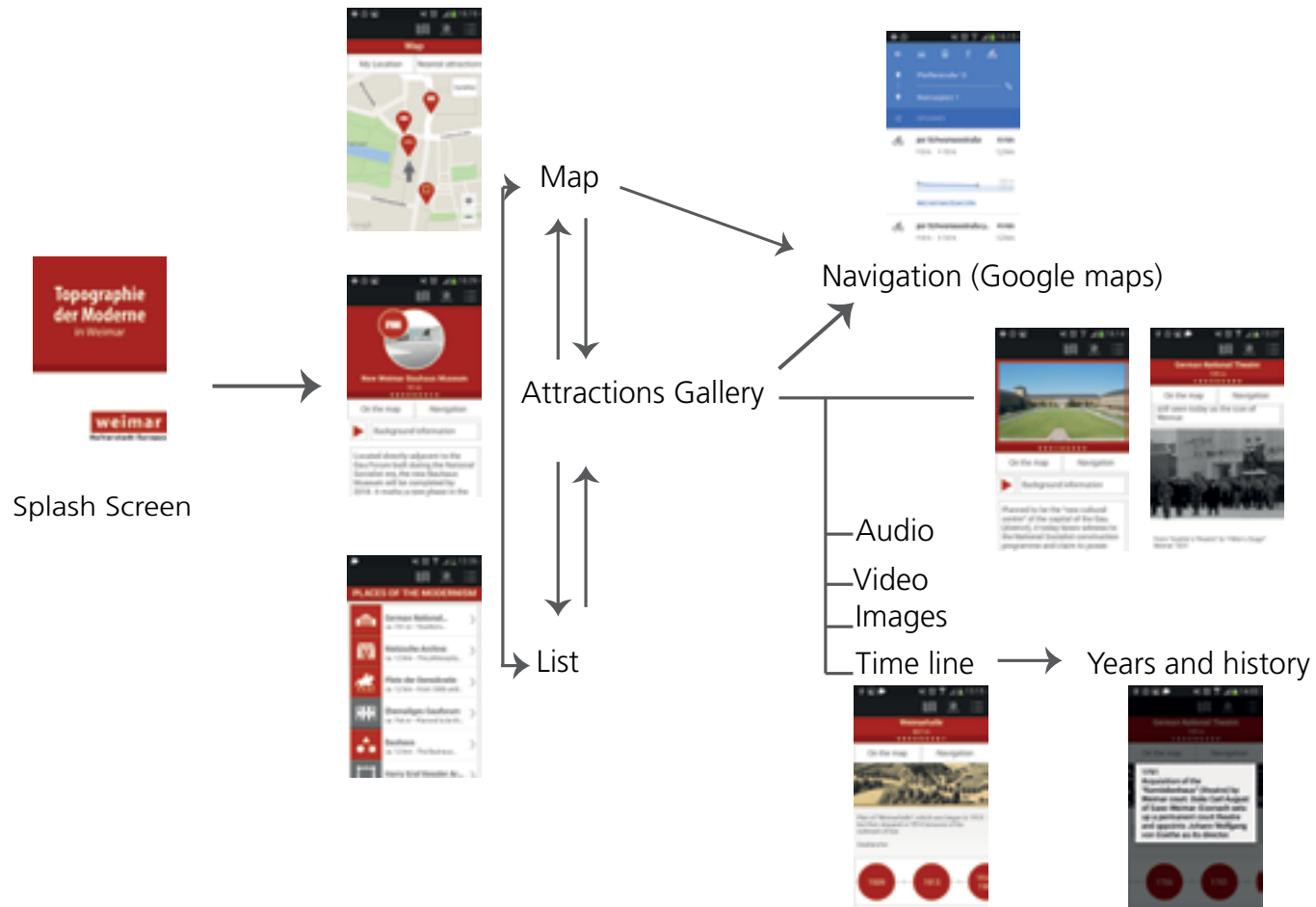
The tab bar for the app is simple, you have three buttons with three options, a list of places, a map with the places and a gallery.

I consider that its clear but maybe the position is not the best one, maybe it would be easier if they were in the bottom of the page.

The attractions gallery is not very clear, the icons chosen maybe indicates that you can change pictures but actually it changes places.



Flow map



Conclusion

All in all the app is well designed and easy to use. The layout is simple and does not provide many elements and the one it has are presented in a nice and clear way.

The icons that represent the different attractions are really simple and helps the user to identify easily the different places.

The area where it presents more errors, or more things that could be better is in the gallery. First of all the way to move between the attractions it's a little bit confusing, and uses a resource that is more suitable for web pages than apps. The icon used for the audio is a little bit confusing, because it's a play button, and it's also used for the videos, it could be more differentiated and maybe have an headphones icon.

I really liked the timeline, I think that it's a really nice way to represent and narrate the story but I think that the place where it is is not convenient because it's really hard to reach to it.

Also in the gallery some of the attractions are shown with a video and some of them with just a pictures so I think in this case it shows a lack of consistency.

The texts are maybe a little bit too long and they have a frame that does not help with anything. I would remove this frames and the layout would look more clear and with more air.

All in all I think that the design of the app is really nice, it has a little bit Google looks and feel, but it's simple and easy to use. The typography used are readable, the color palette is nice too and also respond to this modernist design. I really enjoyed using it and leaning the tow where I live now.