

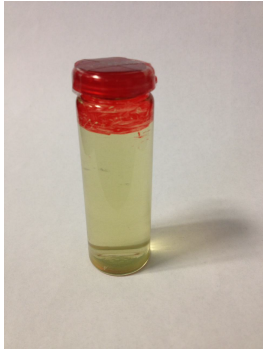
# Experiment 1 16.5.-17.5.

## Setup

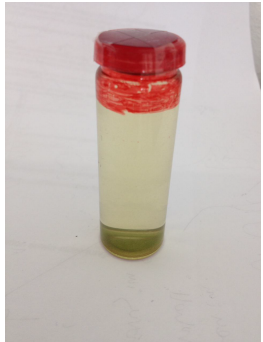
ca 24hrs overnight  
LED on / on bottom

## Question

Will Euglena swim to the  
bottom?



Start condition



## Result

The bottom part has become a lot  
more green



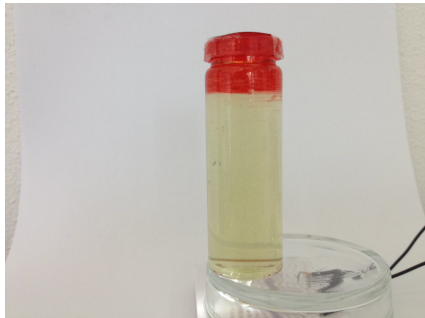
## Experiment 2 17.5.

### Setup

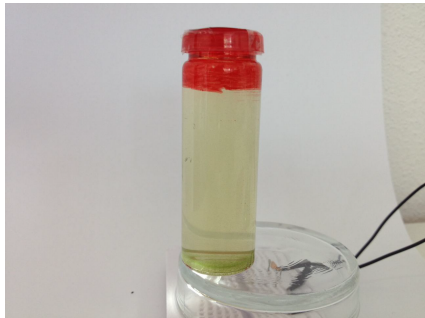
11.30 - 12.30  
LED on / on bottom

### Question

Development in 1 hour?



Start condition 11.20



Result 12.30

The bottom part has become more green

Is this only algae or/and due to gravity?

## Experiment 3 17.5.-18.5.

### Setup

Over night (ca. 24hrs)  
LED on / on top

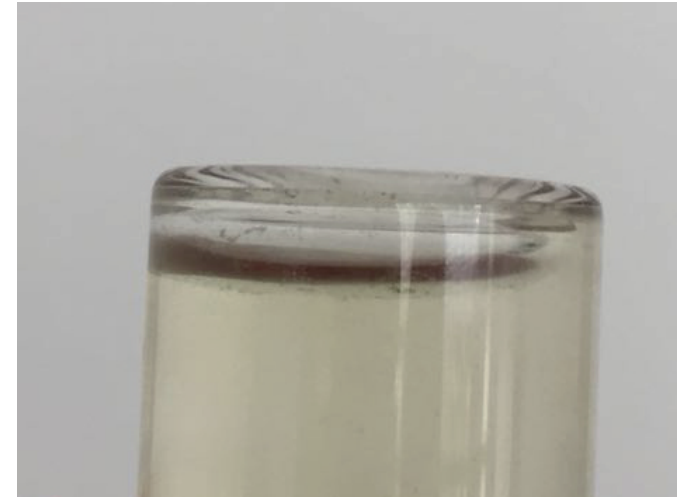


### Question

Will the euglena swim to the top ?  
Gravity vs Light?

### Result

Something green is visible on top  
overall water = light green  
bigger green particles have floated to the bottom





# Bilanz after 3 Experiments

Did they die in 3 days without new oxygen?

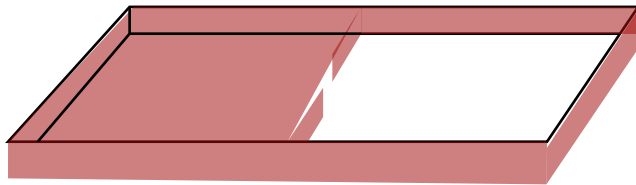
Colour of the glass when shaken less green than in the start

Following questions:

How much oxygen do they need?  
Can they die from a too high light intensity?

Next step

Test if they are still alive?



No gravity involved  
barrier in the middle