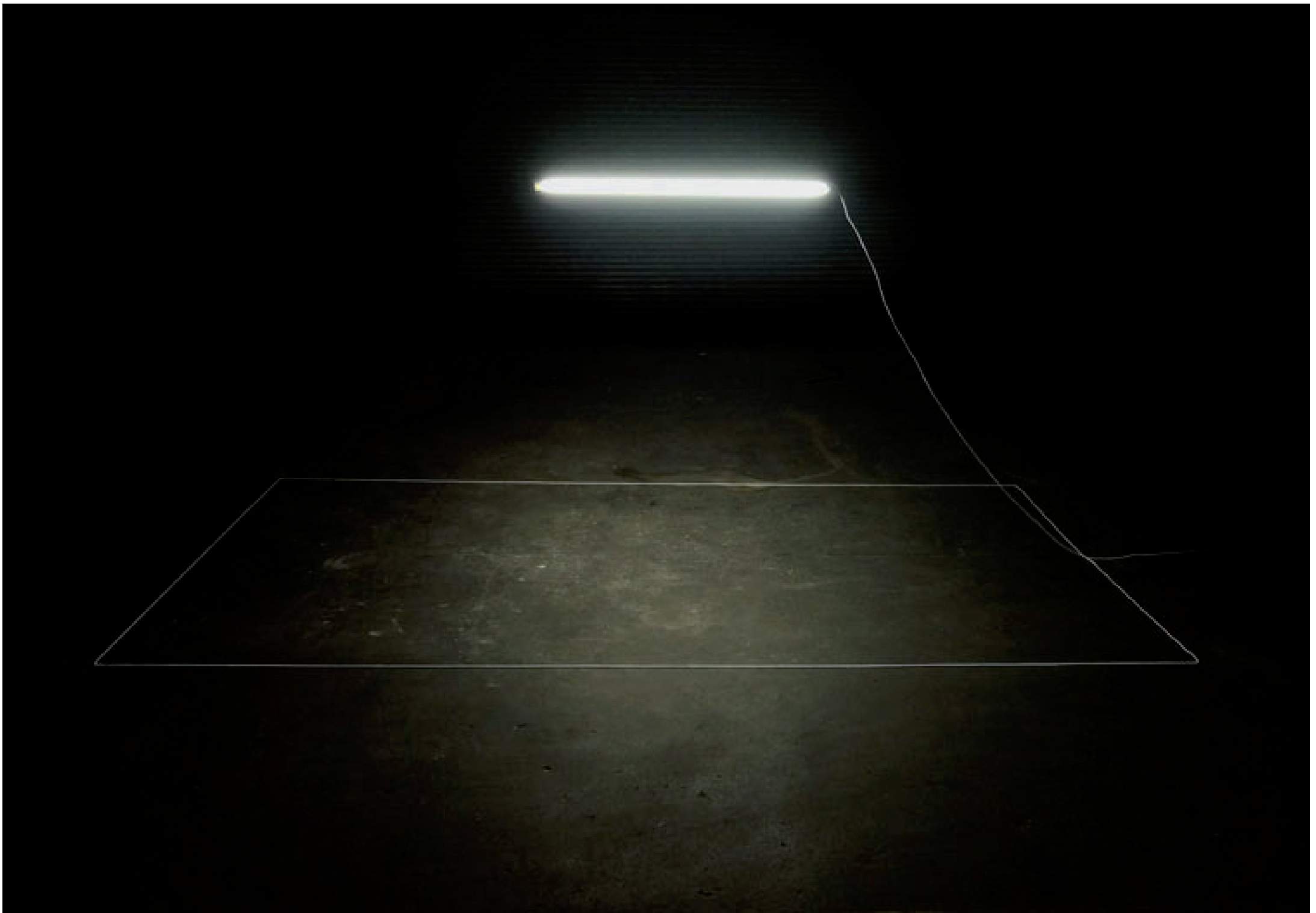


AMEL ALI-BEY

provocative architecture

2013



## UNTITLED I

Mixed Media Installation

2013

Material:

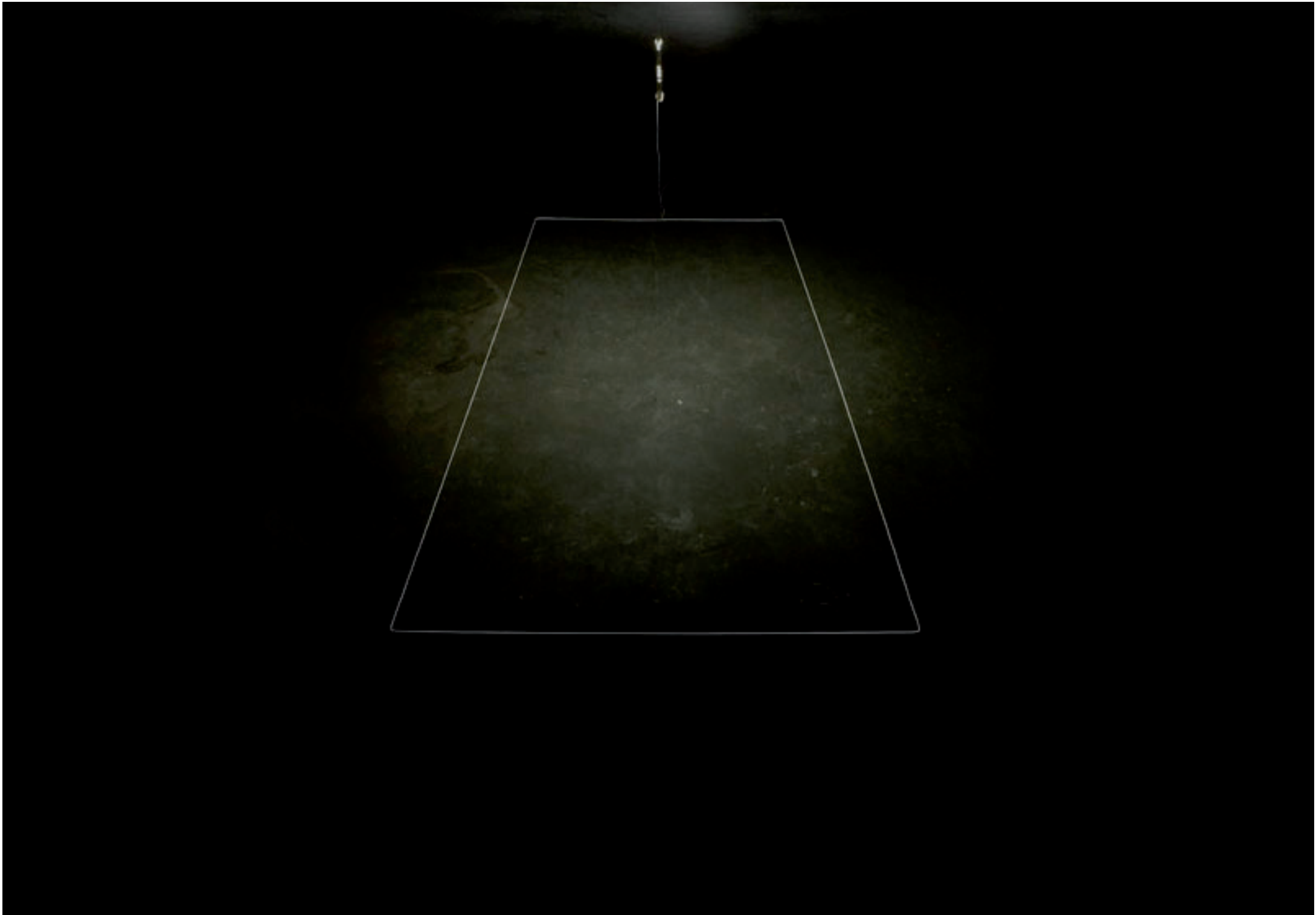
1.58 m fluorescent light

30 m cord (Rectangle: 5x2.5 m standard for parking  
space in Germany)

220 V energy

transparent thread

hooks



## UNTITLED II

Mixed Media Installation

2013

Material:

1.58 m fluorescent light

30 m cord (Rectangle: 5x2.5 m standard for parking  
space in Germany)

220 V energy

transparent thread

hooks





# PRIVATE

[Exhibited in context of a group exhibition "Adieu Marie"  
in Marienstrasse 2, Weimar. Between the 17-19.12.2012]  
Mixed Media Installation

Short description:

Transitory places such as parking lots, malls and train stations are defined by their functionality. Living in an urban environment we become familiar with these artificial places in our daily lives. We can read the monotonous and repetitive structures of supermarkets or the temporary signifiers and iconography of public transportation. These non-places can become even more usual for us than natural spaces as untouched landscapes mostly in accordance with standardizations of size, light, smell, sound and interaction. What happens if you create one of these places in a private house? How does it feel? Here we enter a room that seems to be speaking the language of public spaces, although it's a private house. Especially in context of private parking spaces of public places, this installation creates a paradox situation.

The floor is a build with materials, that seem like tar. The beholder is the unknown participant, because he accomplishes the work. The installation took place in an old house in the center of Weimar, Germany. The installation got destroyed after three days of exhibition, because the house got renovated.





# PRIVATE

Material:

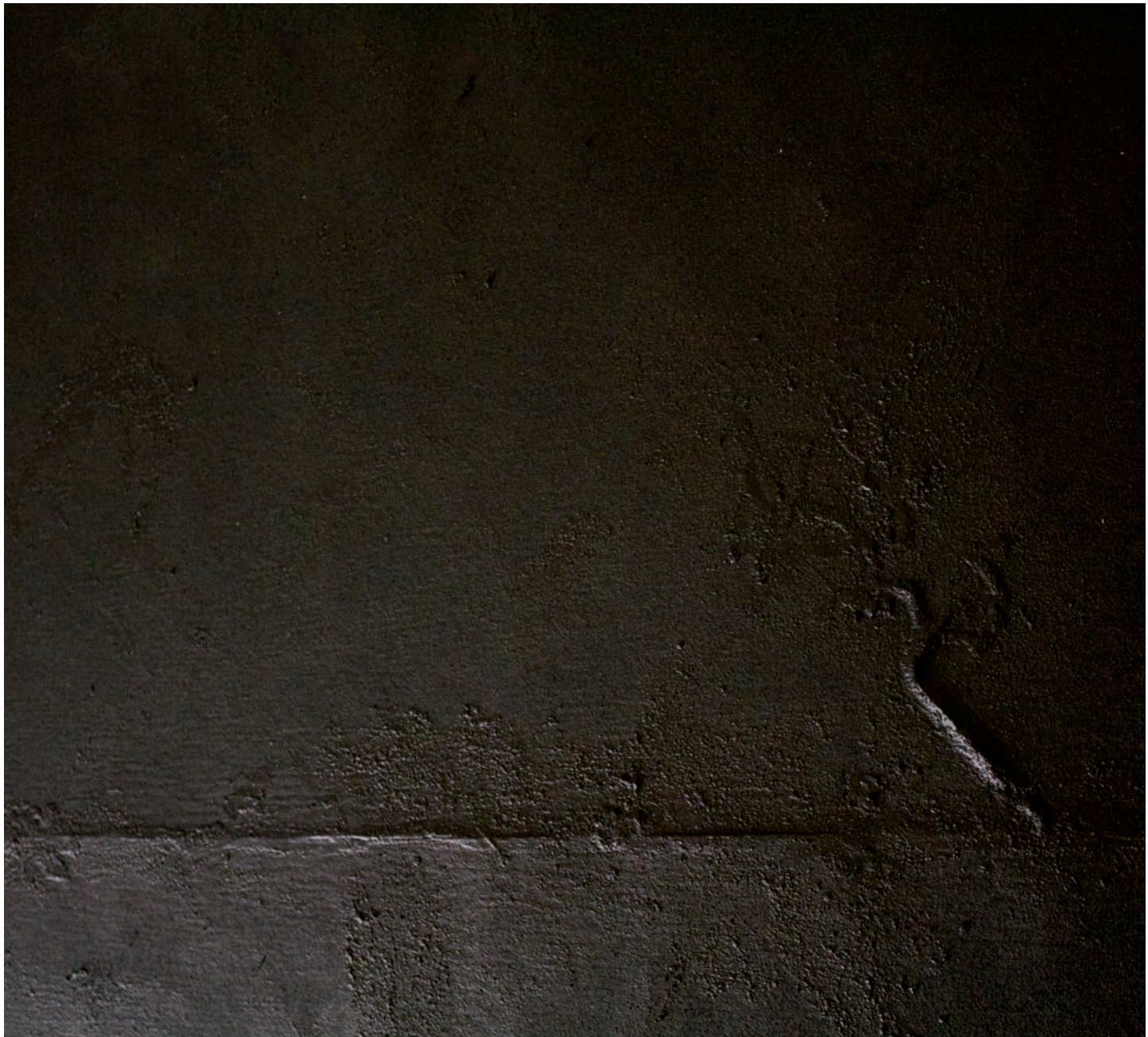
17 m<sup>2</sup>

acrylic on roof card board

sign: Card board and tape

fluorescent light 120 cm

220 V energy



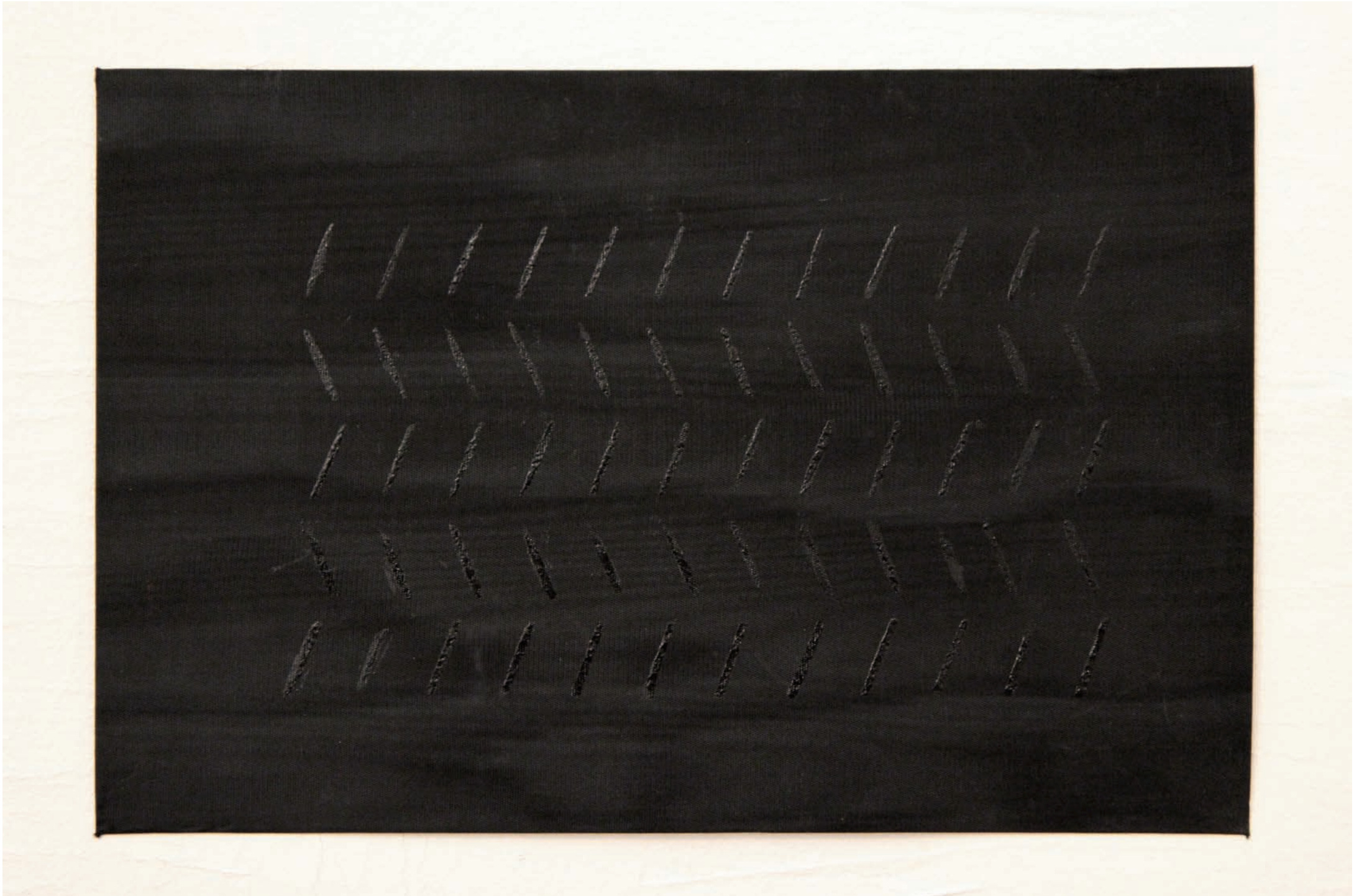


# PARKING LOT STUDIES

2012

Short description:

Inspired by repetitive structures of parking lots and parking garages „Parking Lot Studies“ are material studies as well as reflections of my memory. Aesthetic impressions of asphalt, standardization and the fascination of non-places are transformed into organic materials. This is an on-going project.



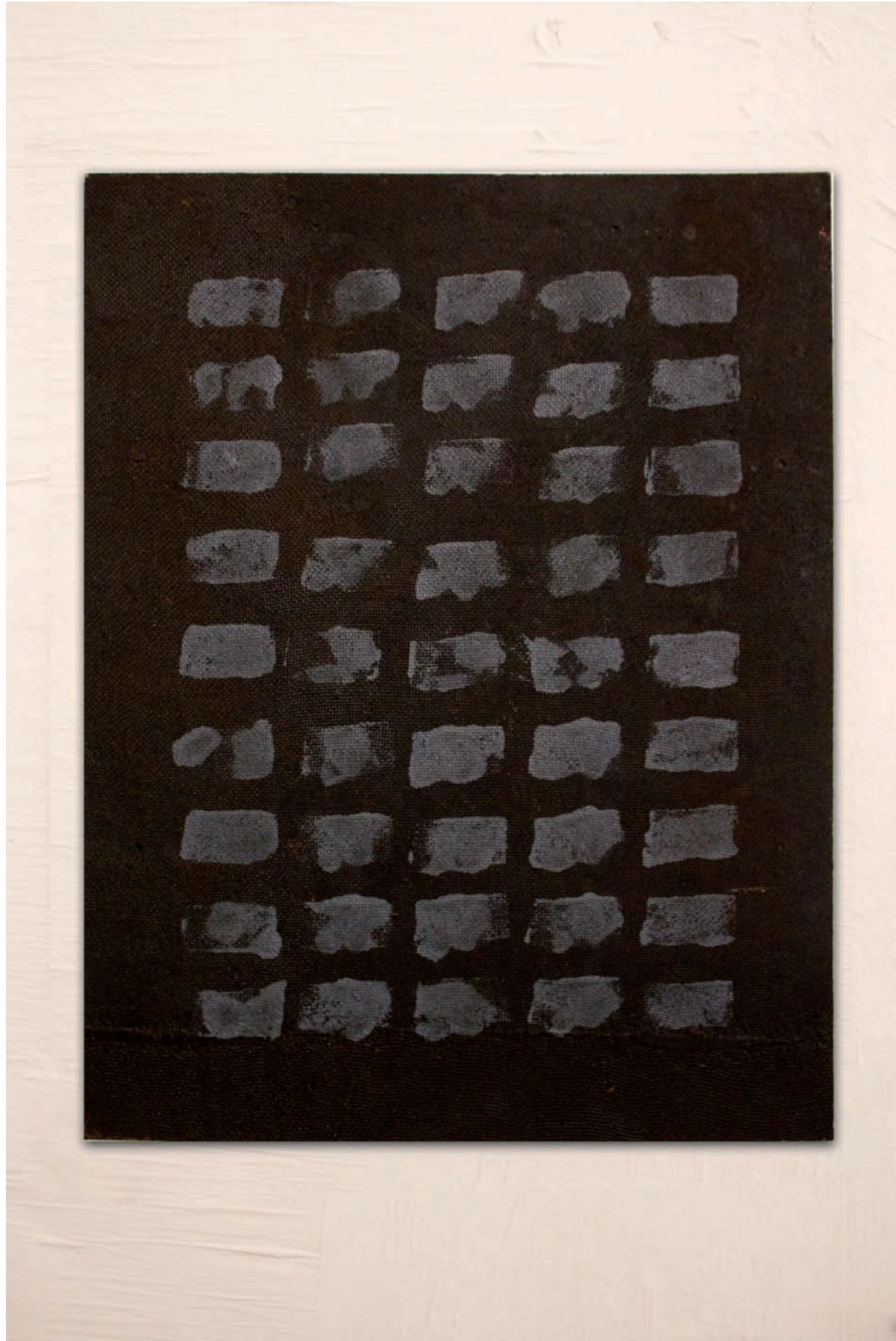
PARKING LOT STUDY N°2

30 x 21 cm / gleaming fabric, acrylic stencils



# PARKING LOT STUDY N°14

42 x 59.4 cm / jute on balsa wood, acrylic stencils





# PARKING LOT STUDY N°16

each 25 x 25 cm / card board, acrylic

