

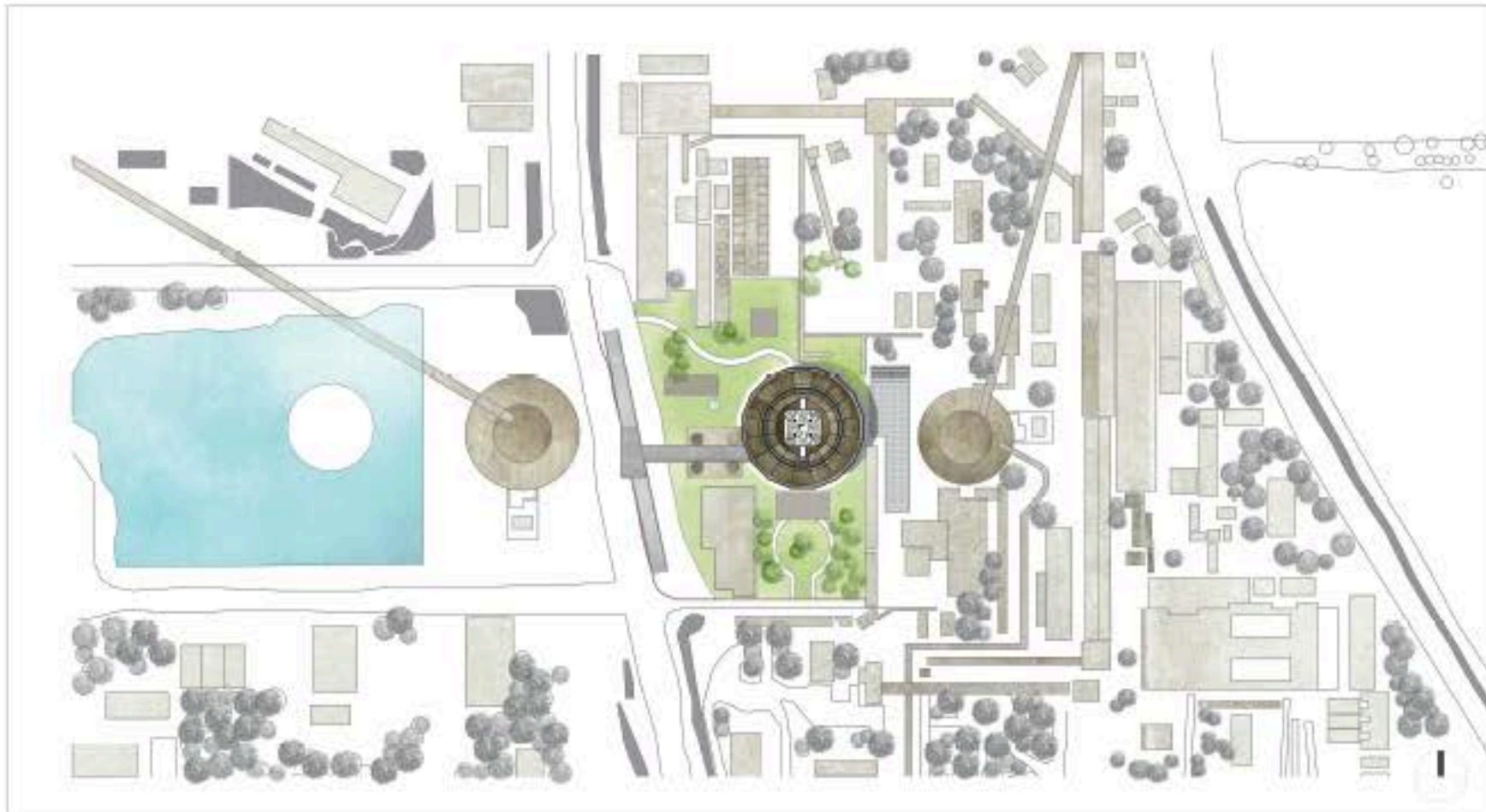


**THINK TANK BEIJING\_**

Aishwarya Chila\_ Hanna Ressel\_

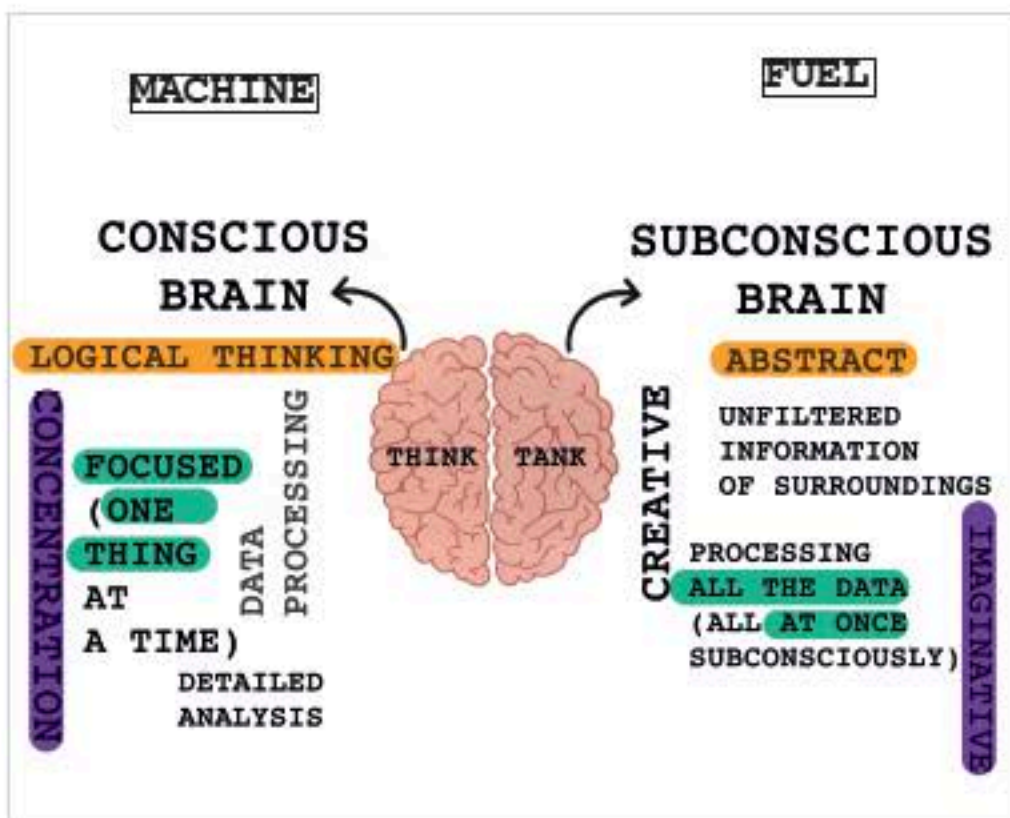
Shougang Park, Beijing\_

# THINK TANK BEIJING

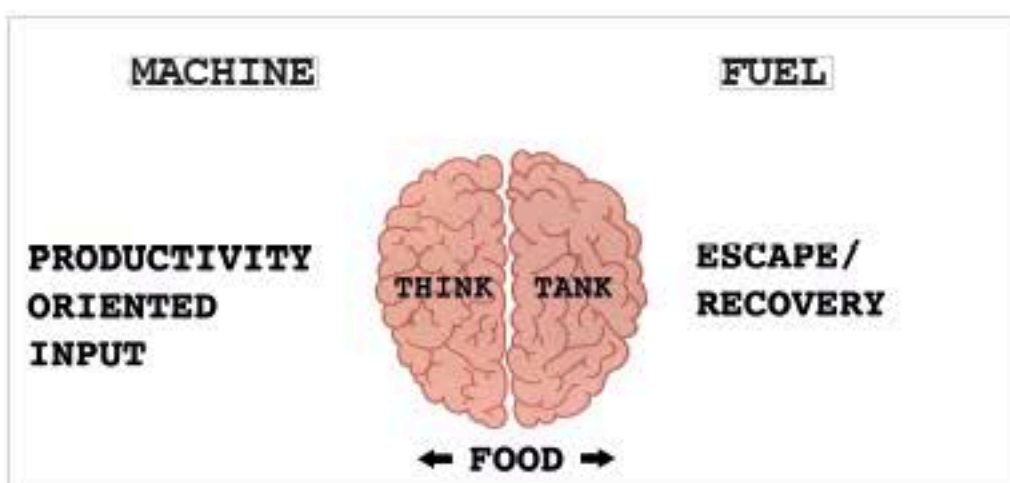


SITE PLAN - 1:1000

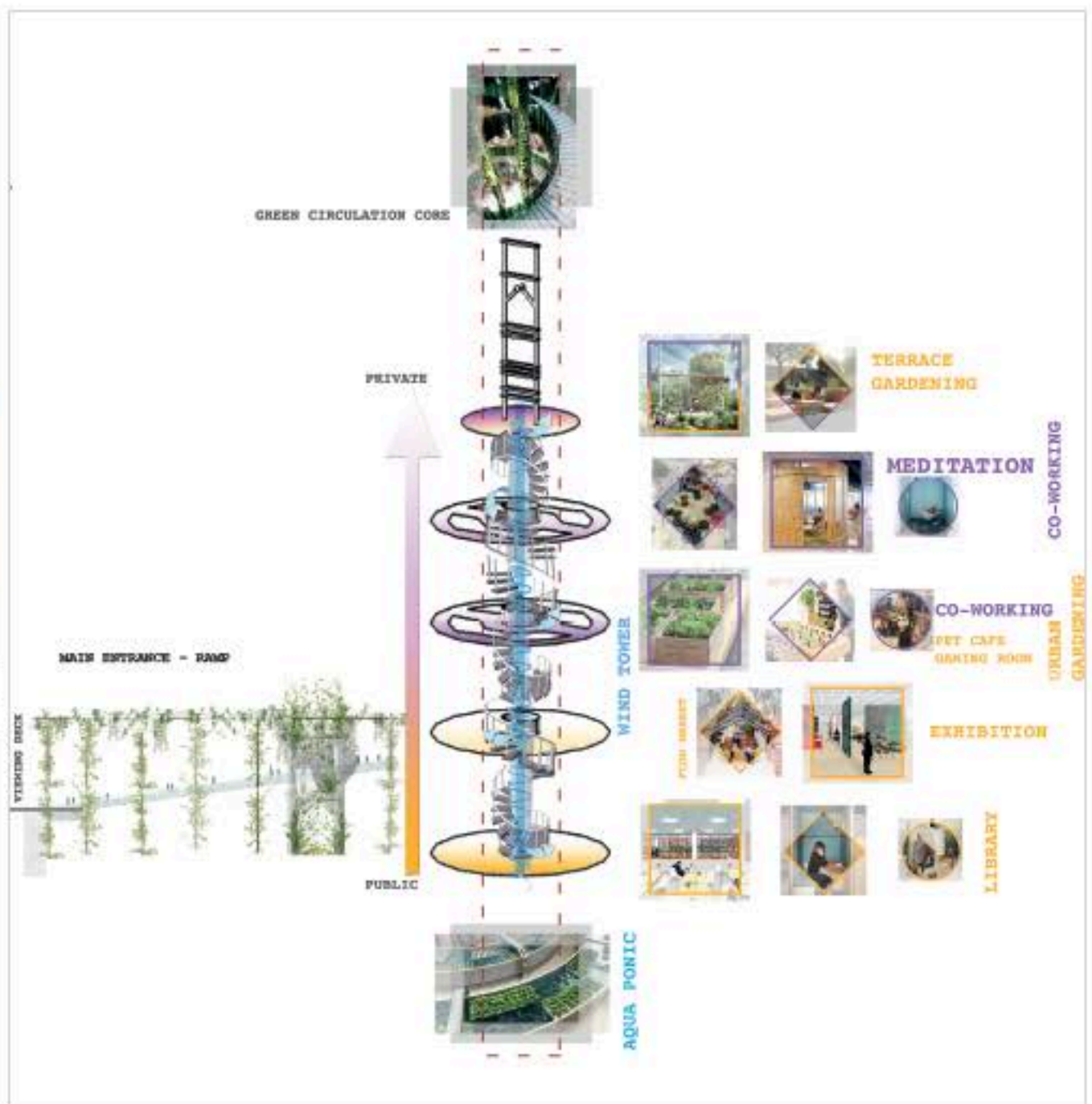
The project aims to revitalize one of the former steel blast furnaces in the Shougang Park area of Beijing, China. The primary intent of the project is to recreate the blast furnace with the help of an innovative Think Tank, containing small rental co-working spaces dedicated to start up companies. Apart from the co-working spaces which form the more private areas, there would also be opportunities for other public areas like library, exhibition galleries and food areas, where individuals from the vicinity also can visit, meet, interact and ponder over ideas with the professionals of the start up companies and think together to be more creative. In order to be more creative while working, the project incorporates some recovery spaces within the productive spaces where one can release their stress. These recovery spaces have been well integrated through all the levels of the blast furnaces in terms of various gaming rooms, pet cafes, meditation rooms, urban gardening, cooking stations and so on.



HUMAN BRAIN AND THE THINK TANK



MAIN FUNCTIONS - THINK TANK



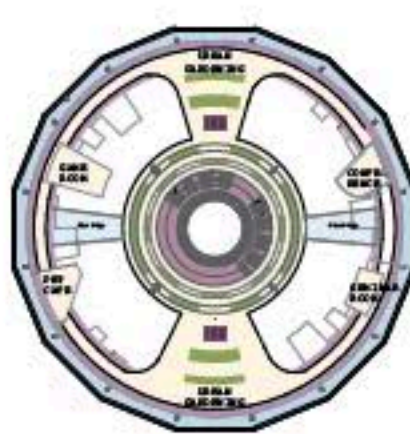
THINK TANK AND PRODUCTIVITY



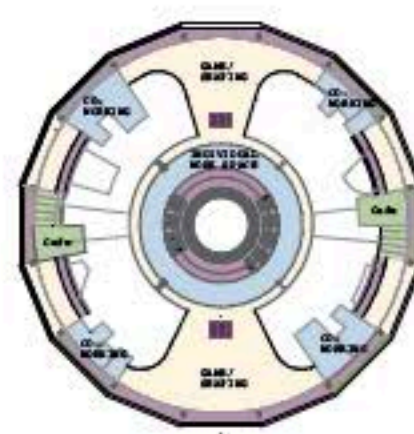
GROUND FLOOR SPACING



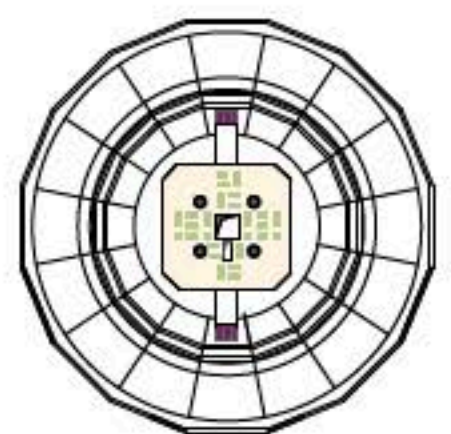
FIRST FLOOR SPACING



SECOND FLOOR SPACING

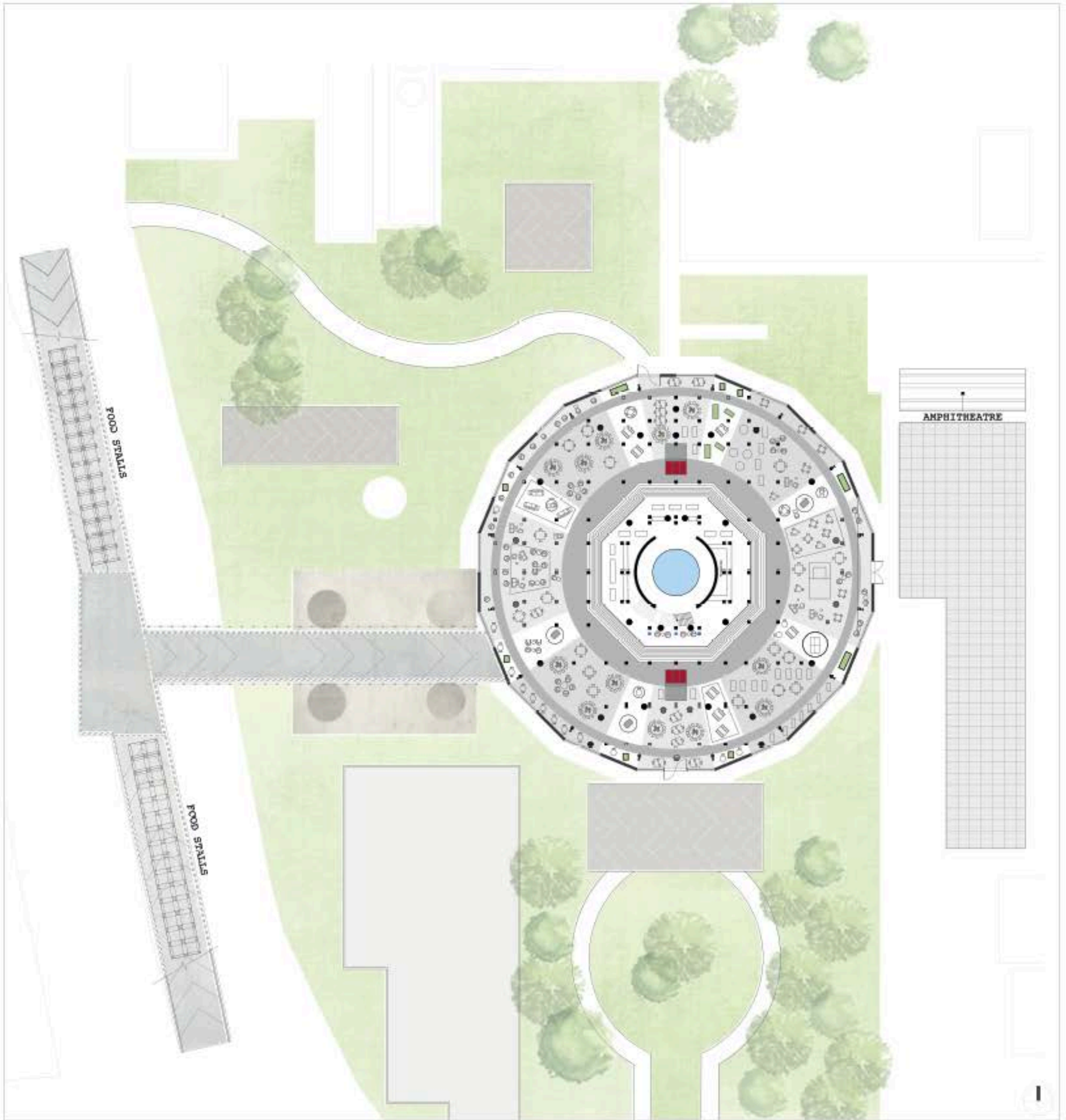


THIRD FLOOR SPACING



ROOFTOP SPACING

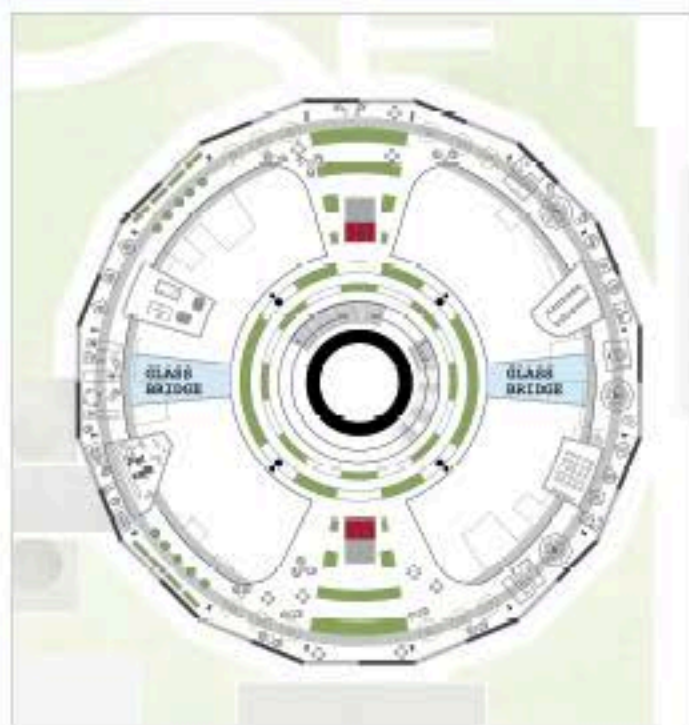
# THINK TANK BEIJING\_



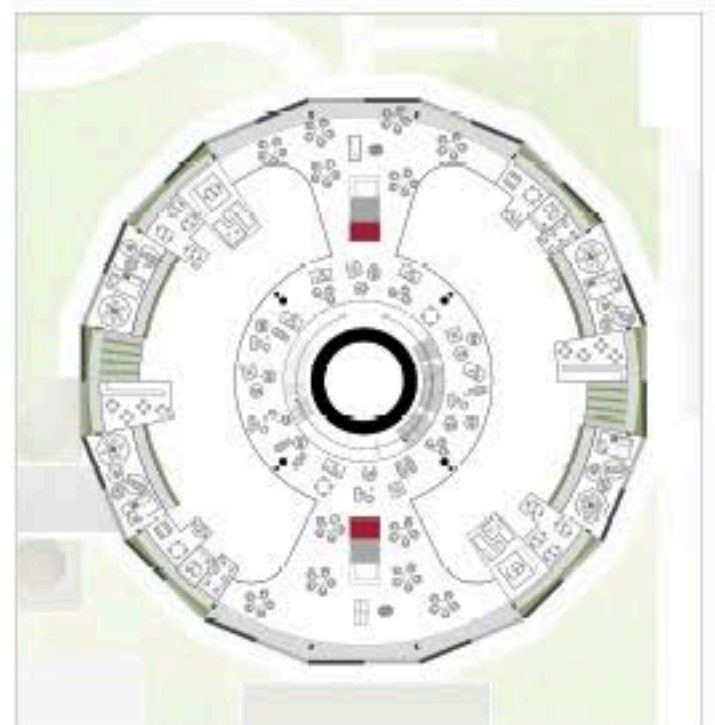
GROUND FLOOR - 1:350



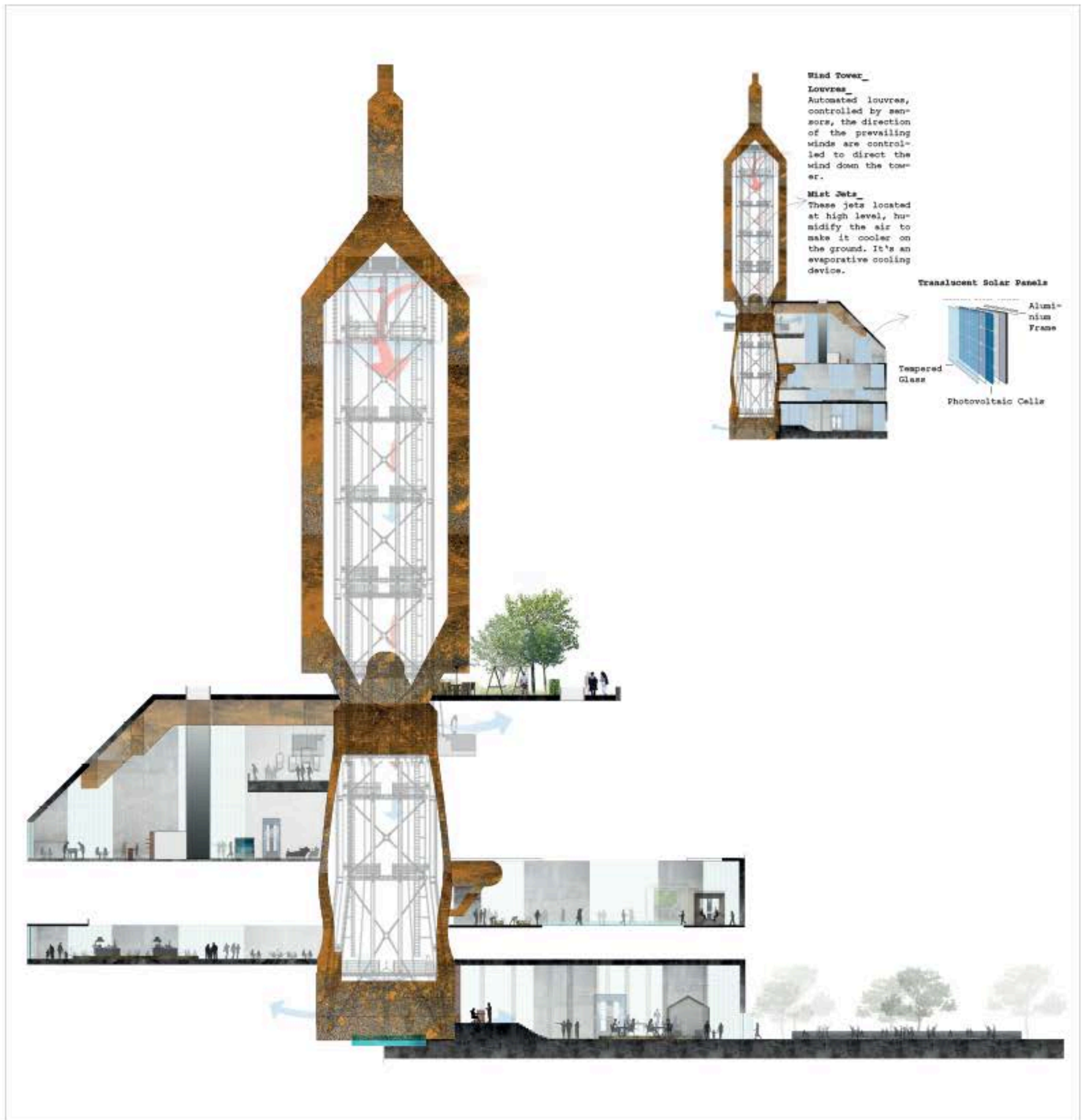
FIRST FLOOR - 1:500



SECOND FLOOR - 1:500



THIRD FLOOR - 1:500



SECTION - 1:100



THIRD FLOOR



FIRST FLOOR