

FUTURE

The design idea of the FUTURE originates from observations of the Chinese society, surrounding area and a attempt to follow the line of time into the (bright) future.

What is time but a spiral of interdependent events, each turn of which repeats an event on different levels? This year the history of Shougang made its spiral turn. For almost 100 years it was processing iron, smelting, water, air to produce one of the most important building materials in the world. The glorious part of the enterprise was unfortunately regardless of the consequences in environment. The factories of Shougang were closed exactly because of the threat of the climate breakdown in 2020. They have perfectly showed the state of the environment - full of CO₂, droughts and extreme temperatures. This is the cost of our rapid technological development in the 20th century. But today, instead of taking away from nature, it is willing to give back.

The main idea of the revitalization of the Blast Furnace No 1 was born as the synthesis of two main axes which go through it. The planned green axis with the industrial heritage park on it gave an impulse for creating a structured public green space, an urban oasis which meets the needs of diverse social groups, creates clean environment for communication, interaction and privacy. The old railroads, transversing the green axis, are used to create a pathway to the Blast Furnace (exhibition) and through it to the park inside of it. The second function is derived from the already renovated Blast Furnace No 3 - a monument of the history of the area and the second industrial revolution. FUTURE corresponds to it and builds on this tradition to the past its own manifesto for the future. The exhibition of FUTURE respectively represents the possibilities of the future, gives people a chance to experience the impact of the 4th industrial revolution on the environment, on their lives: it educates in order to act.

In the spatial terms, the functions are distributed in the following way: due to the emphasized meaning of nature, the inside park volume is qualitatively prevailing over the exhibition space. According to its concept the first part of the exhibition is placed in the existing ground floor to provide necessary distances. This part of the exhibition states facts and provides questions about the world we live in. The rest one is the transitional zone which leads to the spiral volume on the first floor. The spiral itself should represent the "light" part of the exhibition, showing alternative methods of solving global problems. The form of the spiral is a product of long term design process. The house in its architectural appearance appears to be an algorithm as a solving tool. While its gradual ascent to the top is a metaphor for achieving the main aim - the last staircases in the spiral leads to the park at the top of it. The nature is this aim.

The park is designed considering the division of space in traditional south Chinese typologies. This type was more suitable for a public building than the imperial southern one. The space of the park is polarly divided into public and private areas with a transitional zone in-between. The design concept of vegetation used in the park reflects the private-public principles: the plants are low and rare in public areas, getting higher and denser in the private zone. It provides acoustical and visual separation of zones.

Visual axes are another defining features for the design of the park. The analysis of the surrounding territory helped to distinguish the main visual attraction points and divide them into two main categories: natural landscape and industrial landscape. The south part of the building which unfortunately do not provide any special view is thought to be an "introspective" part of the park, having the labyrinth and the linden forest in it.

The spiral volume is interpreted as a mountain. The top of it is covered with greenery and has a long curved path which provides the "changing view" principle with the water element running beside the path for additional orientation. To get the needed amount of light for plants inside the decision was made to replace the metal roof with transparent solar panels.

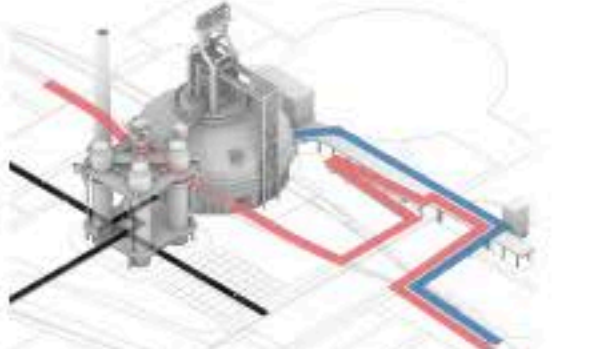
There are few ways to get to the park. Either a visitor follows the railroads and come up to the park through the tunnel on the ground floor or he/she uses the existing ramp, which starts on the opposite side of the southern street. The entrance to the exhibition is situated on the south side of the building. Its exit is attached to the park, which connects different pathways and platforms of the blast furnace between each other giving the possibility to get to the top of it for a view.

Placement of nature on top of the technology was deliberate action. The occupation of it is using the Artificial to sustain the Natural. Here technology plays the role of a medium between man and nature which can positively contribute the last one. Nevertheless the spiral side and a visitor really comes into direct dialogue with the nature, realizing his/her own responsibility and dependence on it.

In the perfect scenario FUTURE will give an impulse to move in the direction of sustainable future. Once the goal is achieved the Blast Furnace can be unveiled from its glass facade revealing the real power of nature being cared with people.



// description showing the relation of the blast furnace to the two axes



// section



// exhibition path



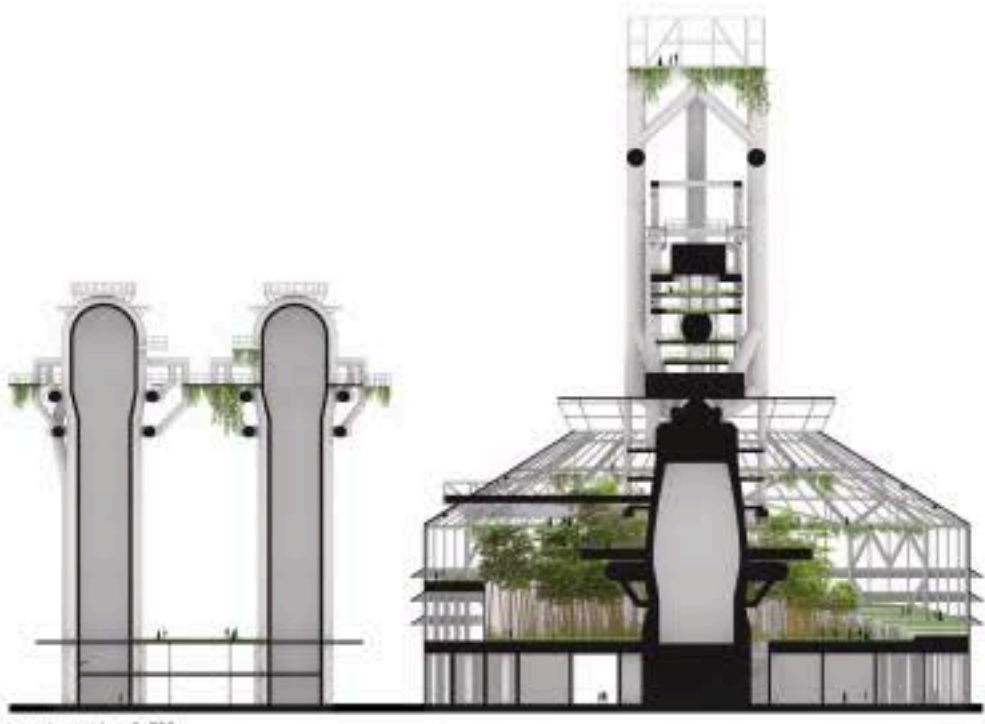
// park path



// development of the spiral form



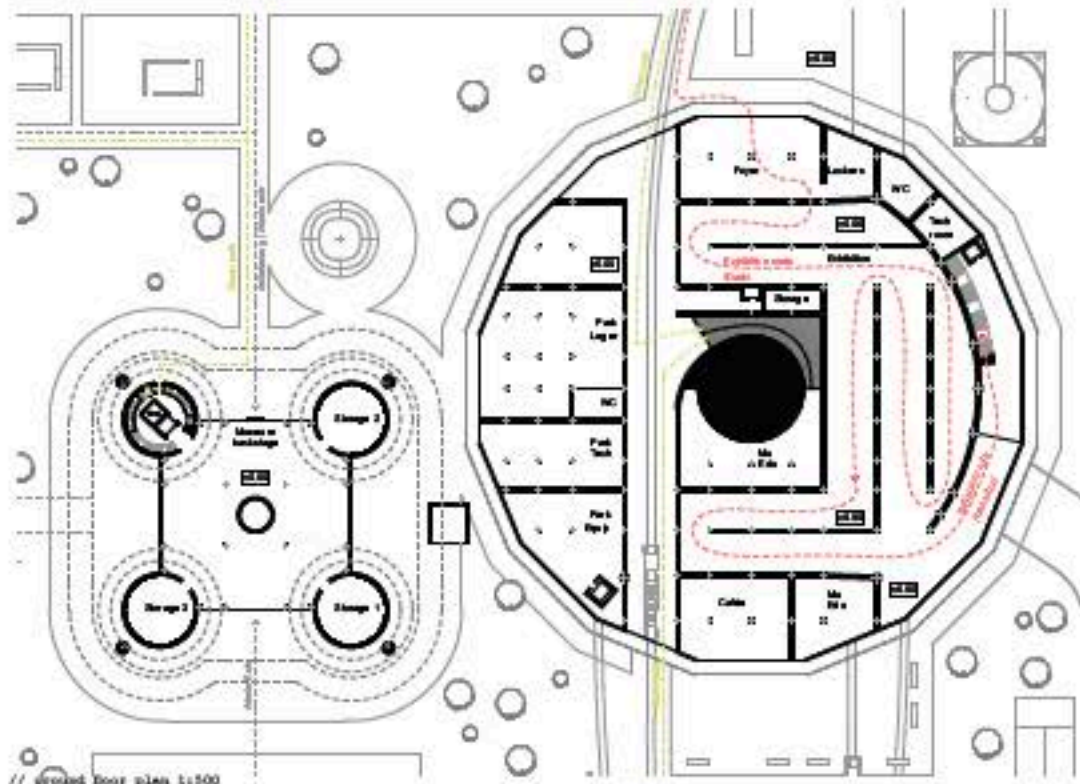
// urban anatomy of the blast furnace, its surrounding industrial value + low public spaces



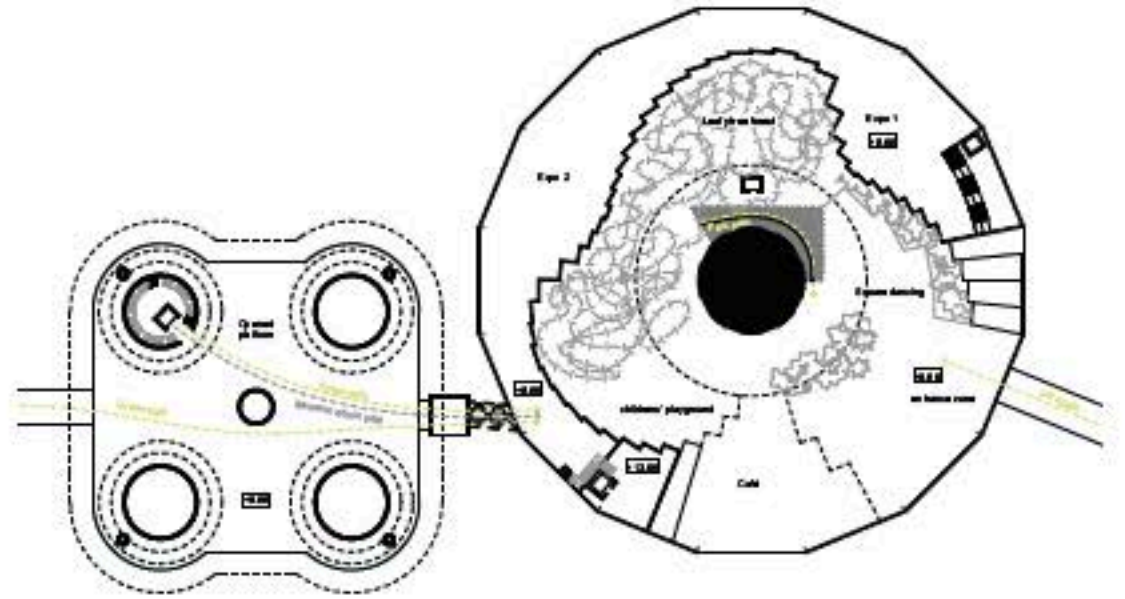
// east-west section 1:500



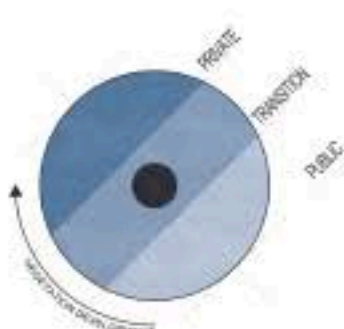
// north-south section 1:500



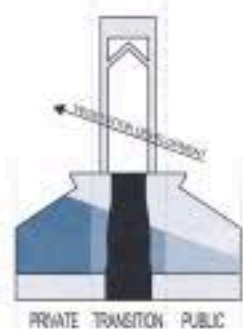
// ground floor plan 1:500



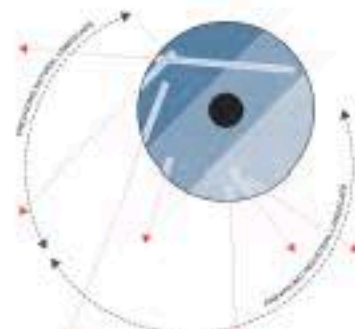
// first floor plan 1:500



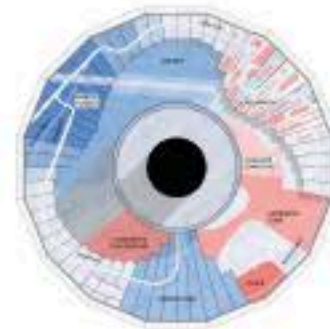
// vegetation development



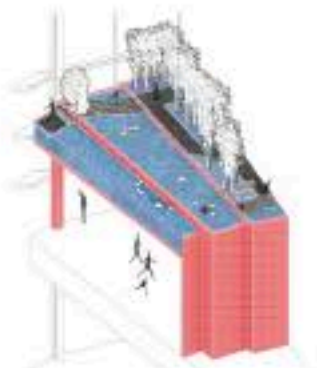
PRIVATE TRANSITION PUBLIC



// visual axes



// park zoning



// detail of the spiral



// the bridge spanning over the road, integrating the park to the inside



// the exhibition inside the spiral



// the park as viewed from the spiral



// first floor view of the inside park