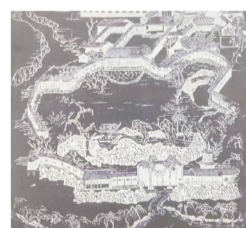


册子里的园林 GARDEN IN BOOKLETS Part 1

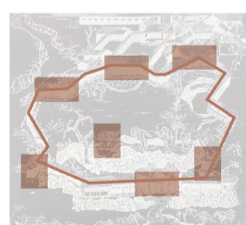


园林建筑通过对空间分隔与联系关系的处理来达到目的。流观、散点透视所造成的空间的流动感,就是常说的步移景异。这也是体现建筑时空观的重要环节。步移景异,使人沉浸在奇妙的景色变换之中而忘记时间,似乎时间已停止,亦或通过景物所体现的意境使人回忆过去,似乎时间在倒流。

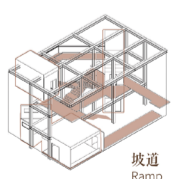
Garden architecture achieves its goal by dealing with spatial separation and connection. The sense of fluidity caused by the flow and scatter perspectives is often said to be different. This is also an important part of the concept of building time and space. Stepping into the landscape, immersing people in the transformation of the wonderful scenery and forgetting the time, it seems that time has stopped, or through the artistic conception embodied in the scene to make people recall the past, it seems that time is going backwards.



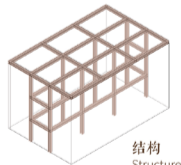
《沧浪亭图》



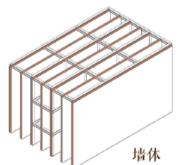
The corridor



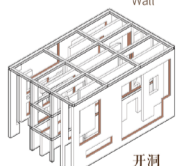
Ramp



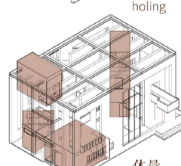
Structure



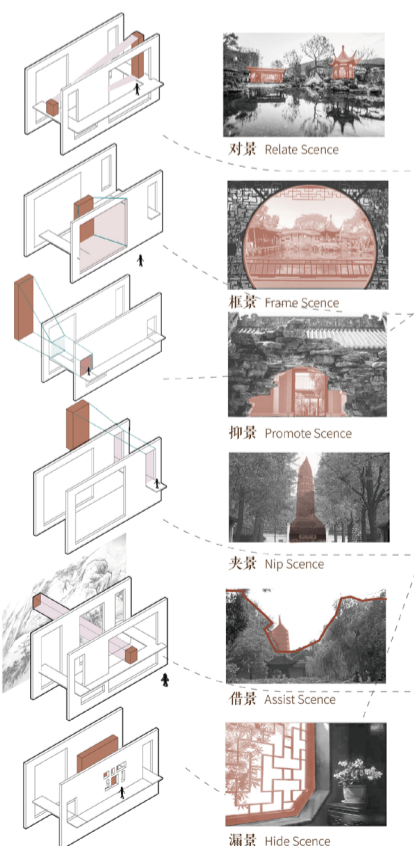
Wall



Hole



Volume



对景 Relate Scene



框景 Frame Scene



抑景 Promote Scene



夹景 Nip Scene

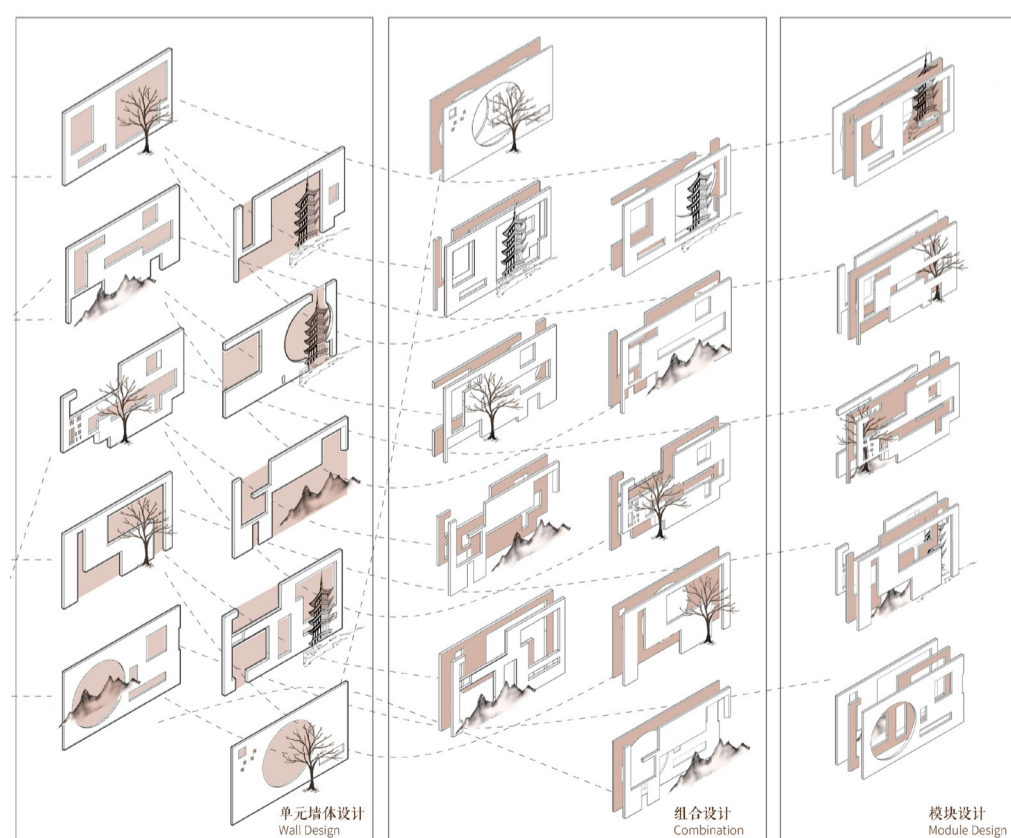


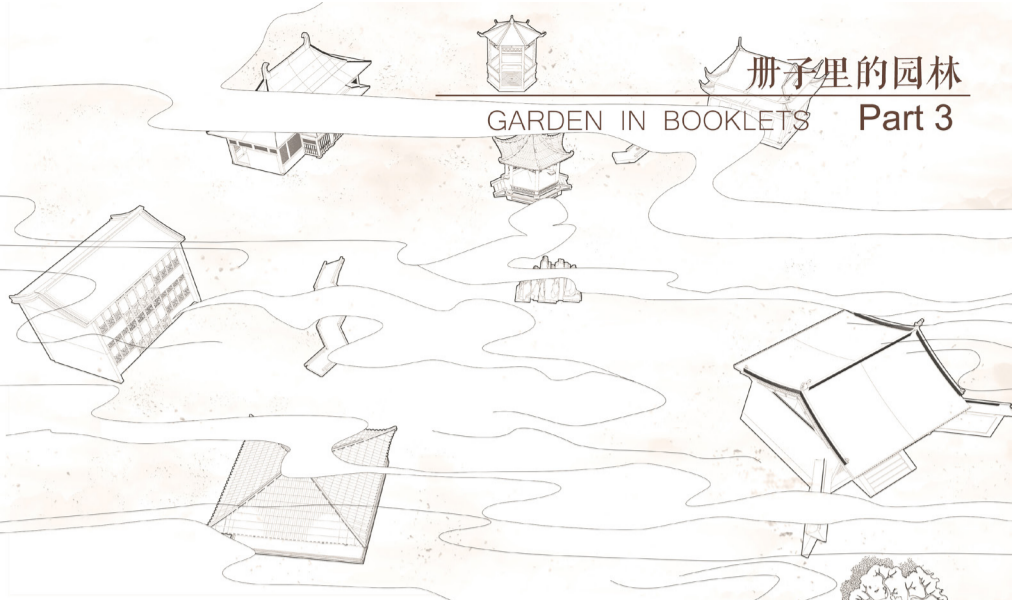
借景 Assist Scene



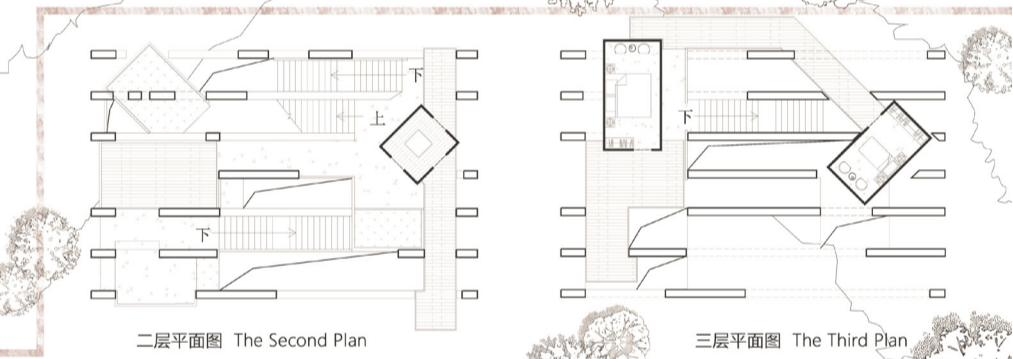
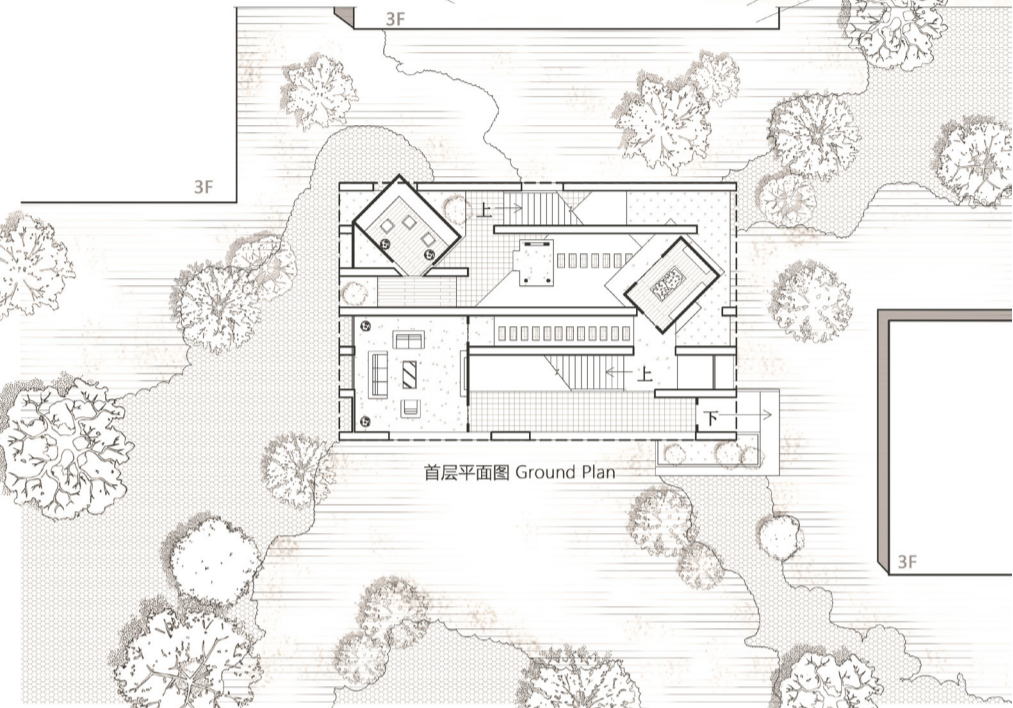
漏景 Hide Scene

册子里的园林

GARDEN IN BOOKLETS **Part 2**



册子里的园林
GARDEN IN BOOKLETS Part 3



以造景手法为主要的建筑设计出发点，通过对体量进行层状划分，延长流线，对墙体的开洞进行设计，实现园林中的“对景”、“借景”、“框景”等空间设计手法。
Taking the landscaping technique as the main starting point of architectural design, by layering the volume, extending the streamline, designing the holling of the wall, in this way to realize the space design techniques such as "viewing", "borrowing" and "frame" in the garden.

